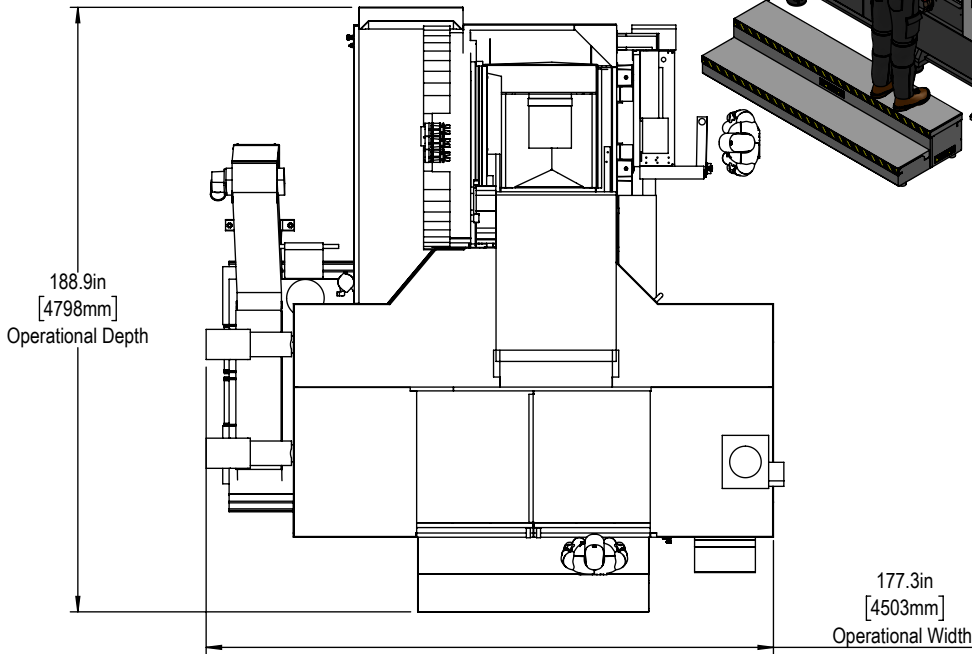
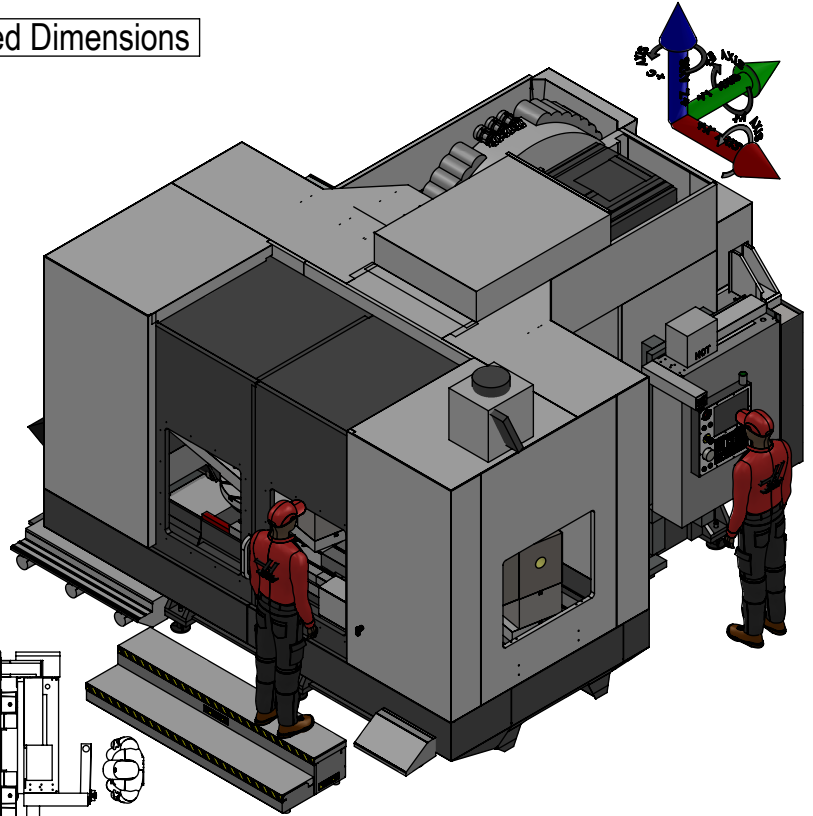
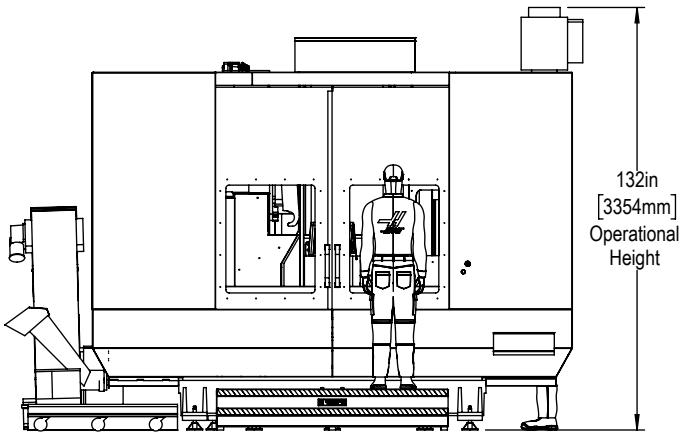
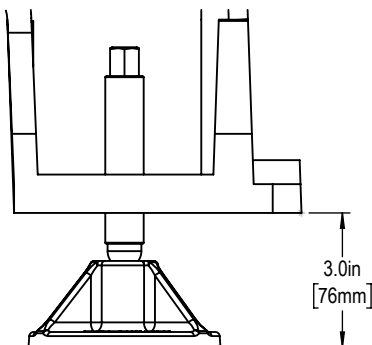




Installed Dimensions

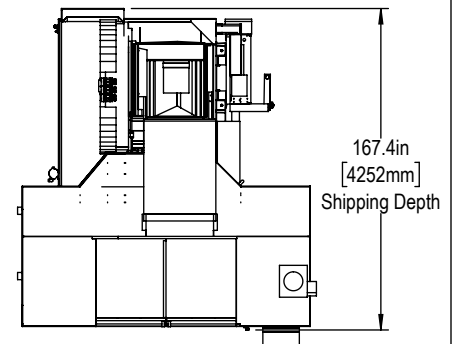
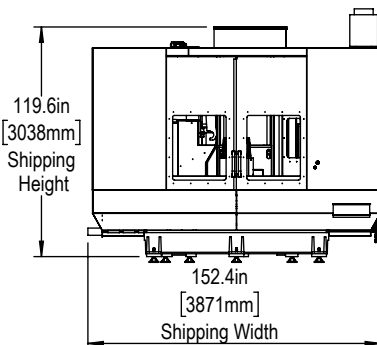


Leveling Pad Height



Shipping Dimensions

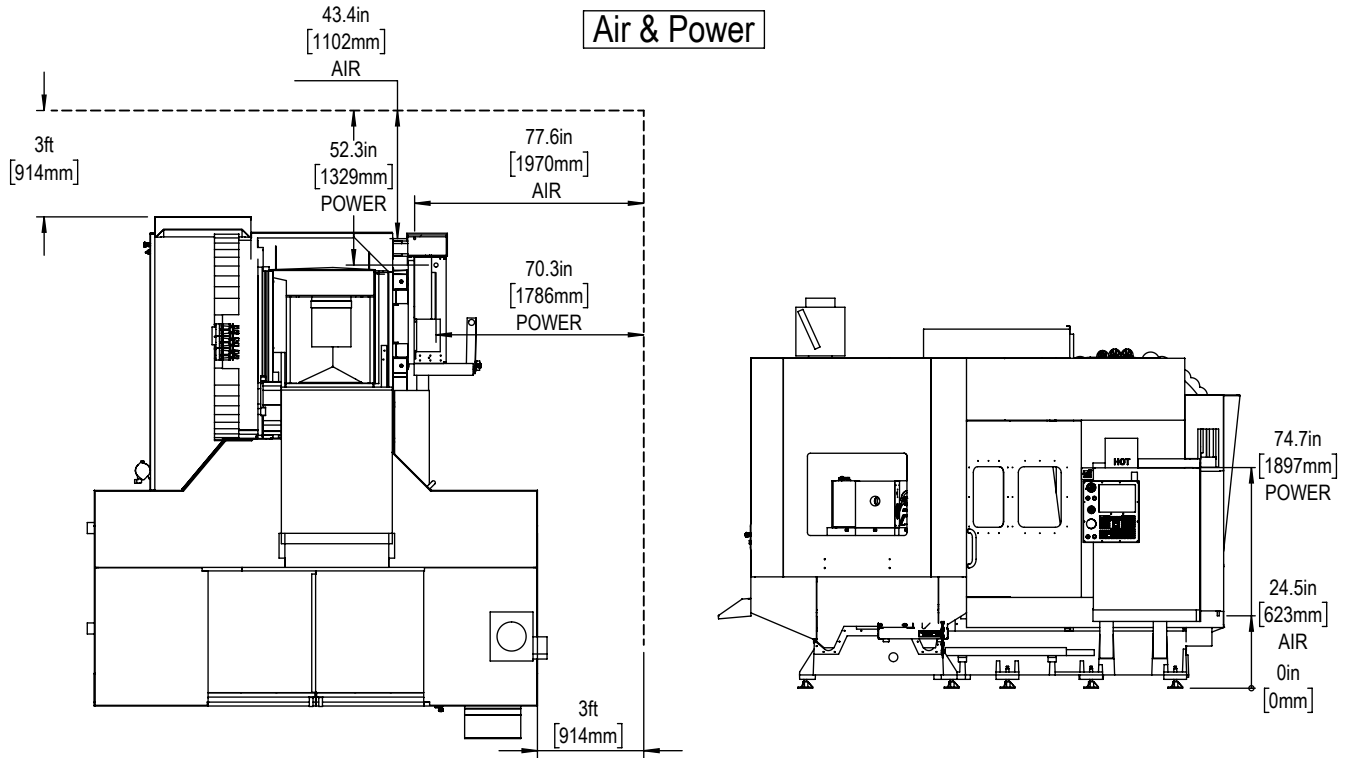
Shipping Height w/SMTC70: 126" (3200mm)



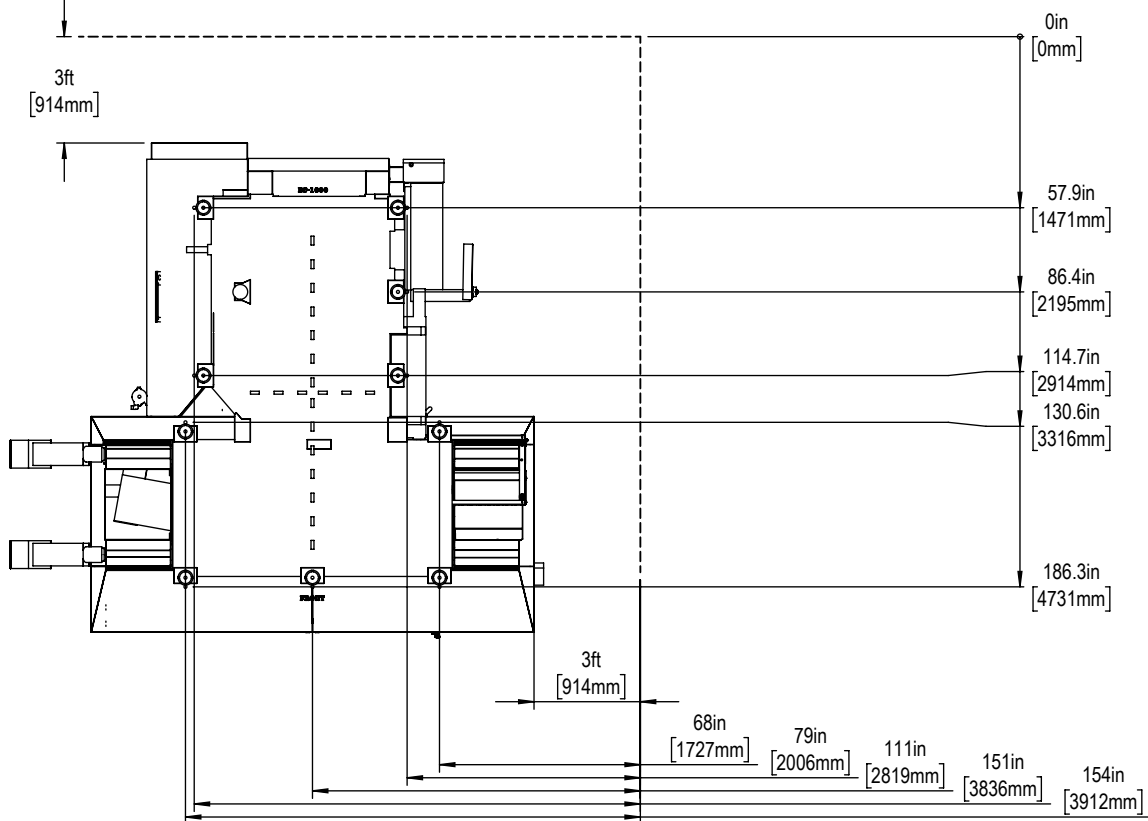
Shipping Depth w/SMTC70: 193" (4902mm)

*All Height Dimensions Based on Suggested Leveling Pad Height

Air & Power



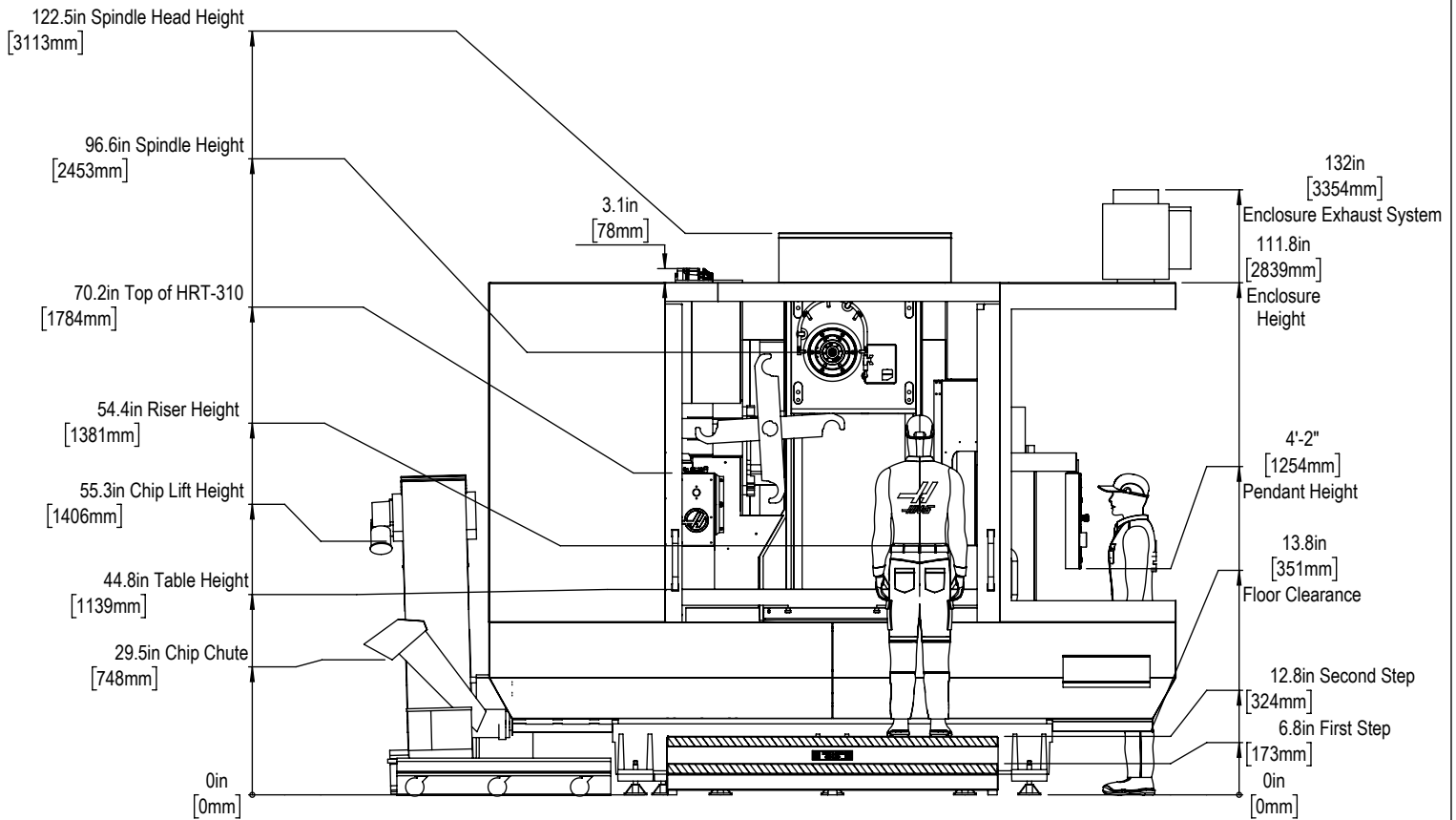
Anchor Pattern



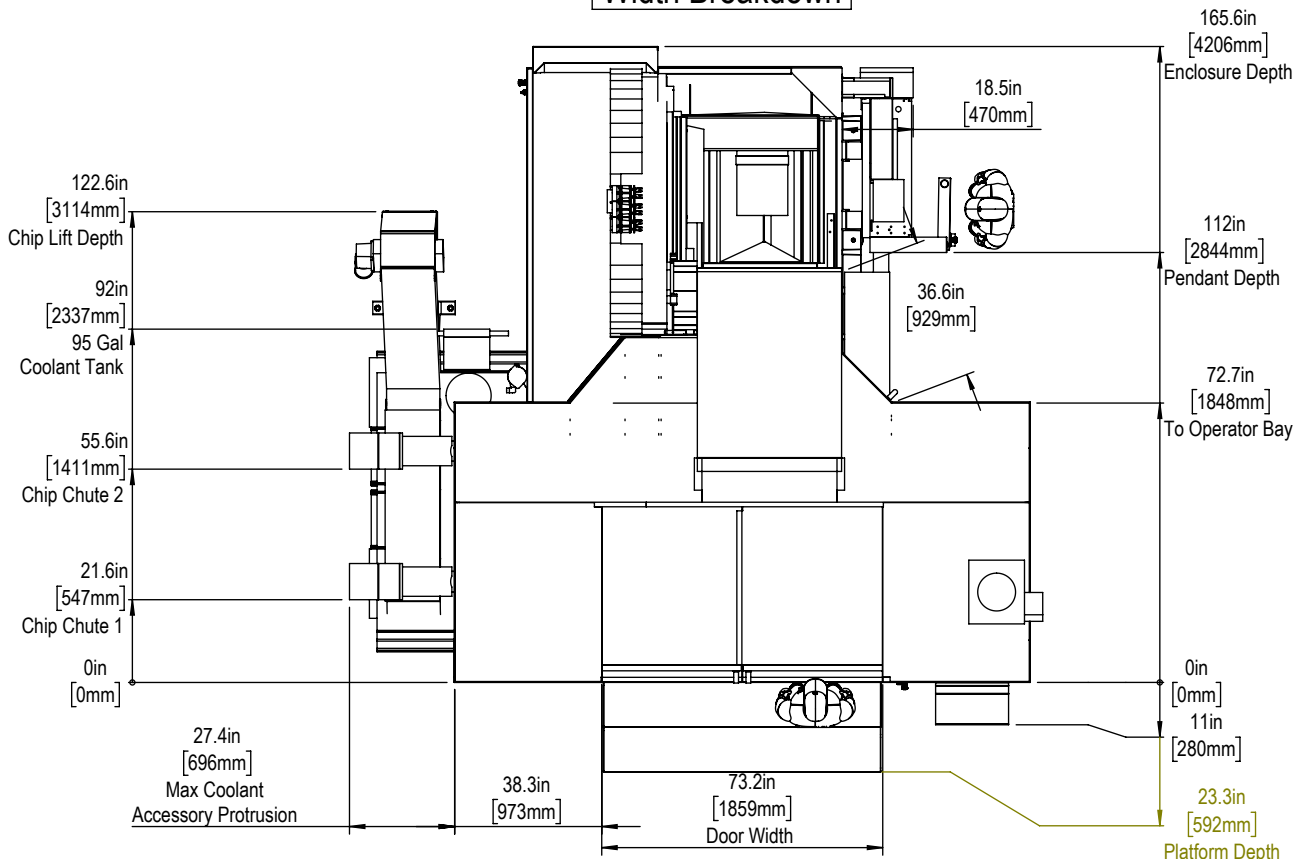
For precise locations please use template in Anchoring Kit found at Haascnc.com



Height Breakdown

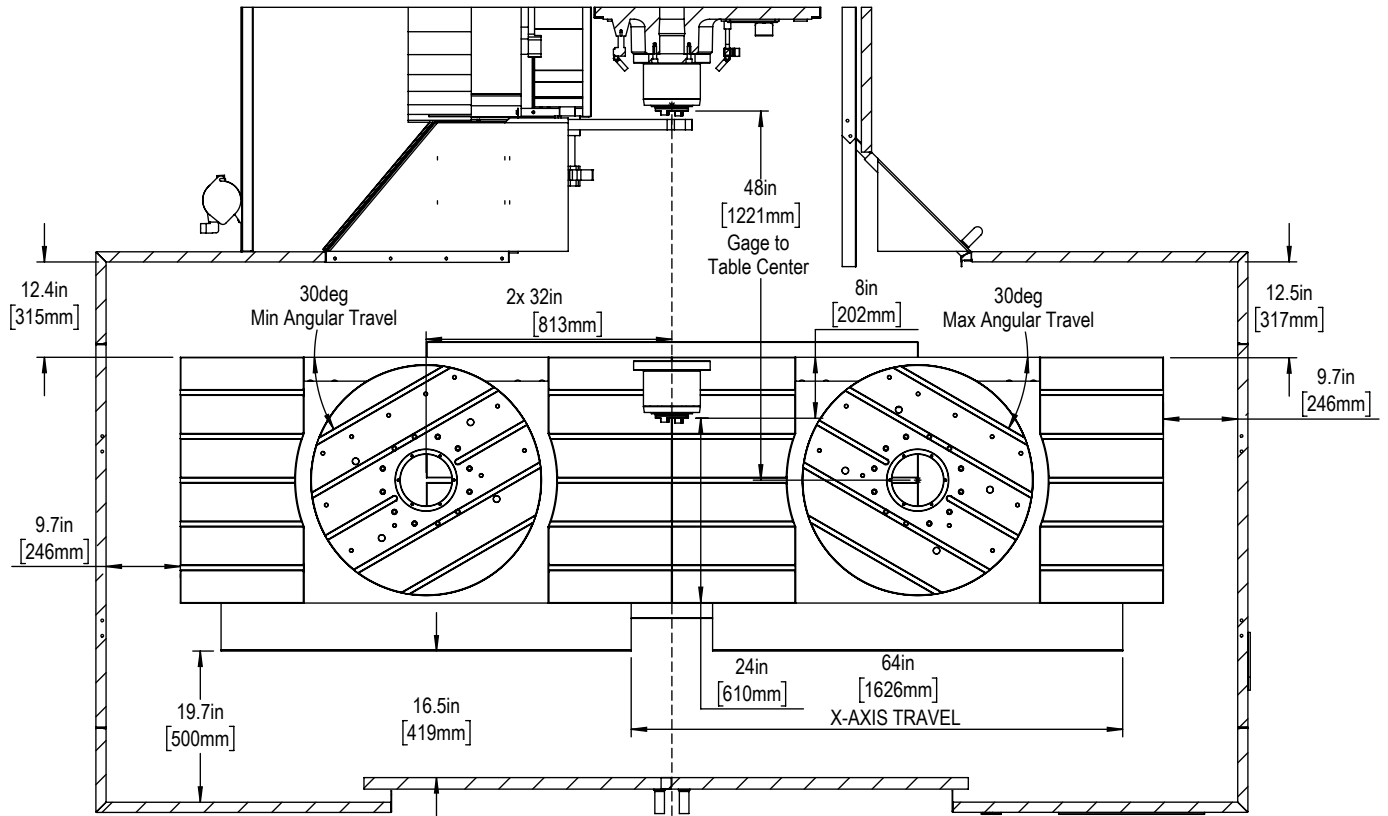


Width Breakdown

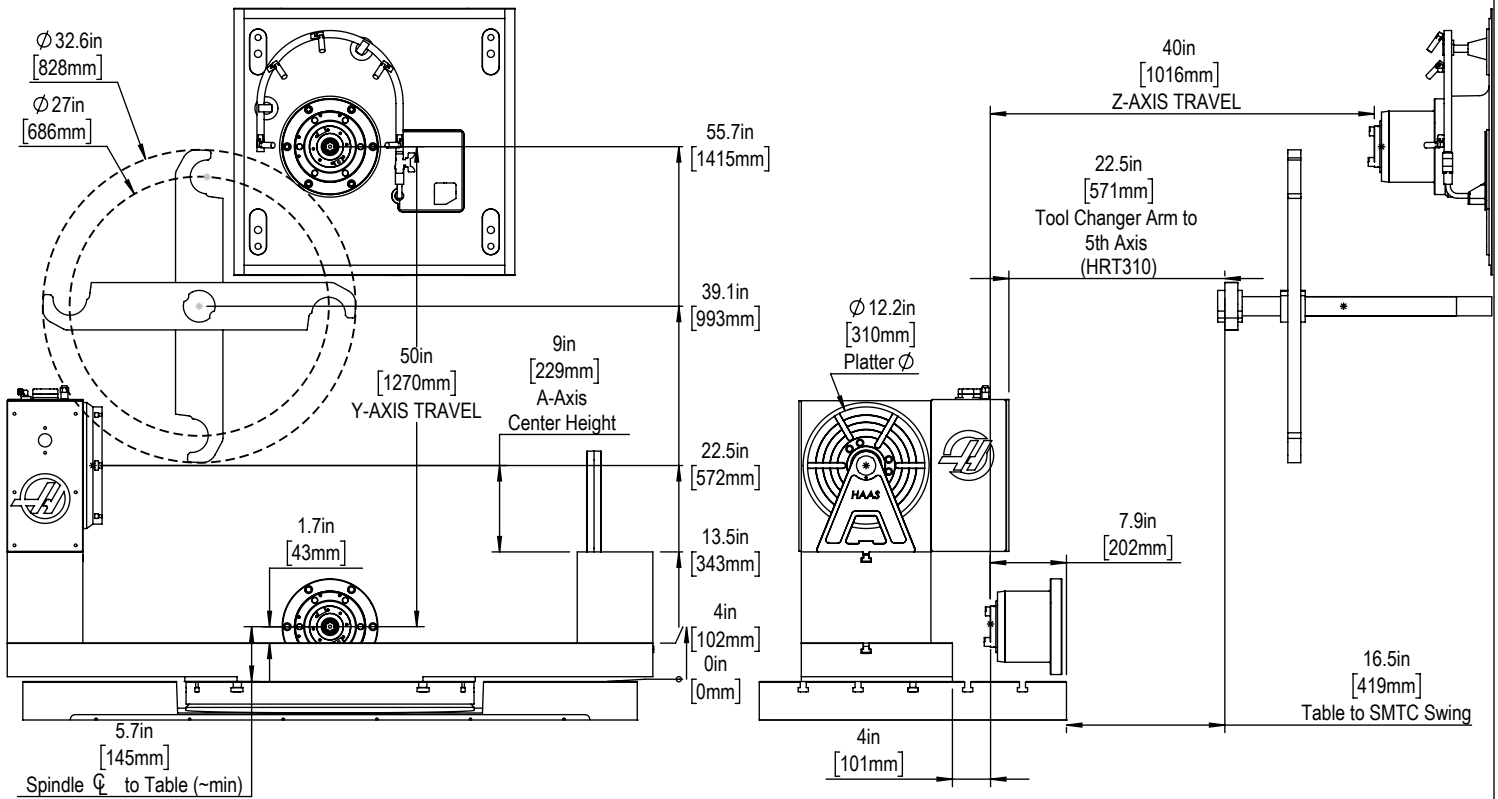


Maintain 3 feet [915mm] clearance to the nearest obstruction around all sides of machine perimeter for maintenance access

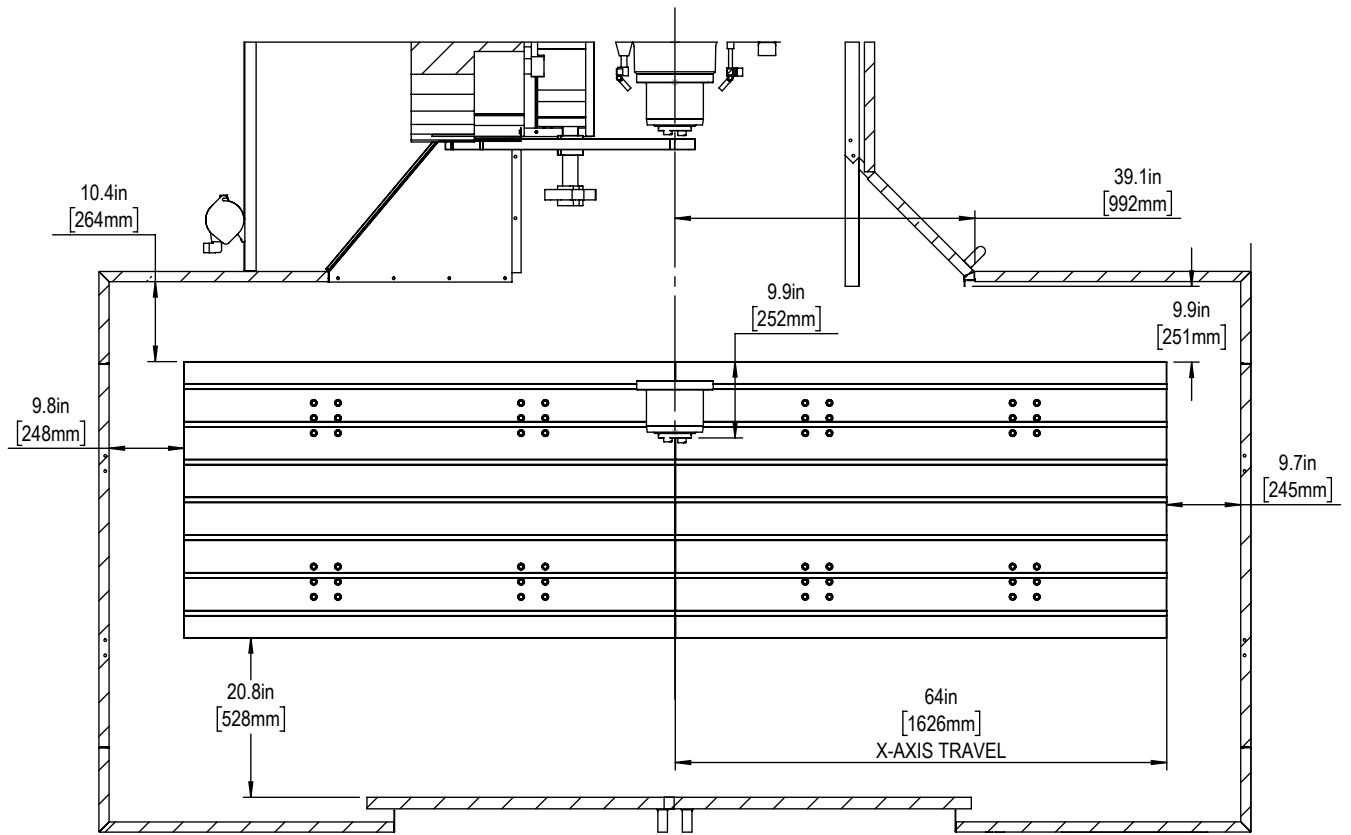
X&Z-Axis Travel



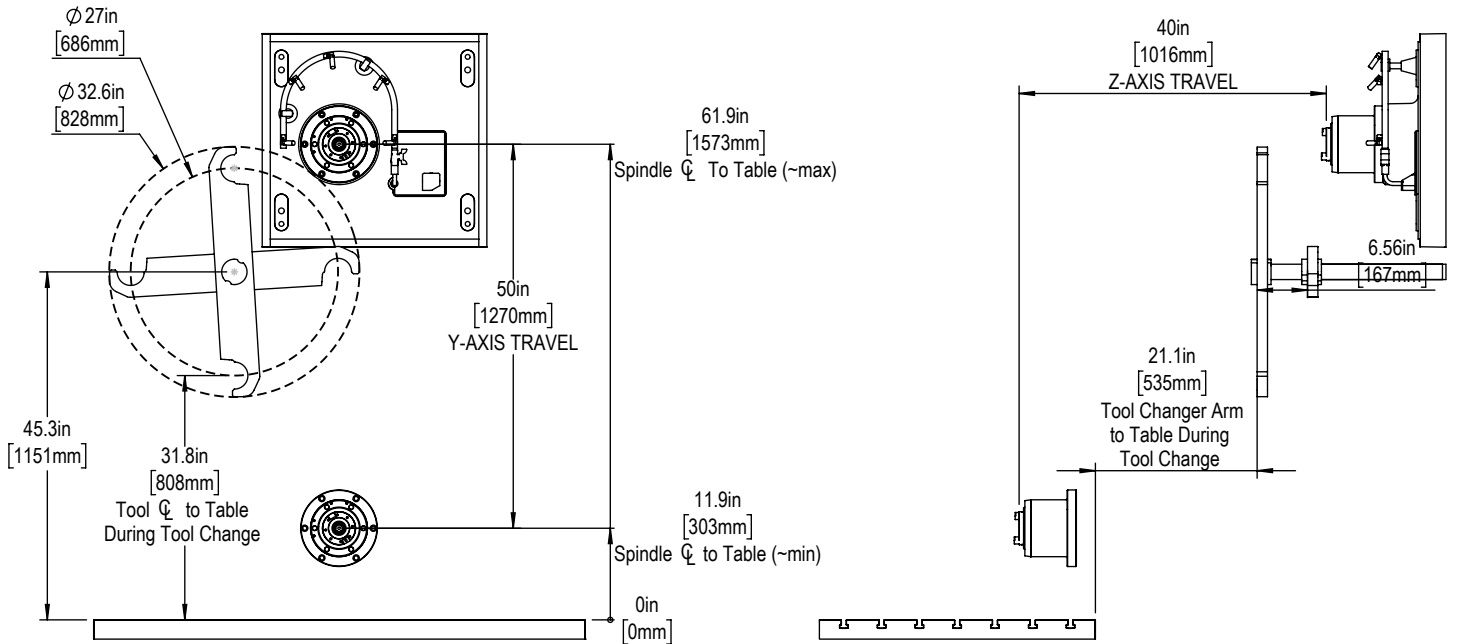
Y-Axis Travel



X&Z-Axis Travel

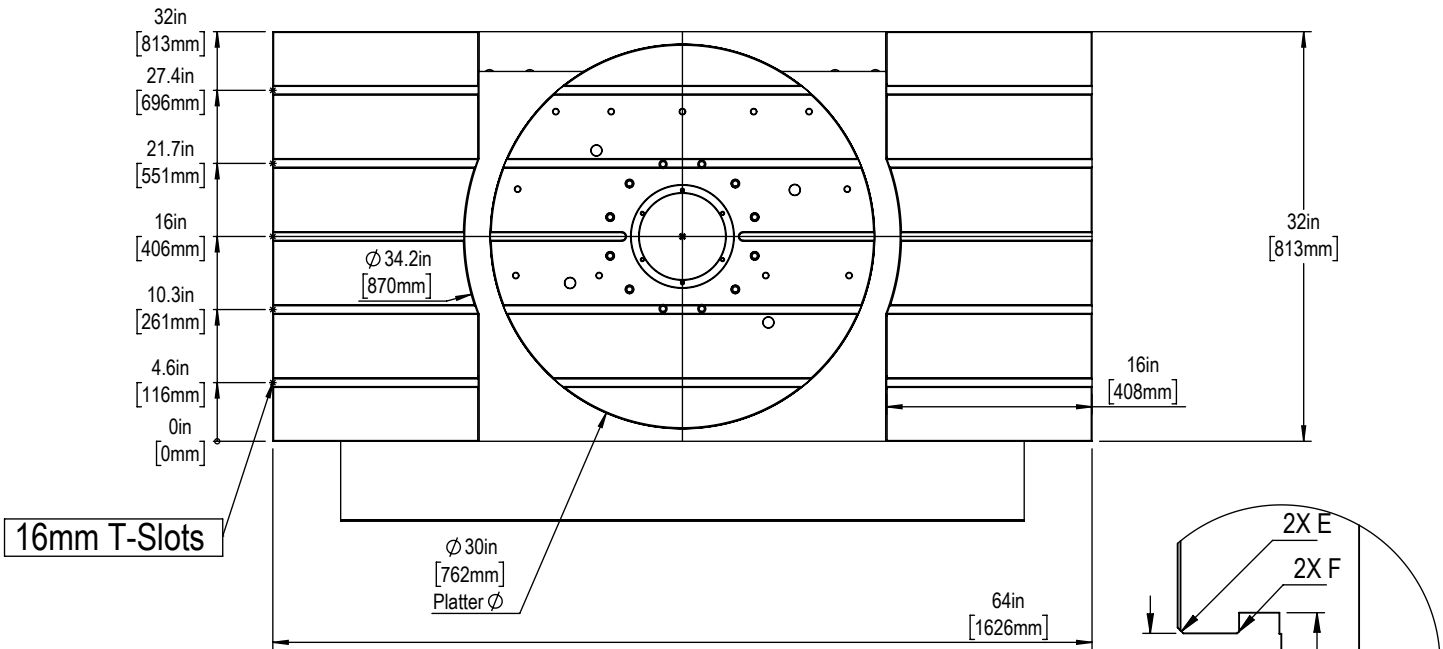


Y-Axis Travel

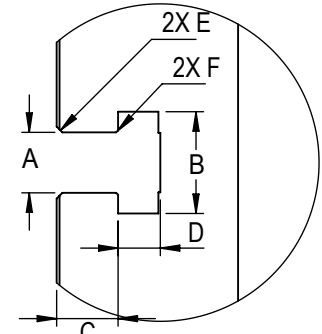




Table

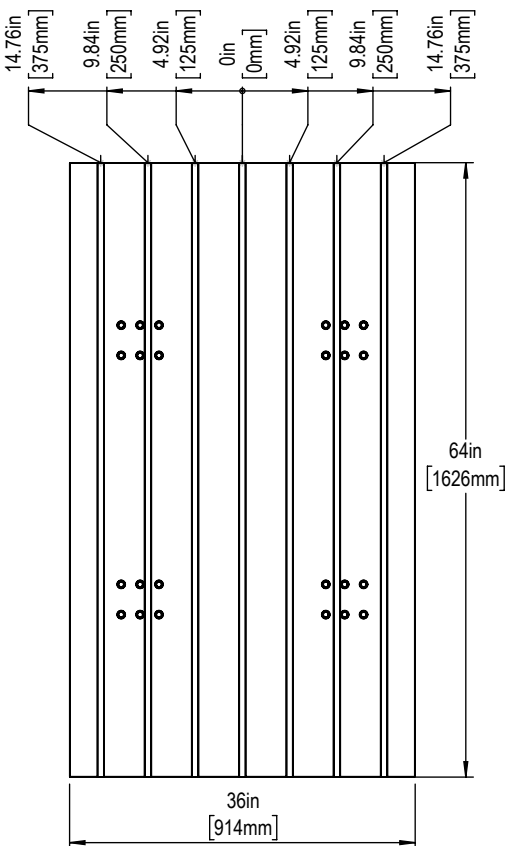


Slot Size	A	B	C	D	E	F
12mm	$0.438 \begin{smallmatrix} +.002 \\ -.000 \end{smallmatrix}$	0.76 ± 0.02	0.310 ± 0.010	0.318 ± 0.010	$0.03 \times 45^\circ$	$0.020 \times 45^\circ$
16mm	0.628 ± 0.002	1.06 ± 0.02	0.640 ± 0.010	0.420 ± 0.010	$0.06 \times 45^\circ$	$0.020 \times 45^\circ$



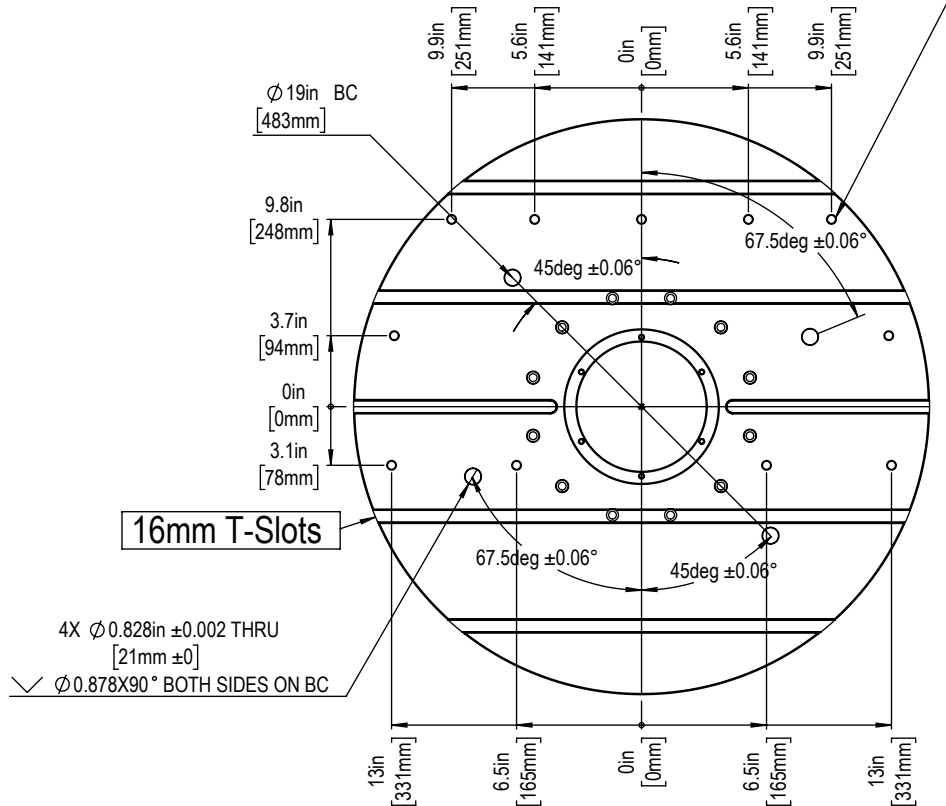
T-Slot Dimensions in inches

Standard no 4th Axis Table



4th Axis Platter

11X 1/2-13 UNC-2B ∇ 1.000



16mm T-Slots

4X $\phi 0.828in \pm 0.002$ THRU
[21mm ± 0]
 $\checkmark \phi 0.878 \times 90^\circ$ BOTH SIDES ON BC