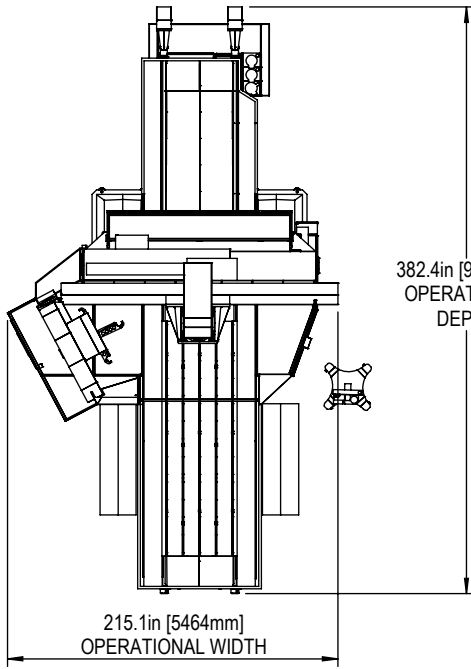
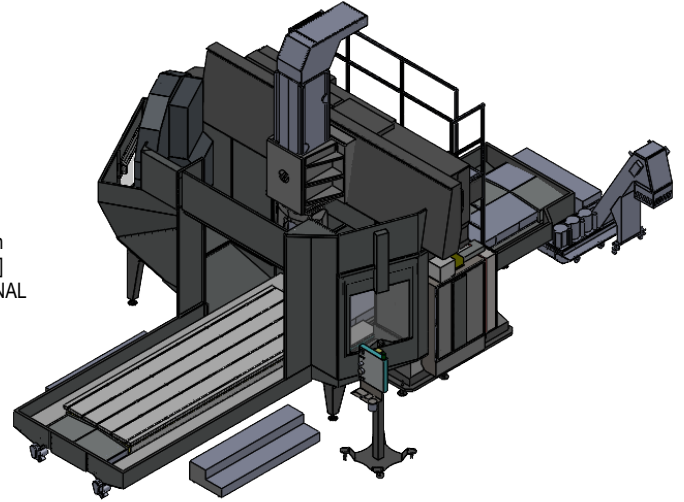
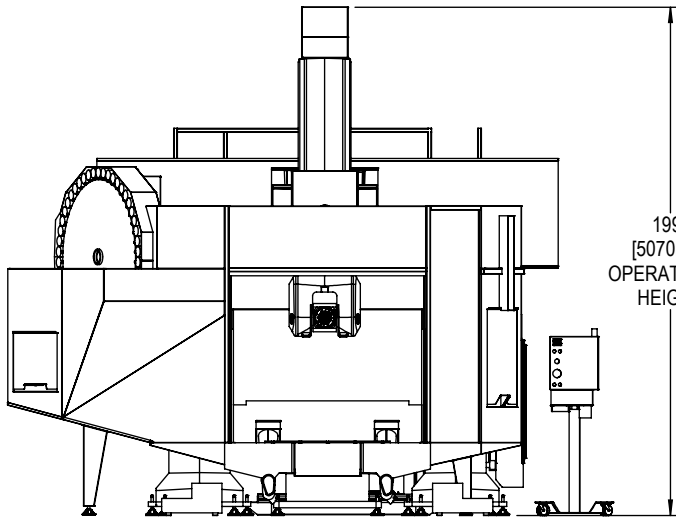
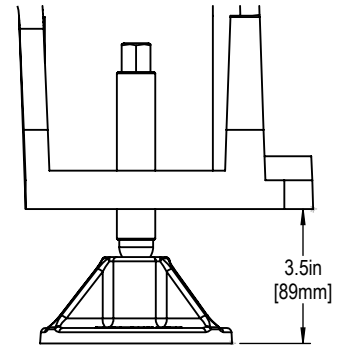




Installed Dimensions



Leveling Pad Height



*All Height Dimensions Based on Suggested Leveling Pad Height

Shipping Dimensions

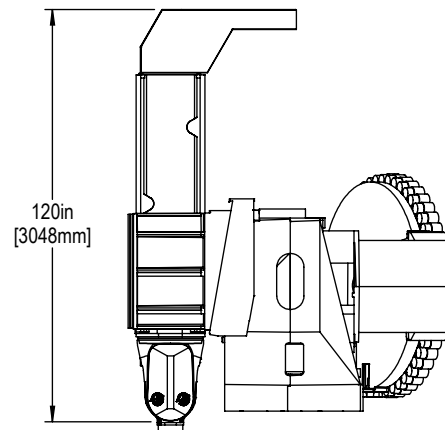
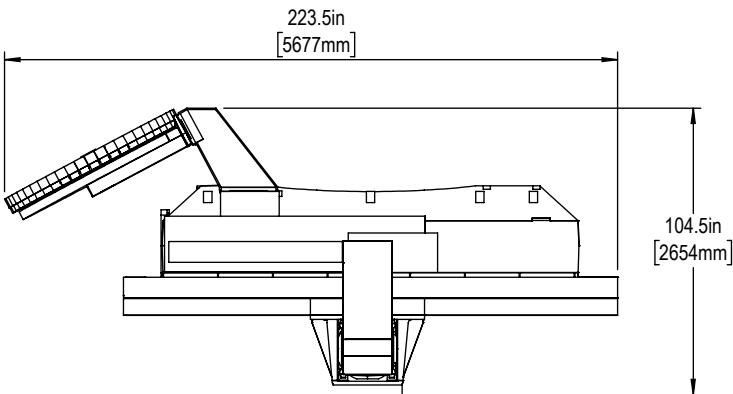


TABLE SHIPPING SIDE CLEARANCE

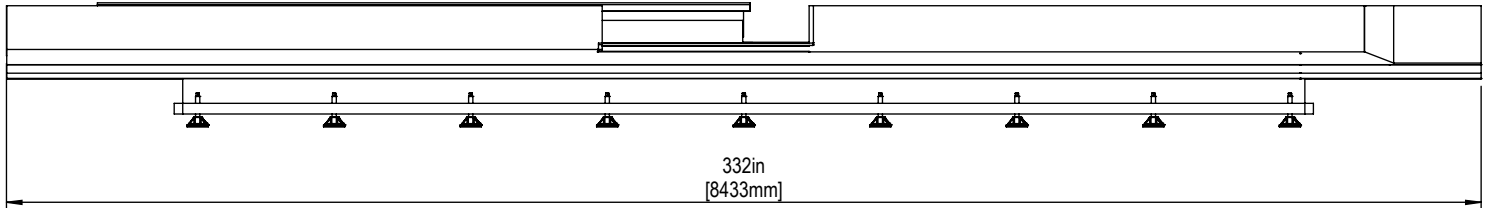
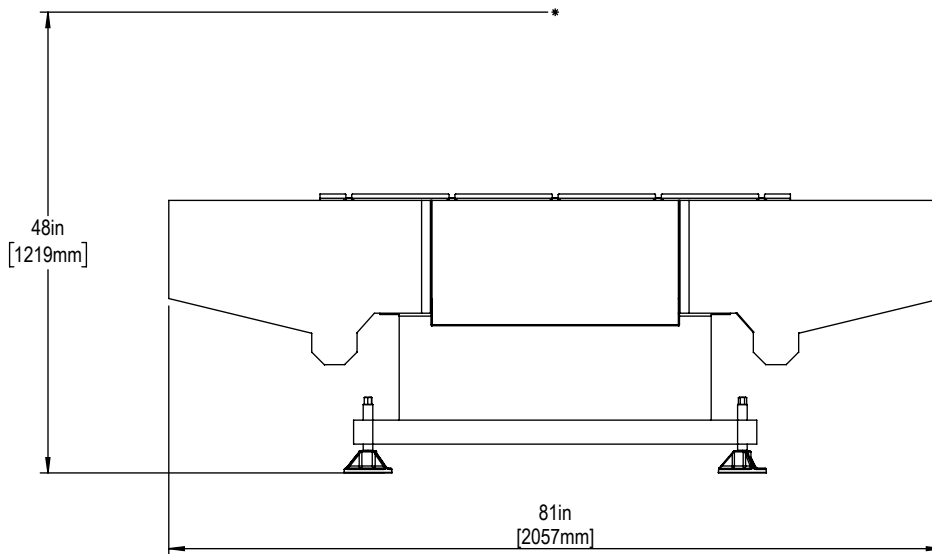
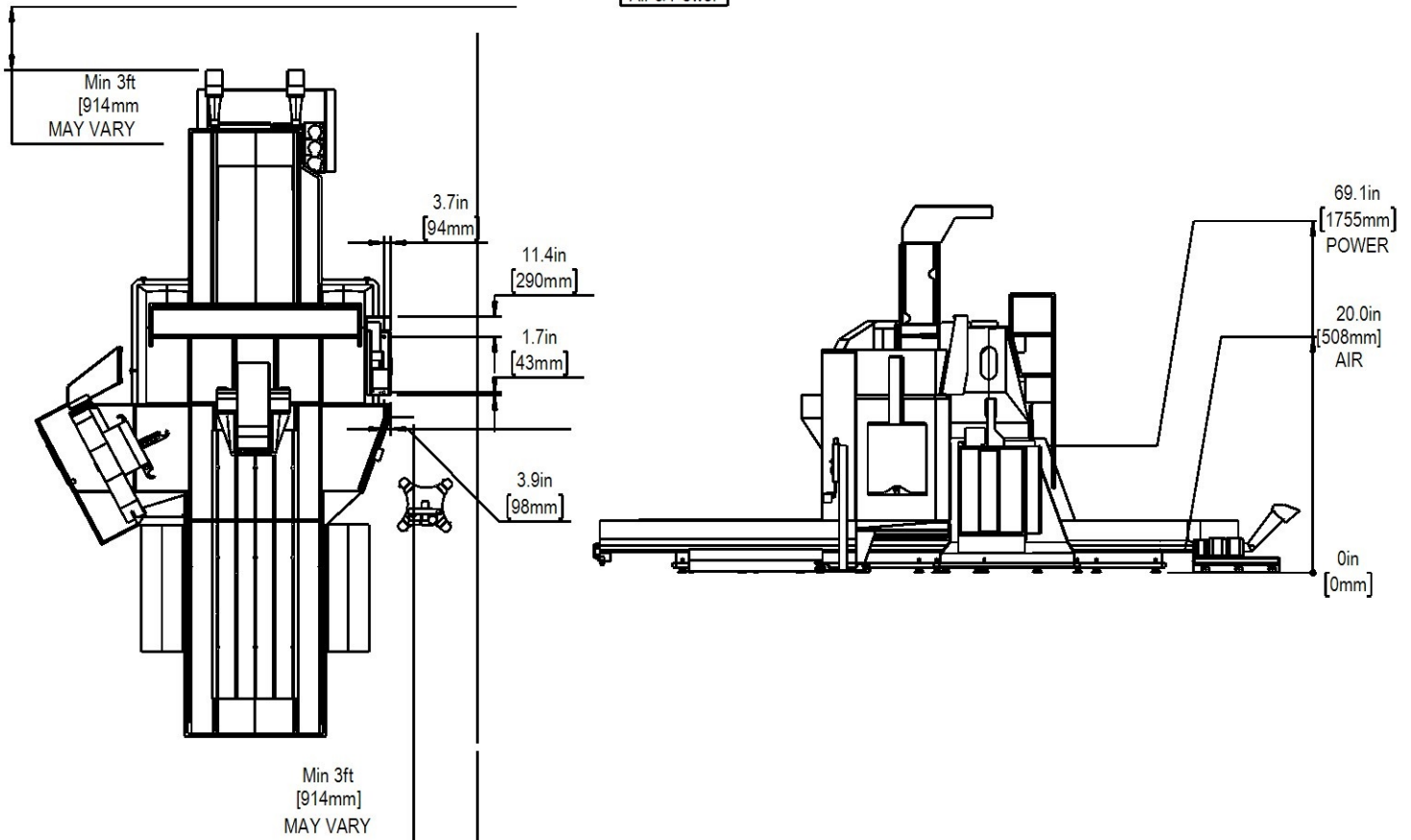


TABLE SHIPPING FRONT CLEARANCE

Note: Allow a height clearance of at least 48in [1219mm] for additional components shipped with table.

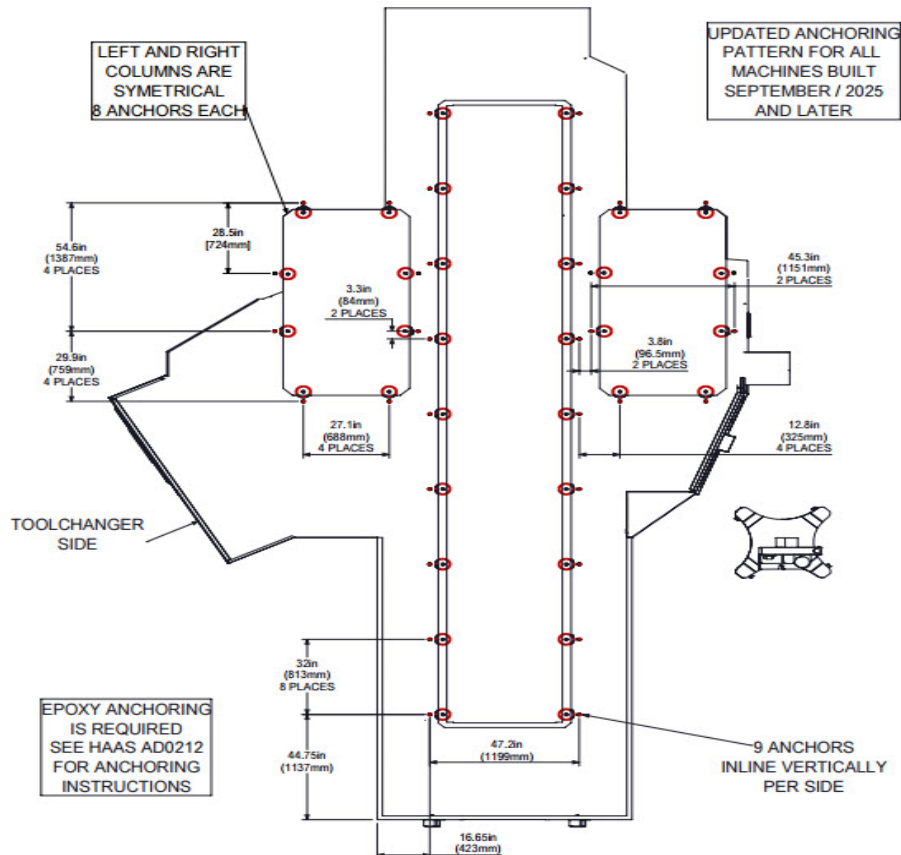


Air & Power



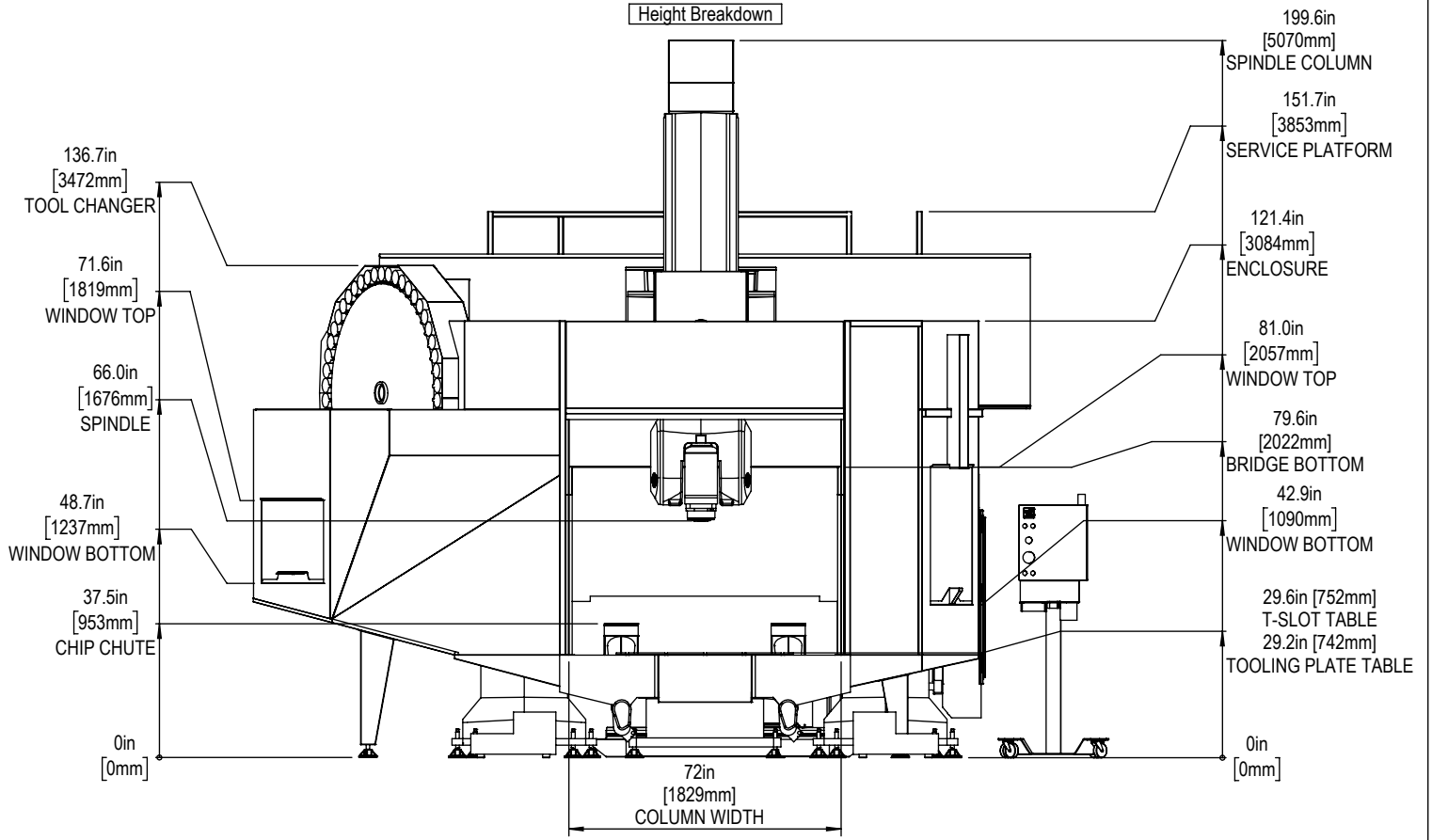
Maintain 3 feet [915mm] clearance to the nearest obstruction around all sides of machine perimeter for maintenance access

Anchor Pattern

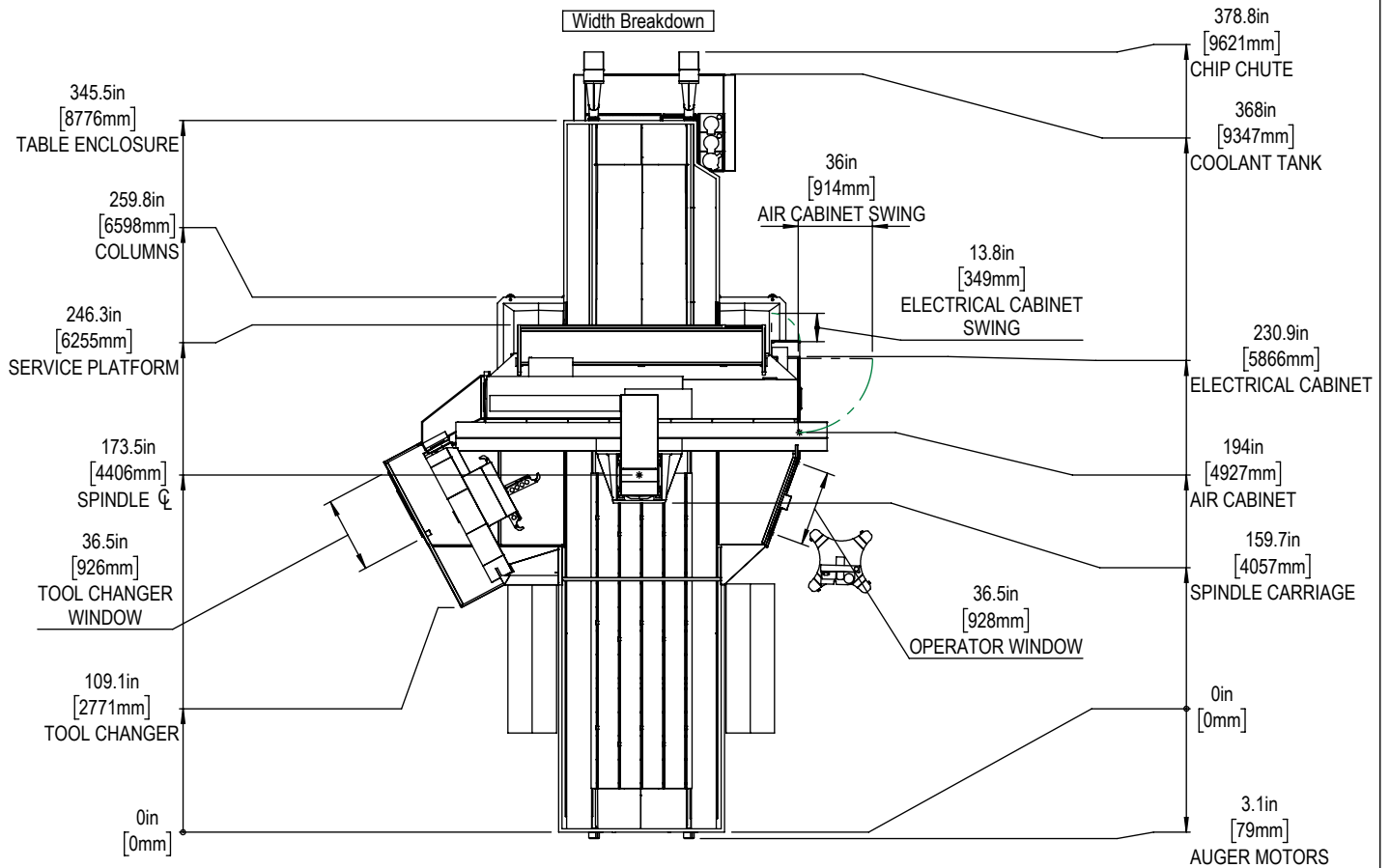


For precise locations and specifications please use template in Anchoring Kit found at Haascnc.com

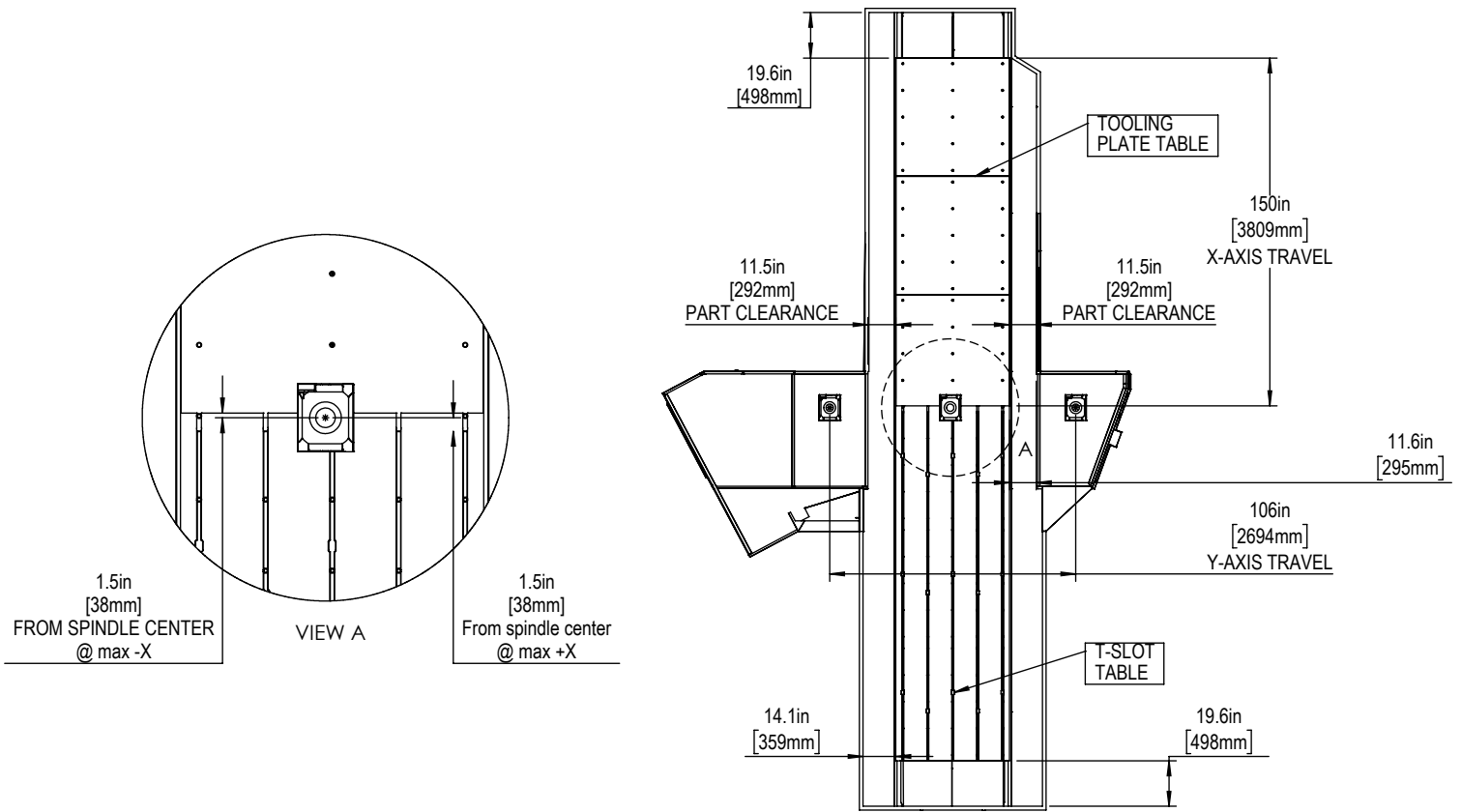
Height Breakdown



Width Breakdown

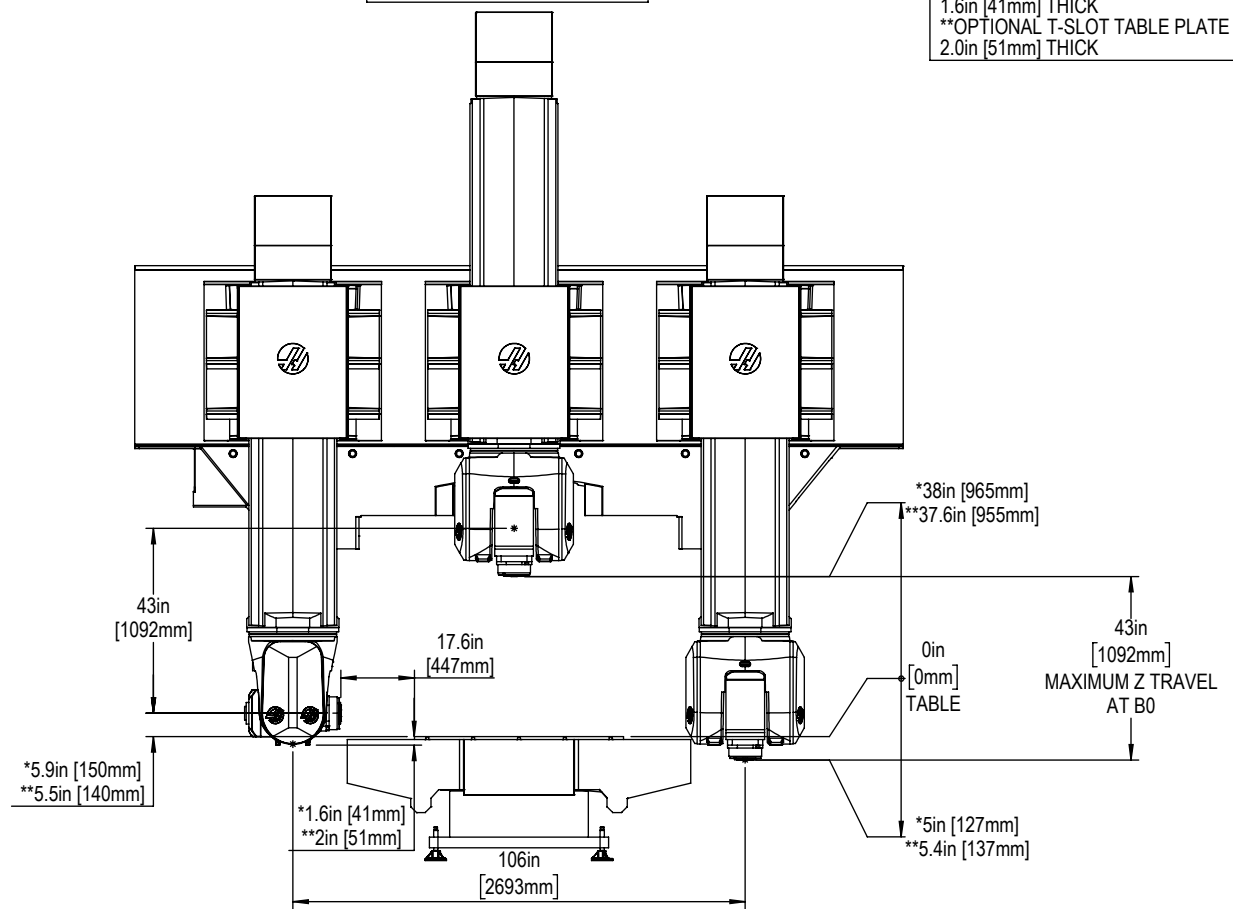


X&Y-Axis Travel and Clearance

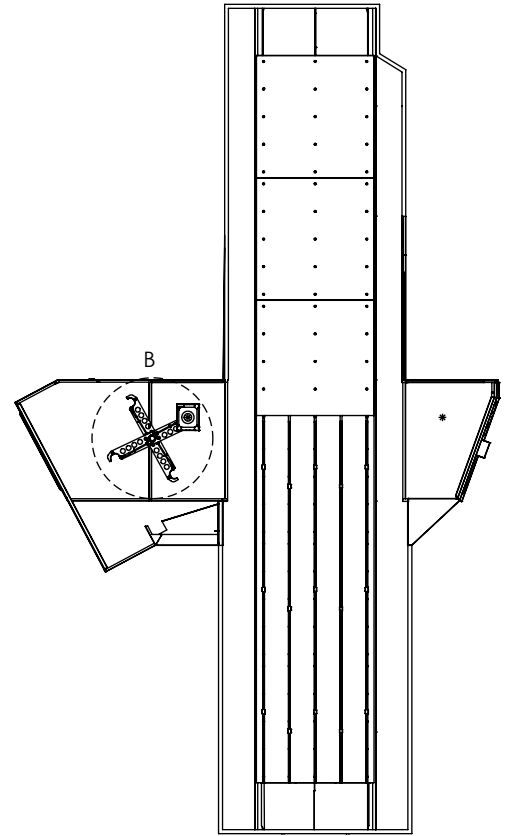
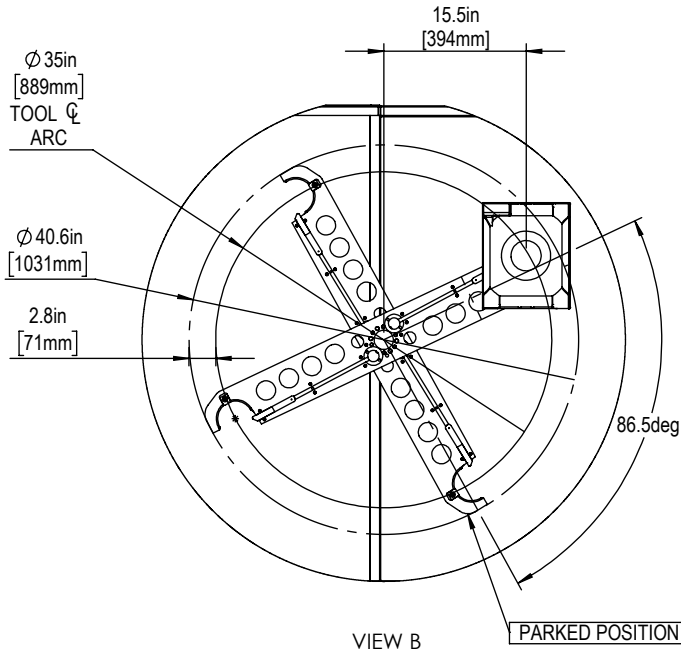


Z-AXIS TRAVEL & CLEARANCE

*STANDARD TOOLING PLATE TABLE IS 1.6in [41mm] THICK
 **OPTIONAL T-SLOT TABLE PLATE IS 2.0in [51mm] THICK

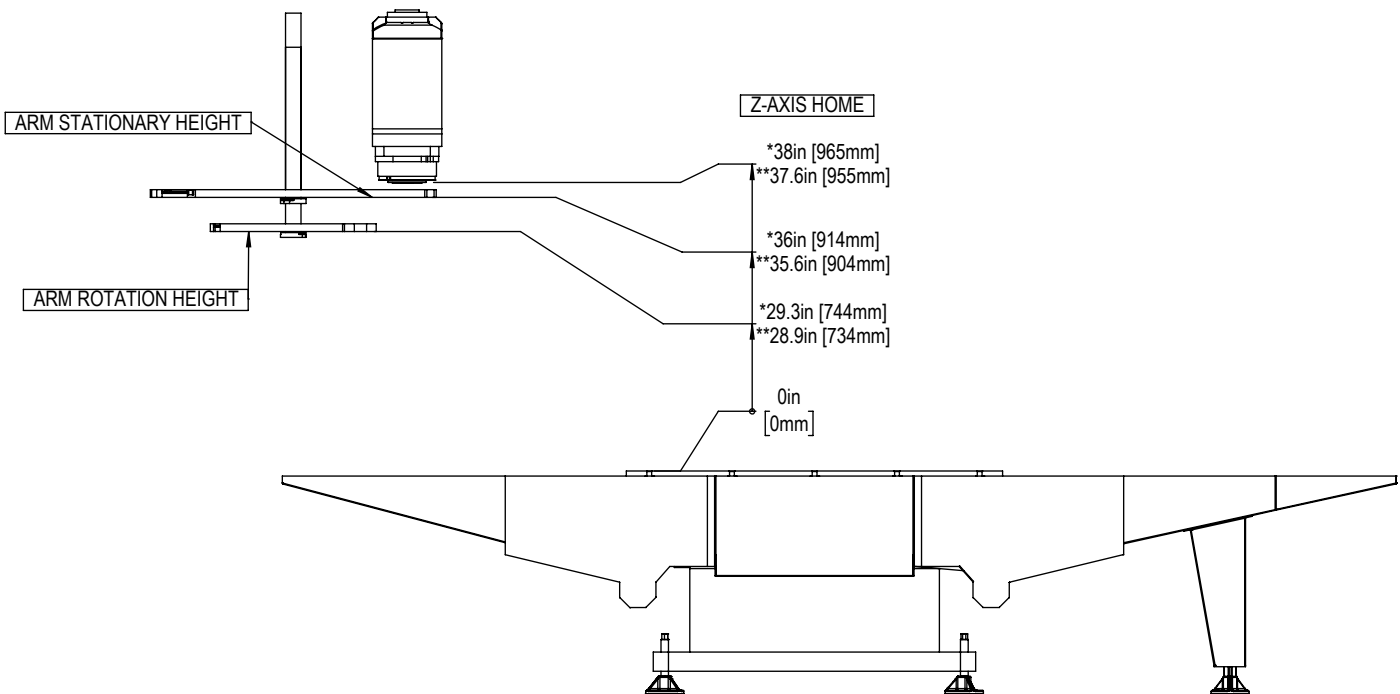


TOOL CHANGER ARM CLEARANCES

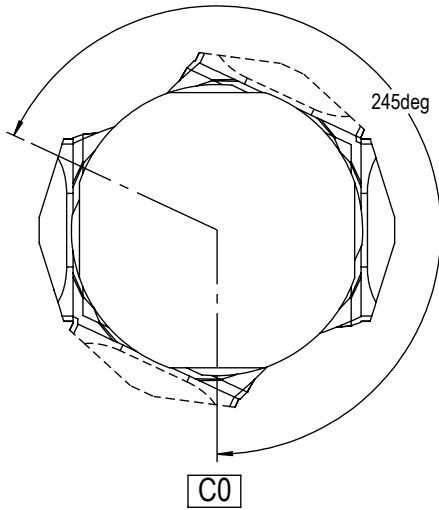


Z-AXIS TRAVEL & CLEARANCE

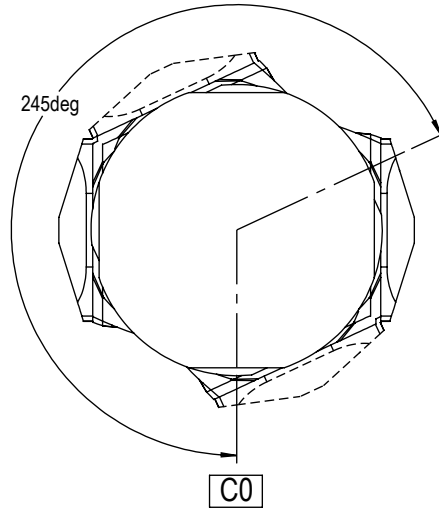
*TOOLING PLATE TABLE
**T-SLOT PLATE TABLE



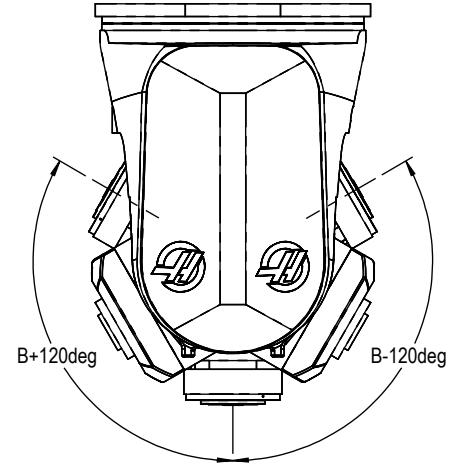
X&Y-Axis Travel and Clearance



+245° C-AXIS ROTATION
(COUNTER-CLOCKWISE)

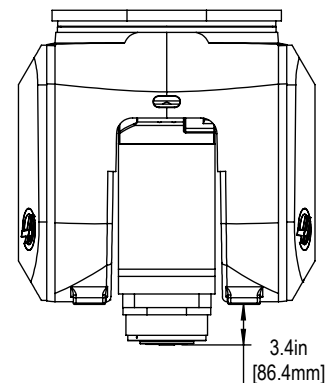
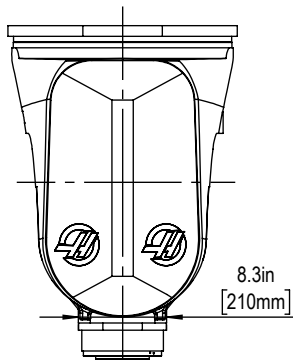
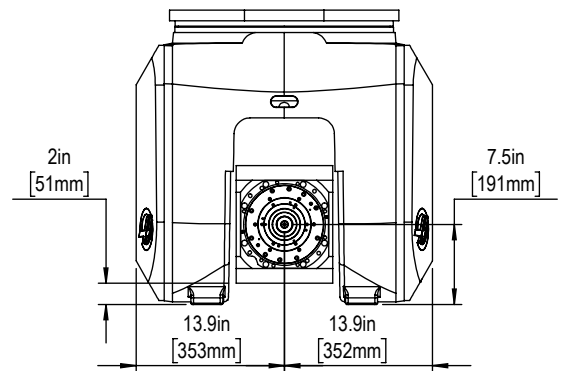
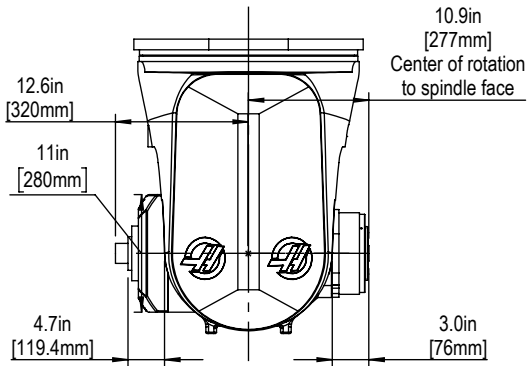


-245° C-AXIS ROTATION
(CLOCKWISE)

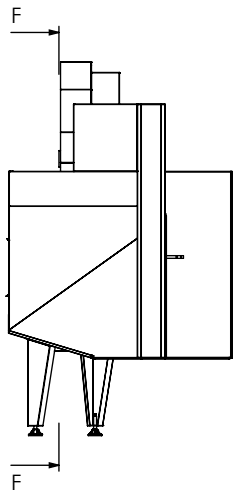
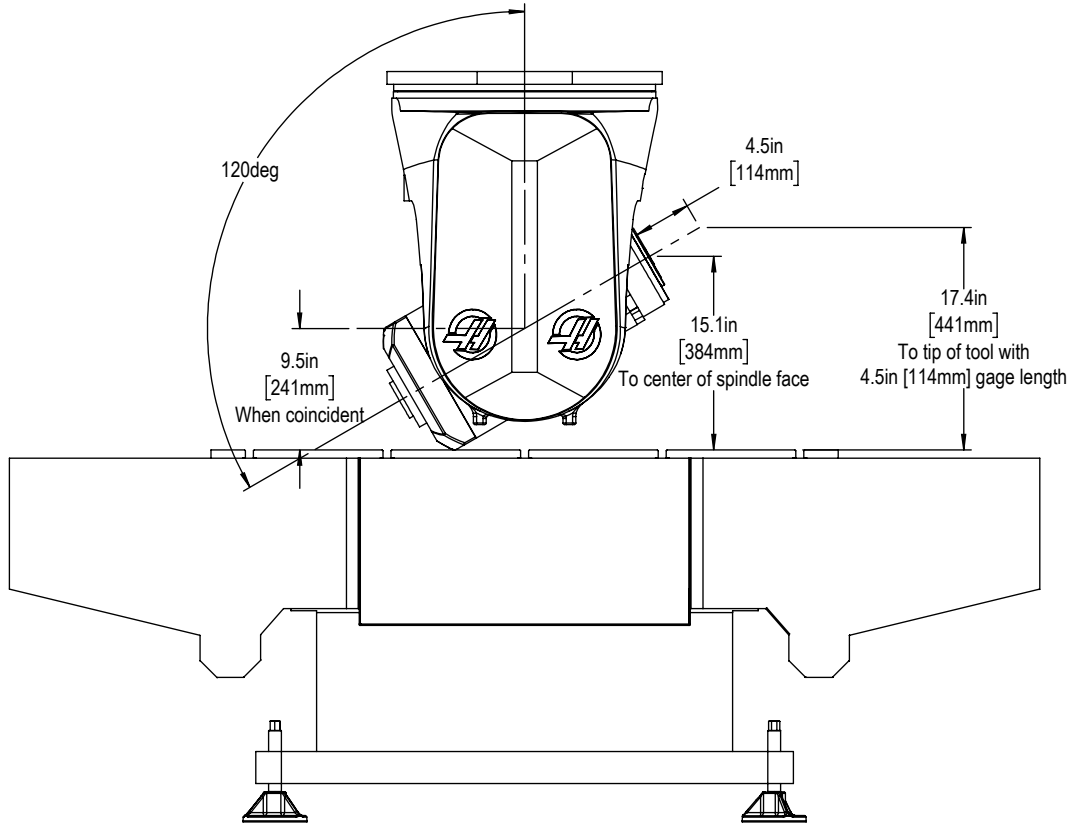


B Axis Tilt limits

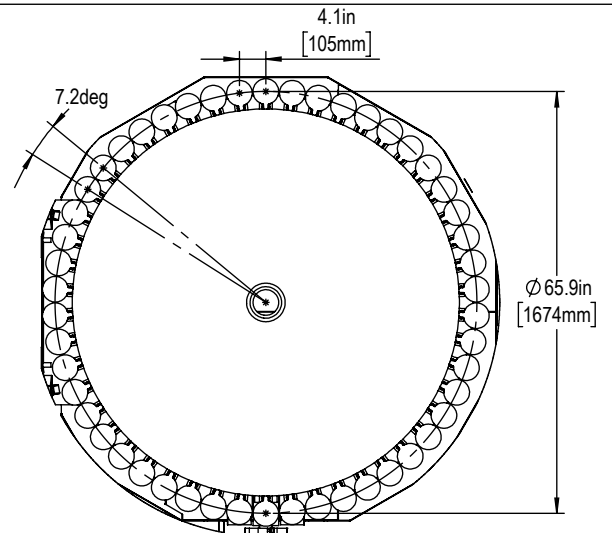
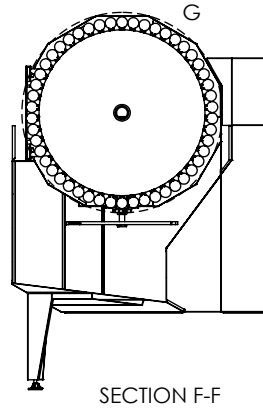
YOKE & SPINDLE DIMENSIONS



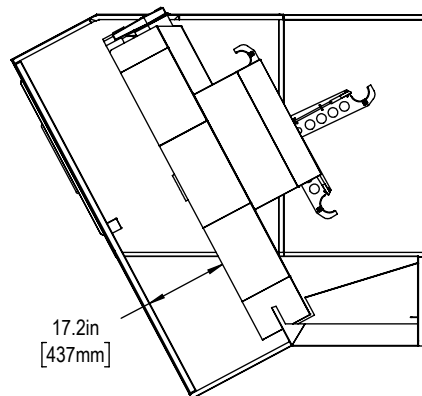
Minimum Z height to reach B120°



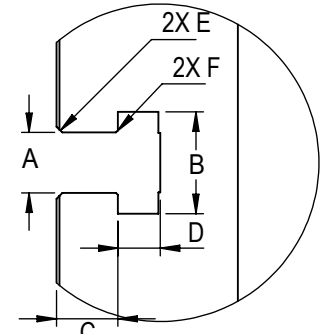
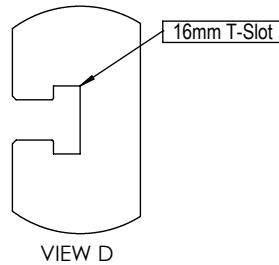
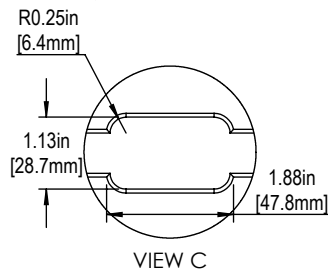
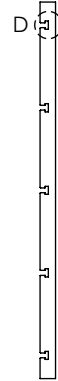
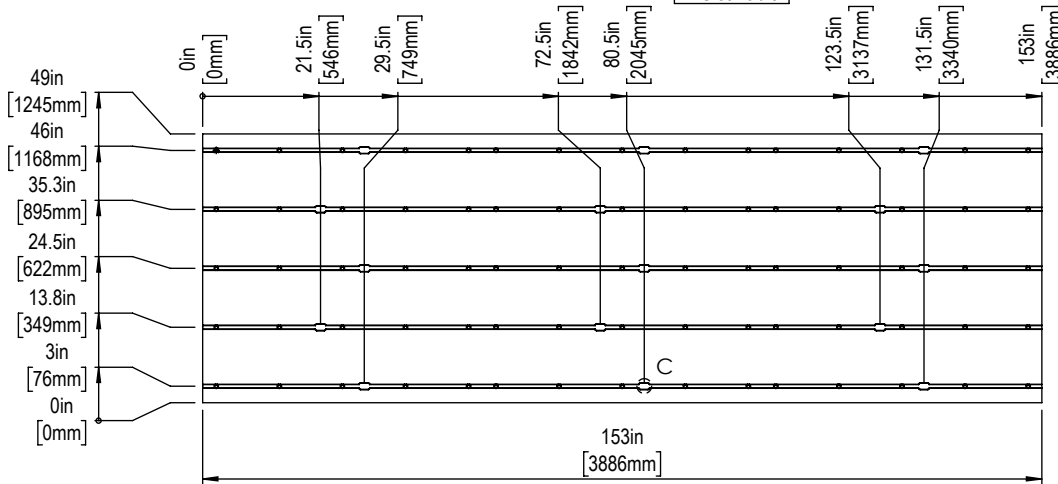
Tool Changer



VIEW G



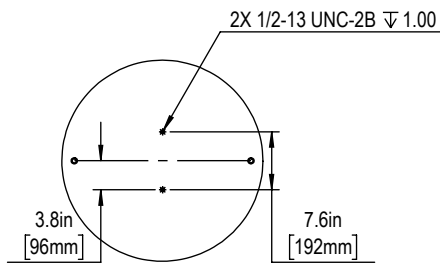
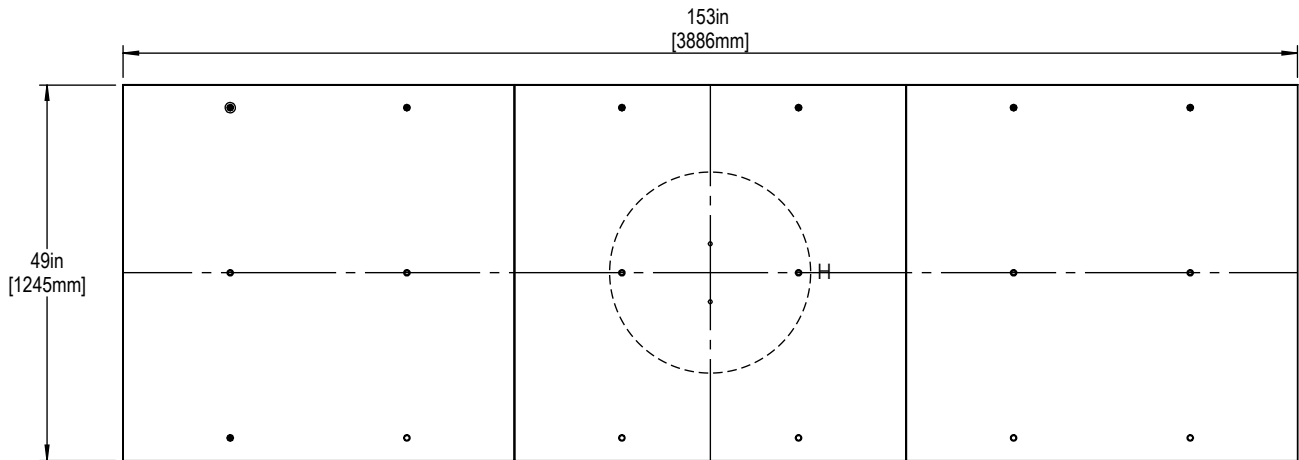
T-Slot Table



Slot Size	A	B	C	D	E	F
16mm	0.628±0.002	1.06±0.02	0.640±0.010	0.420±0.010	0.06x45°	0.020x45°

T-Slot Dimensions in inches

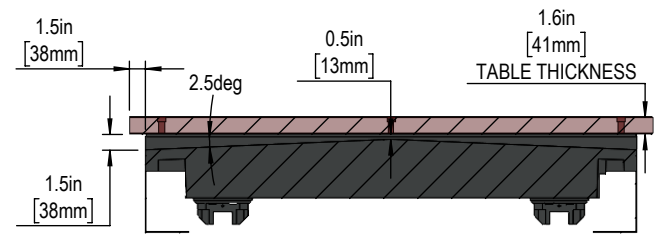
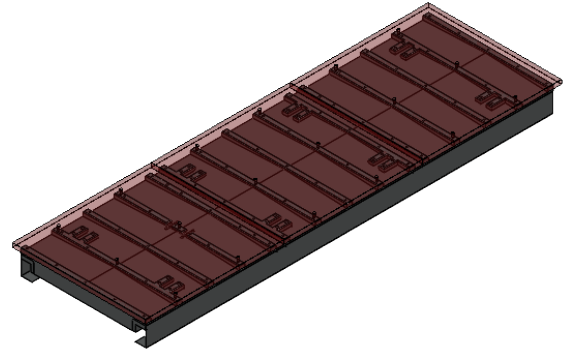
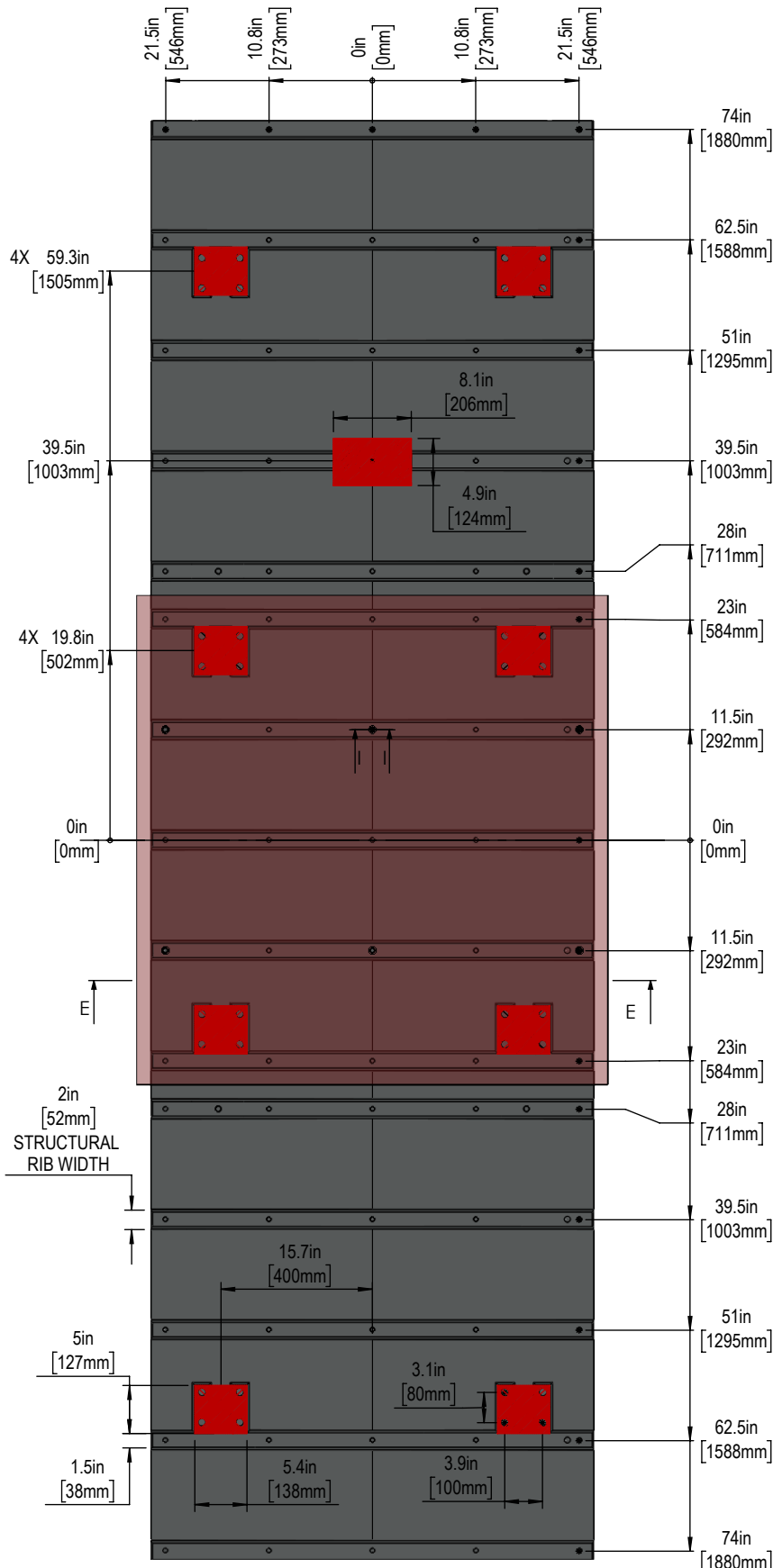
Threaded Table



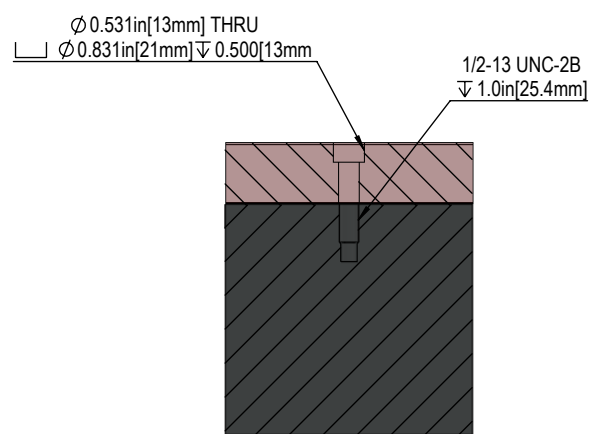
VIEW H
MRZP TOOLING BOLT HOLES

NOTE: CONSULT THE NO-CUT ZONE PAGE BEFORE DRILLING OR TAPPING ON THE TABLE TO AVOID ANY DAMAGE TO CRITICAL COMPONENTS

Table Truck



SECTION E-E



SECTION I-I

NOTE:
 1. FIXTURE DRILLING MUST NOT EXCEED 1.5in [38.1mm] DUE TO STRUCTURAL RIB CLEARANCE. EXCEEDING THIS LIMIT MAY RESULT IN DAMAGE TO THE TABLE.
 2. AVOID CUTTING IN AREAS WHERE STRUCTURAL RIBS AND BOLT FIXTURE THREADS ARE FOUND.
 3. IMAGE SHOWN WITH THE STANDARD TOOLING PLATE