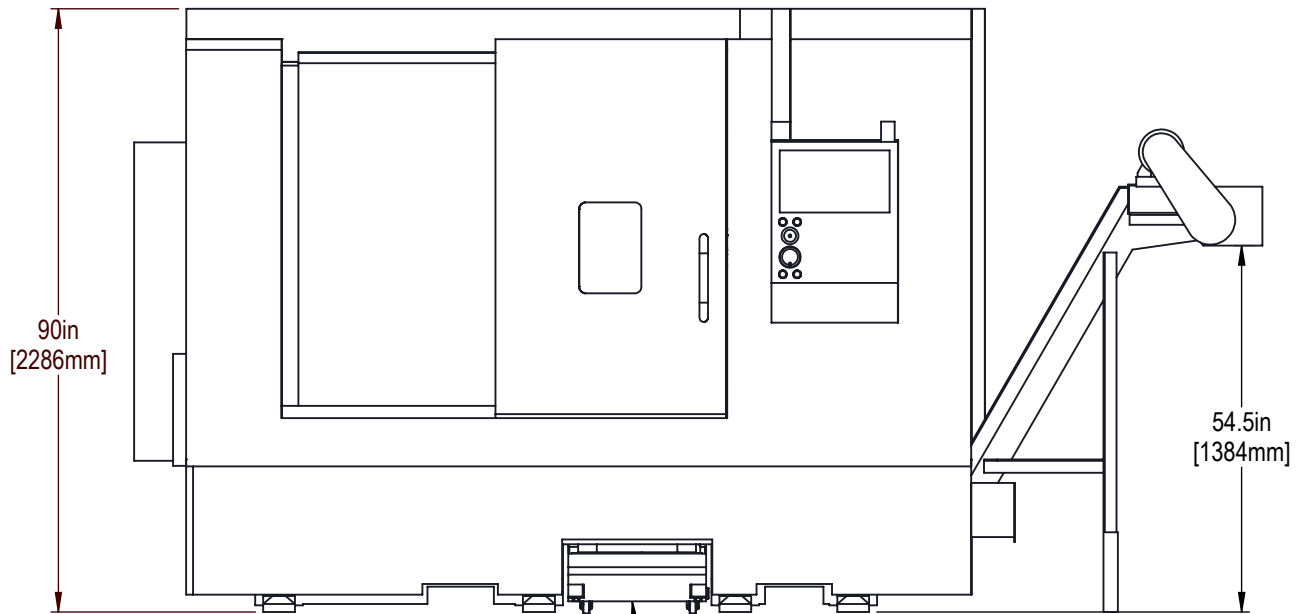




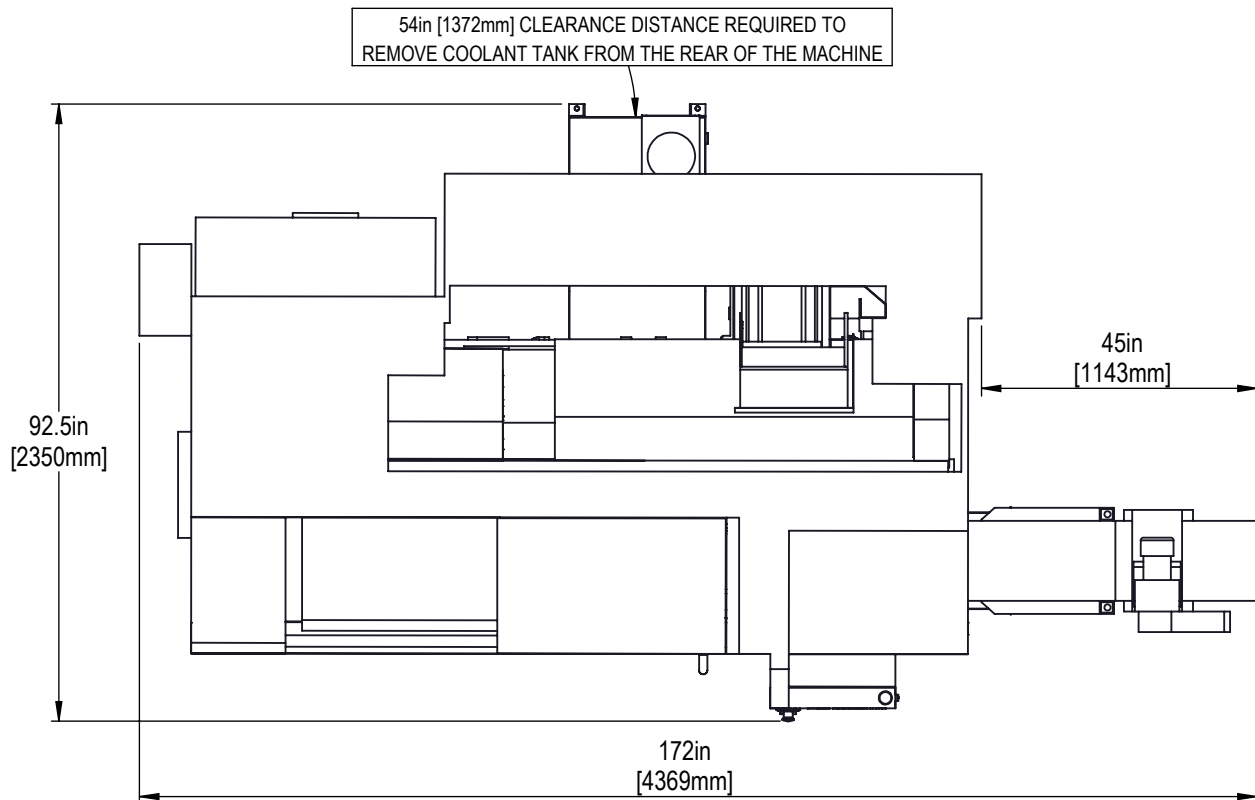
FRONT VIEW - OPERATIONAL HEIGHT DIMENSION



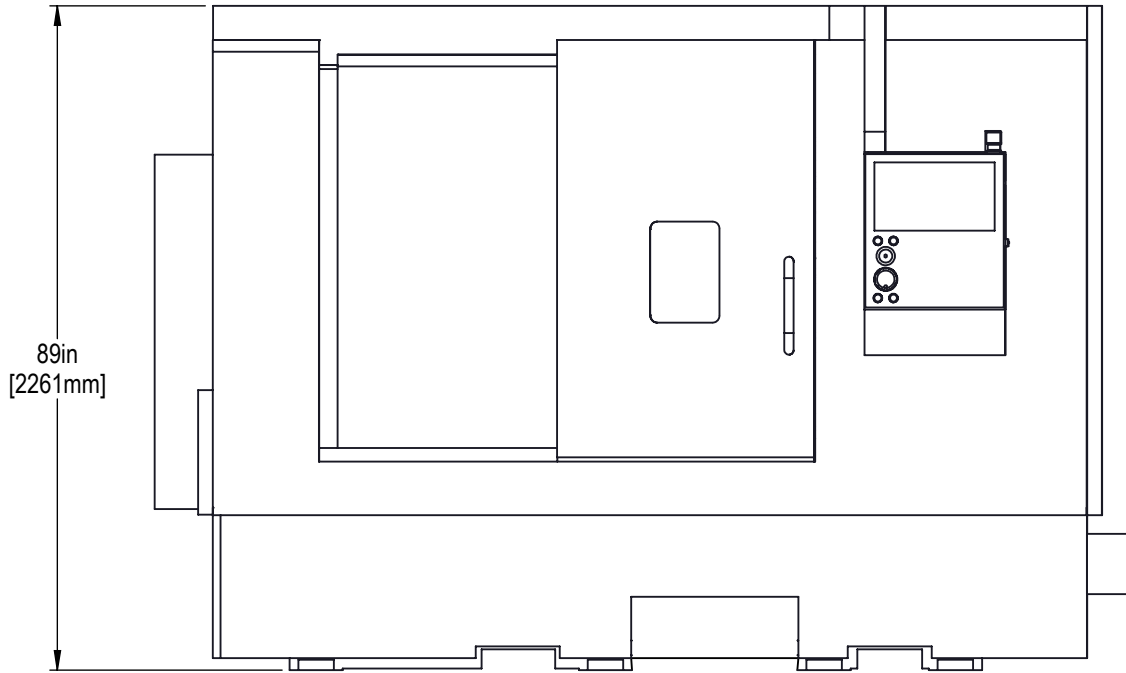
COOLANT TANK MAY ALSO BE REMOVED FROM THE FRONT.  
- ACCESS PANEL AND PUMP(S) REMOVAL REQUIRED -  
(REMOVED PANEL SHOWN ABOVE)

DRAWING NOT TO SCALE

TOP VIEW - OPERATIONAL DEPTH AND WIDTH DIMENSIONS

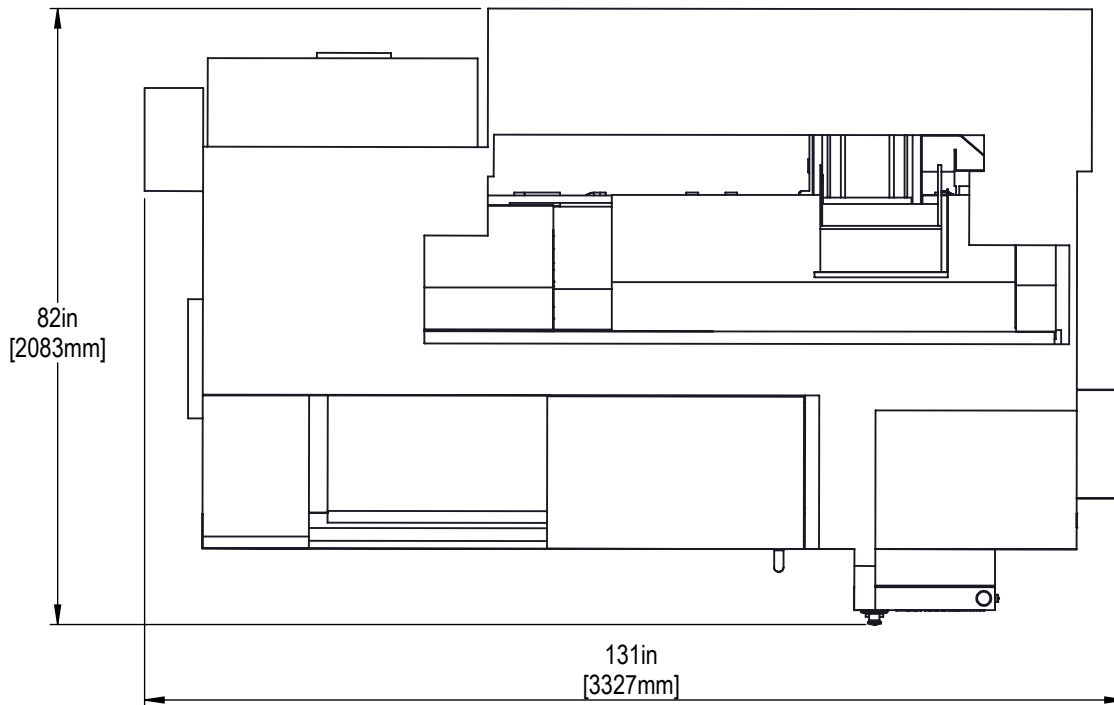


REFER TO THE INSTALLATION INSTRUCTIONS FOR STEP BY STEP GUIDANCE



DIMENSIONS SHOWN FROM THE BOTTOM OF THE BASE TO THE HIGHEST POINT

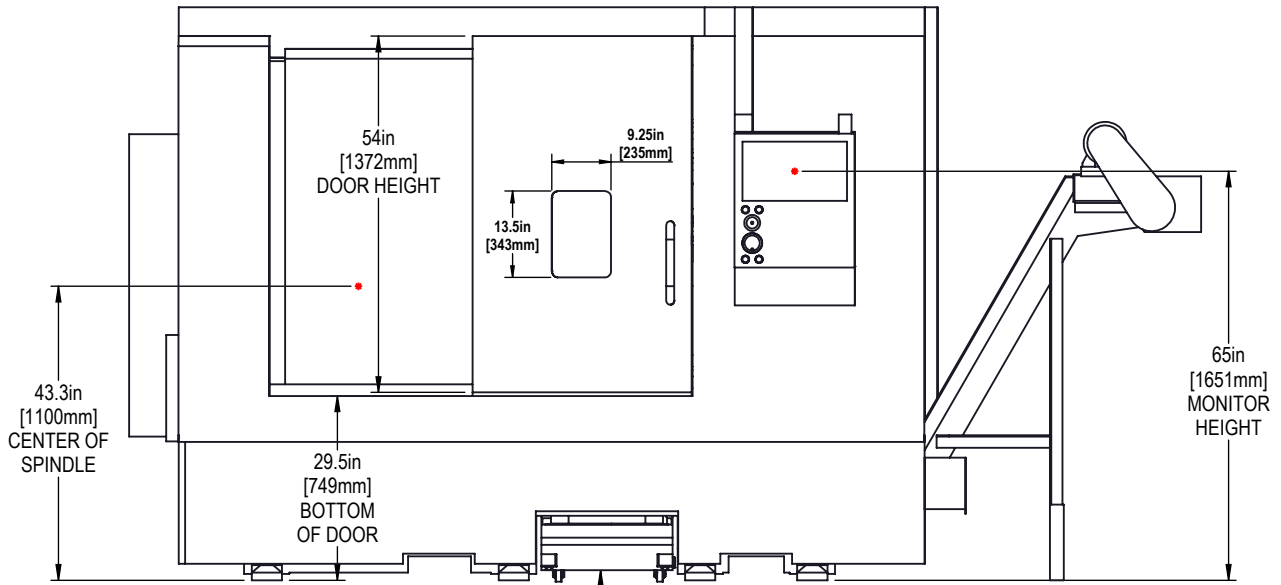
LEVELING SCREWS AND PADS ARE REMOVED TO REDUCE HEIGHT



DIMENSIONS SHOWN WITH MACHINE OFF OF THE PALLET

OPTIONAL CONVEYOR SHIPS OFF OF THE MACHINE WHEN SELECTED

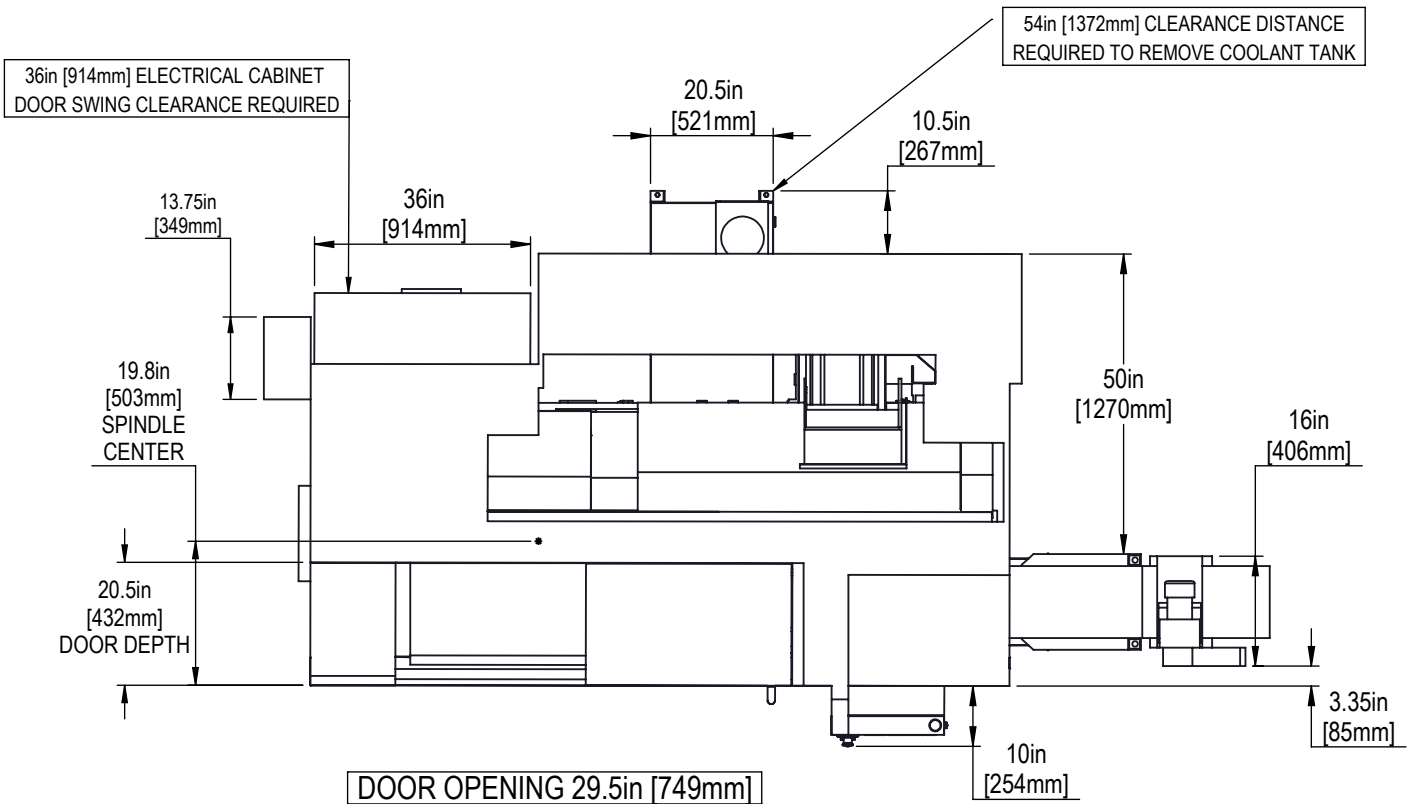
FRONT VIEW - HEIGHT DIMENSIONS



COOLANT TANK MAY ALSO BE REMOVED FROM THE FRONT.  
- ACCESS PANEL AND PUMP(S) REMOVAL REQUIRED -  
REMOVED PANEL SHOWN ABOVE

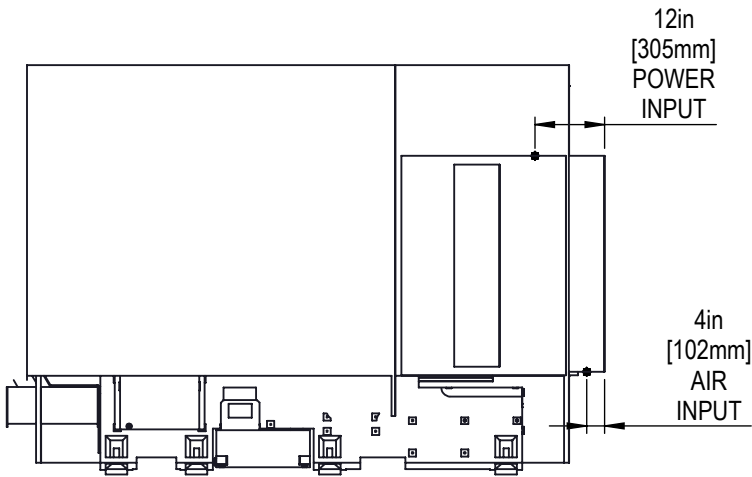
DRAWINGS NOT TO SCALE

TOP VIEW - DEPTH AND WIDTH DIMENSIONS

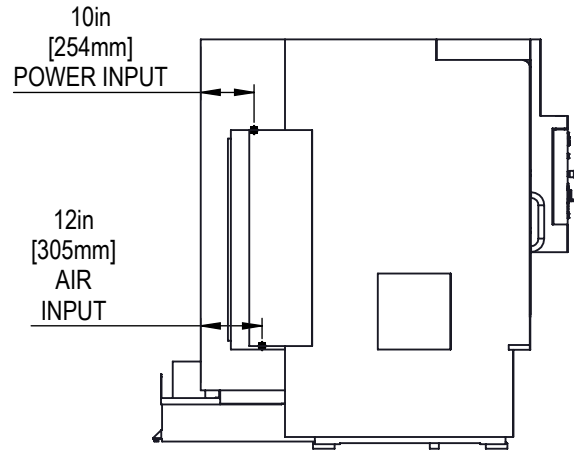




BACK VIEW



LEFT SIDE VIEW



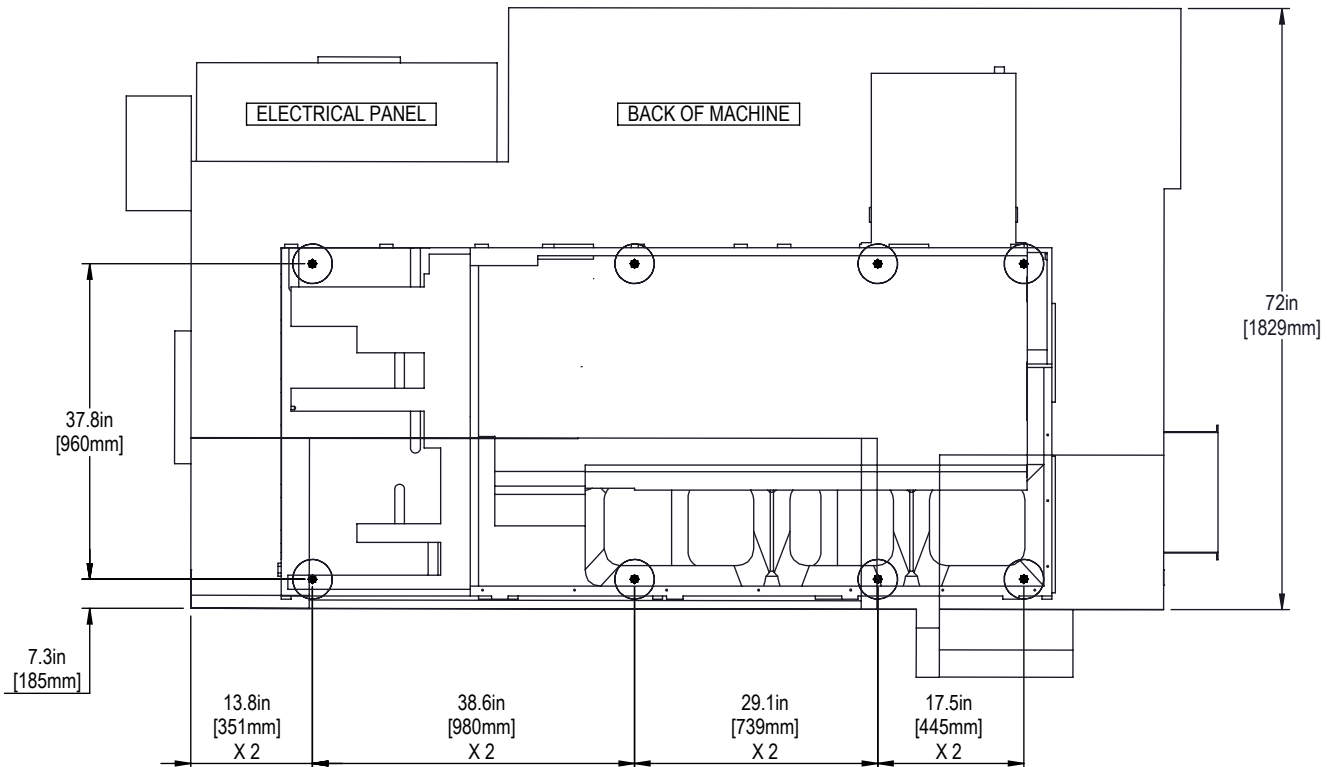
REFER TO MACHINE INSTALLATION INSTRUCTIONS FOR DETAILS

36in [914mm] CLEARANCE REQUIRED FOR ELECTRICAL CABINET DOOR SWING

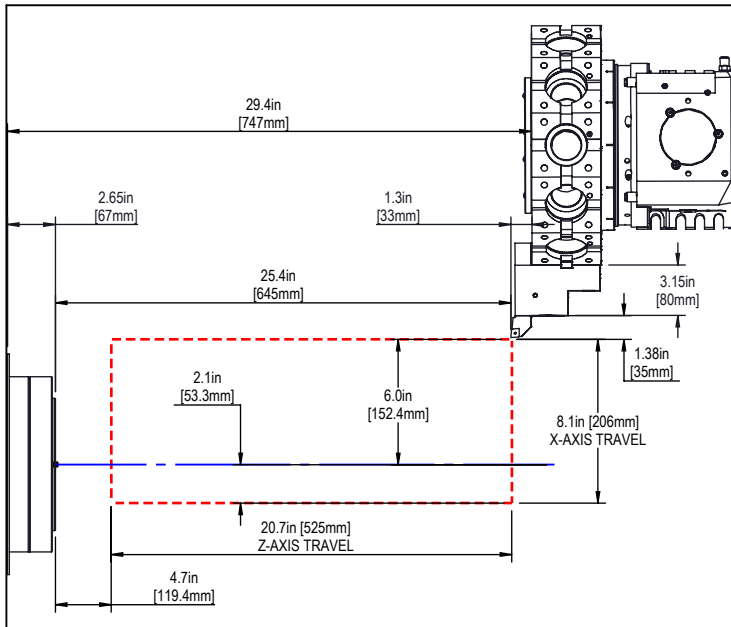
MACHINE MUST BE PLACED ON A SINGLE CONTINUOUS CONCRETE SLAB. SLAB MUST EXTEND 12in [305mm] BEYOND LEVELING PAD LOCATIONS IN ALL DIRECTIONS

THERE IS NO CURRENT ANCHORING REQUIREMENT FOR THIS MACHINE

TOP VIEW



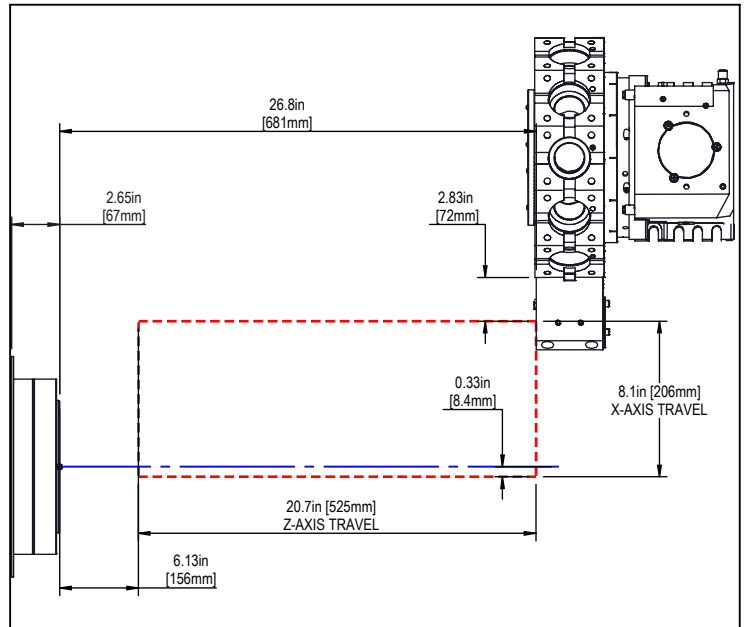
**BMT65 OD TURNING**



ALL Z-AXIS DIMENSIONS TO SPINDLE FACE

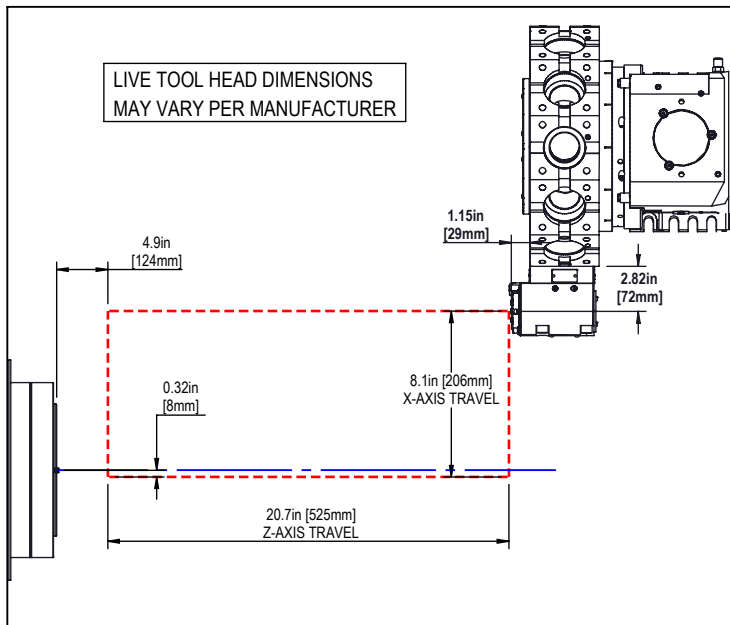
ALL X-AXIS DIMENSIONS ARE TO SPINDLE CENTER

**BMT65 ID TURNING**



NOTE: DRAWINGS NOT TO SCALE

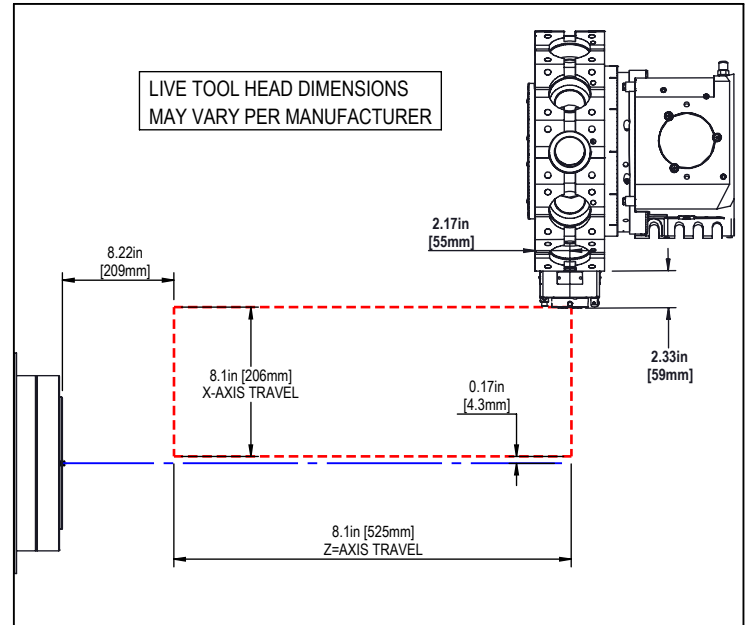
**BMT65 90-DEGREE LIVE TOOL**



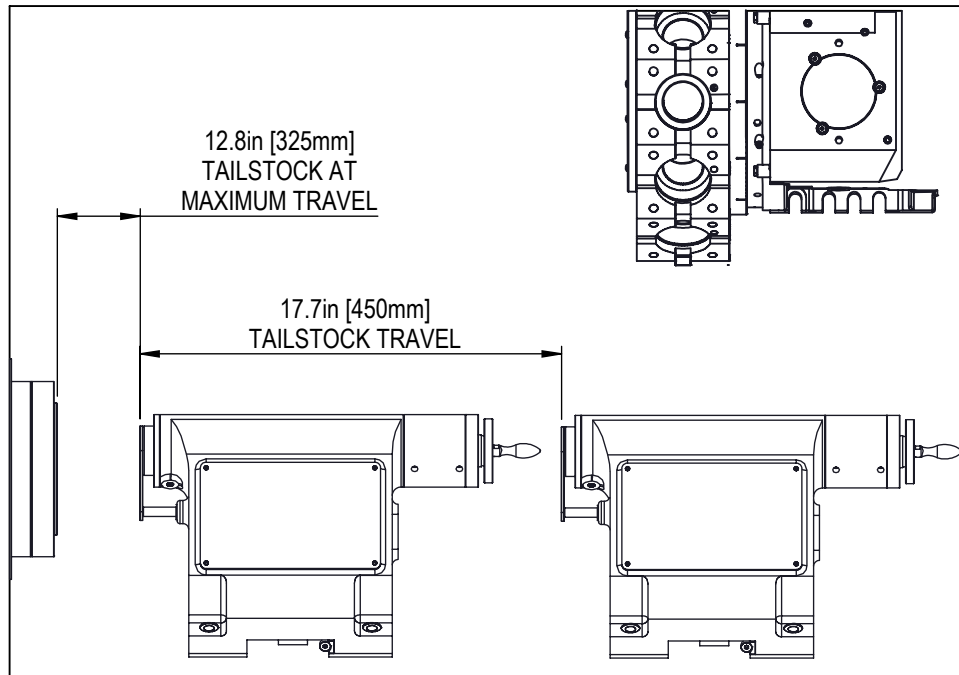
ALL Z-AXIS DIMENSIONS TO SPINDLE FACE

ALL X-AXIS DIMENSIONS ARE TO SPINDLE CENTER

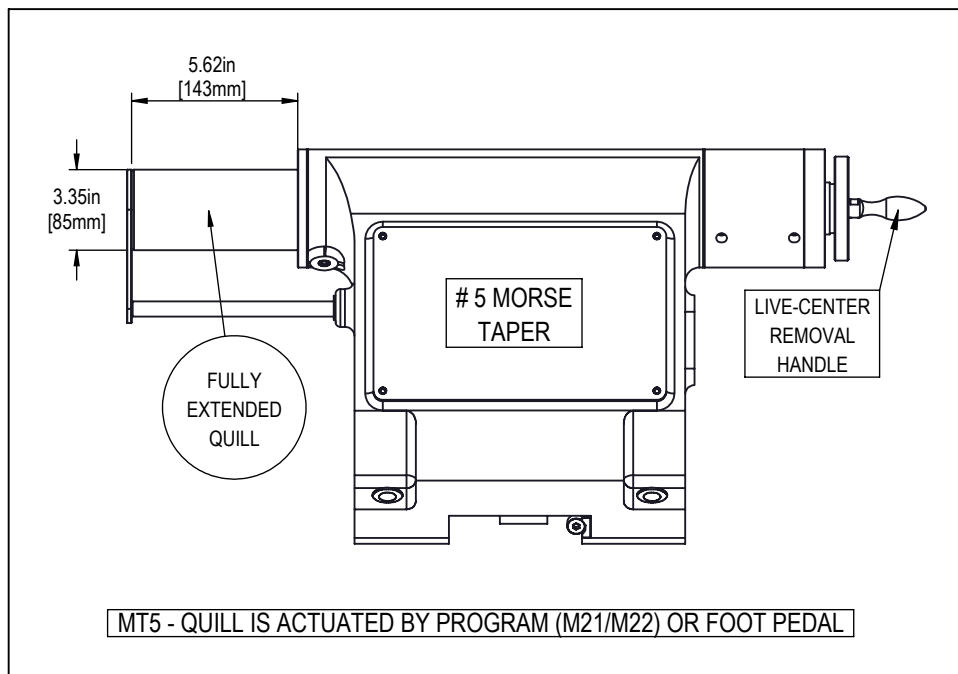
**BMT65 STRAIGHT LIVE TOOL**



NOTE: DRAWINGS NOT TO SCALE

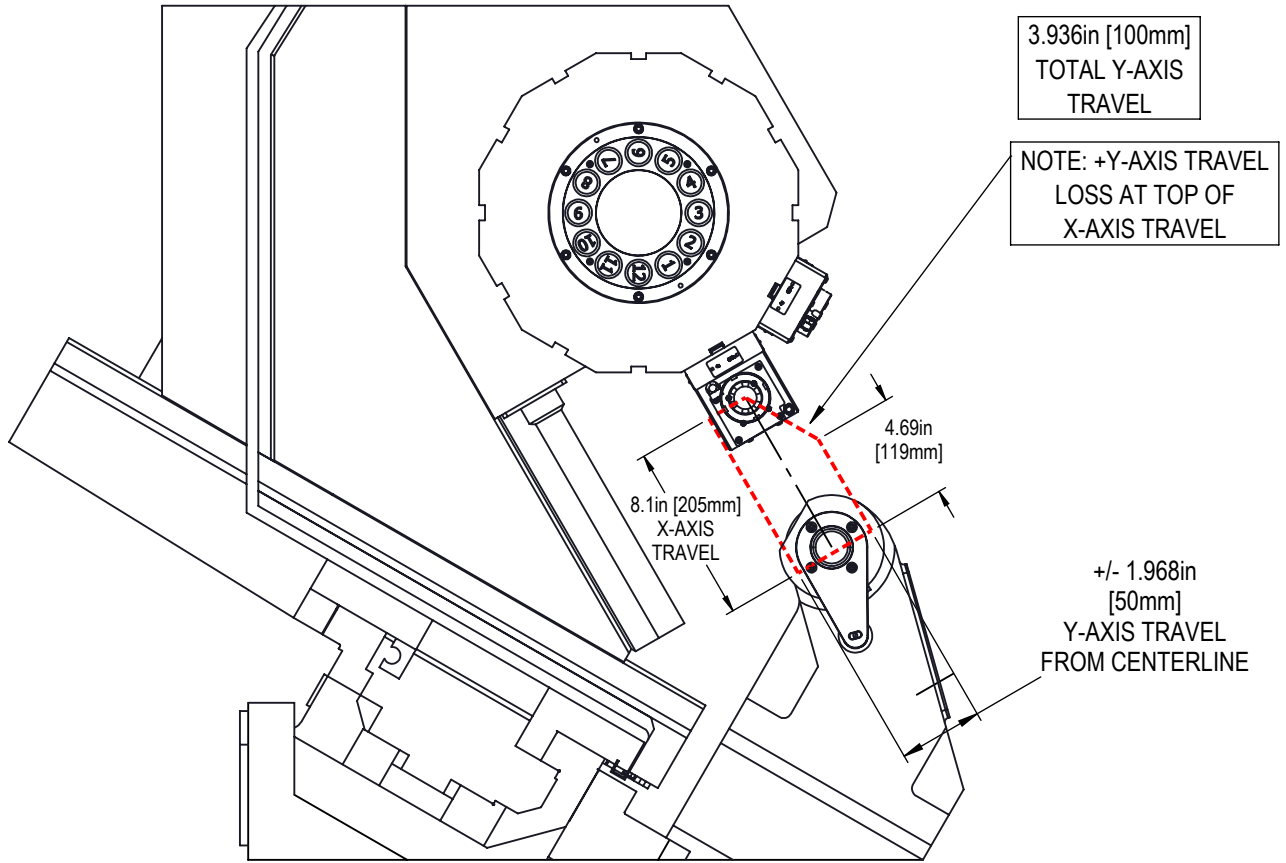


TAILSTOCK BODY IS TOWED AND POSITIONED BY THE Z-AXIS WEDGE

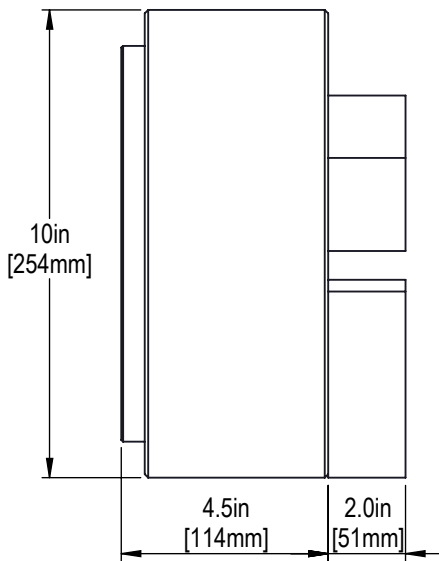


M321 (P) - TAILSTOCK ENGAGE AND POSITION

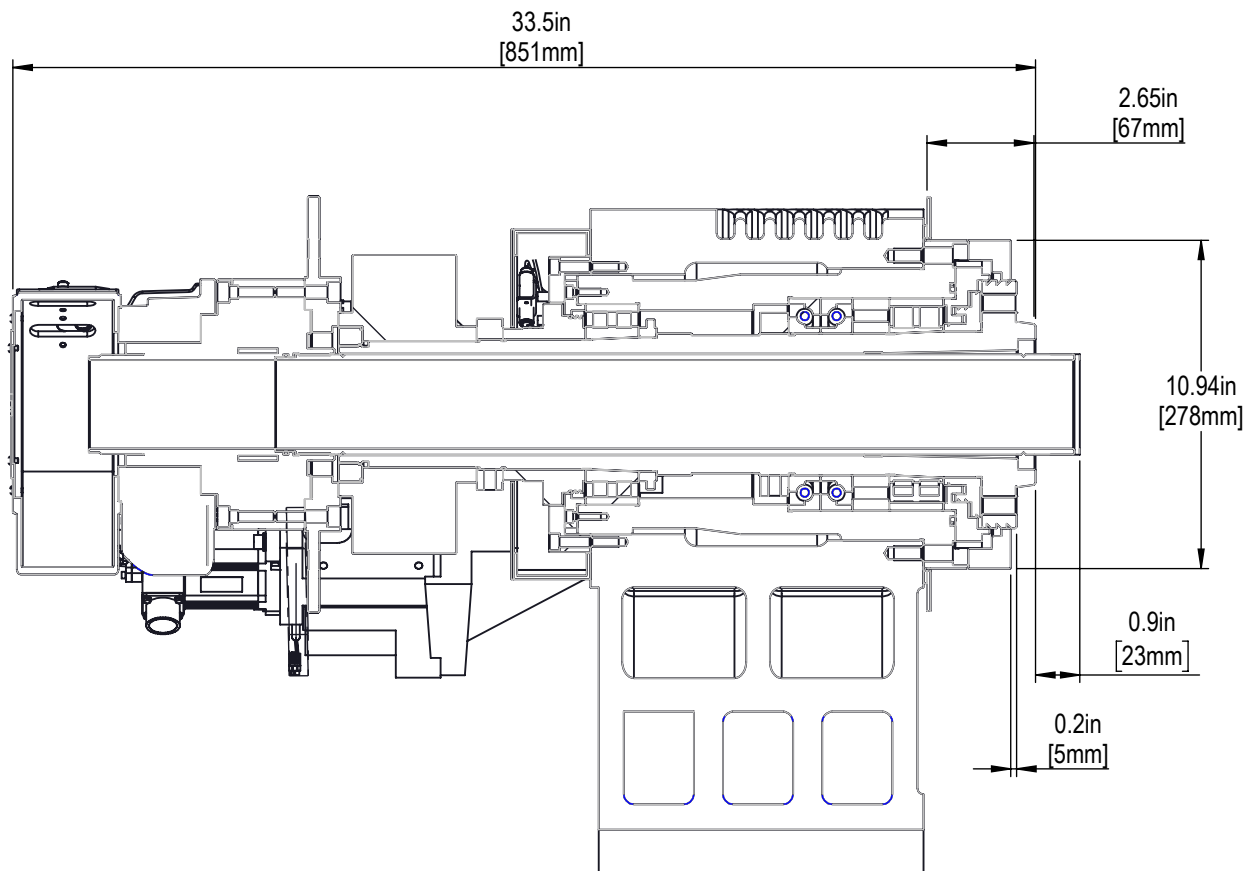
M322 - TAILSTOCK PARK OR HOME AND DISENGAGE



SIDE VIEW



DESCRIPTION	
NOMINAL CHUCK DIAMETER	10in [254mm]
CHUCK BORE DIAMETER	3.00in [76mm]
NUT THREAD	M85 X 2.0
FACE TO DRAWTUBE EXTENDED	2.6in [66mm]
FACE TO DRAWTUBE RETRACTED	1.6in [41mm]
MASTER JAW SERRATIONS	1.5mm X 60°
MASTER JAW SCREW THREADS	0.47in [12mm]
MASTER JAW SCREW SPACING	1.18in [30mm]
MASTER JAW SLOT WIDTH	0.63in [16mm]
SPINDLE NOSE	A2-8
MAXIMUM SPEED	3200-rpm

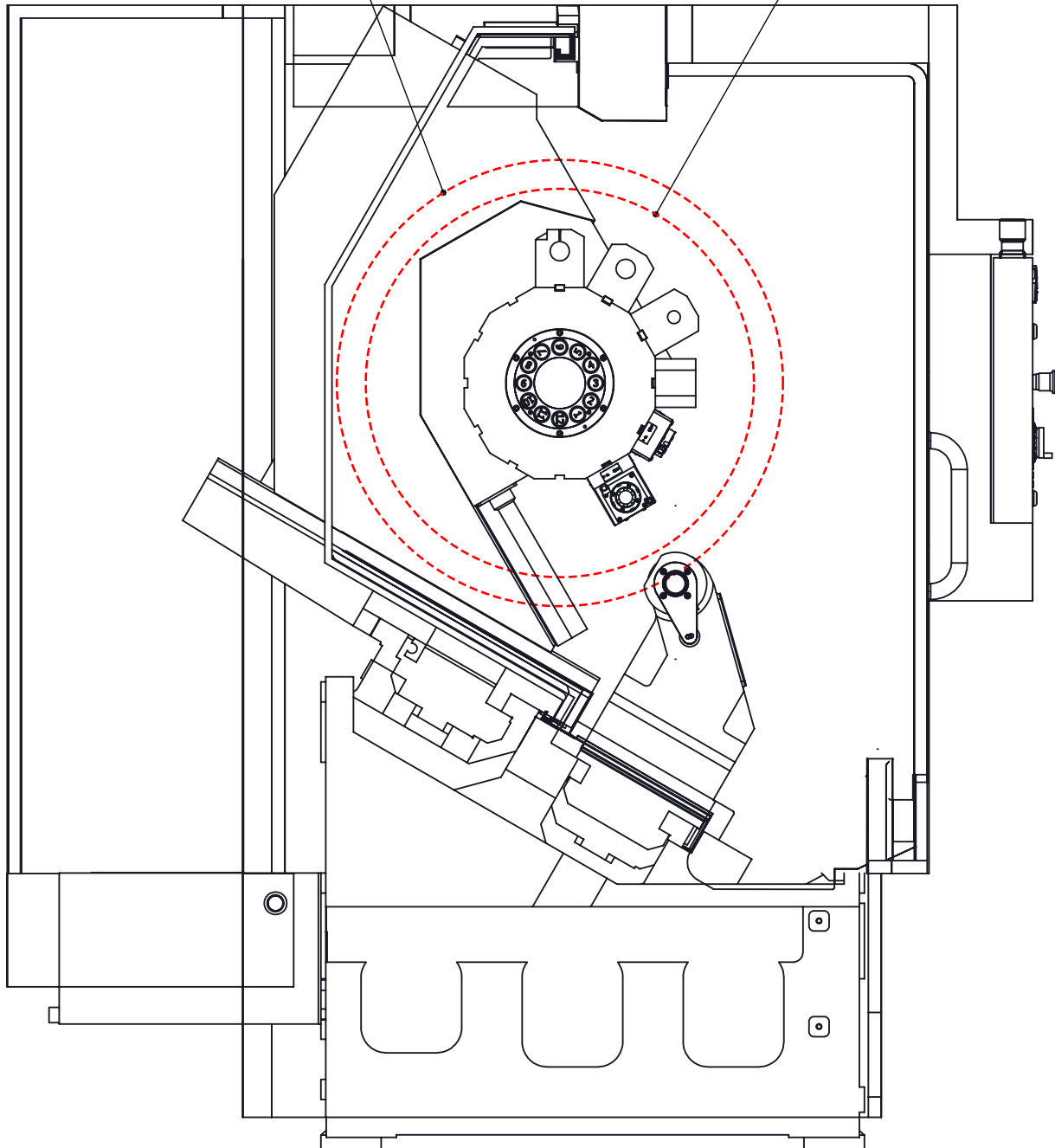


DESCRIPTION	
DRAWTUBE THREAD	M85 x 2.0
DRAWTUBE INTERNAL DIAMETER	2.9in [74 mm]
DRAWTUBE EXTENDED DISTANCE FROM FACE	2.6in [66mm]
DRAWTUBE RETRACTED DISTANCE FROM FACE	1.6in [41mm]
SPINDLE INTERNAL BORE DIAMETER	3.39in [86mm]
SPINDLE INTERNAL COUNTERBORE DIAMETER	4.33in [110mm]
SPINDLE INTERNAL COUNTERBORE DEPTH	0.59in [15mm]

HAAS AUTOMATION STRONGLY RECCOMENDS TAKING DIRECT MEASUREMENTS FROM THE MACHINE FOR THE PURPOSE OF USING 3RD-PARTY WORKHOLDING

Maximum Tool Length from  
Turret Side (Periphery) to Waycover  
Interference is 11in [280mm]

Maximum Tool Length from  
Turret Side (Periphery) to Tailstock  
Body is 8in [203mm]



CLEARANCE BEHIND BMT65 TURRET IS 2in [51mm]  
FROM TURRET FACE. MORE CLEARANCE IF RAISED ON HOLDER