



**SALES AND MARKETING
UPDATE**



HMAS

March 2025



Topics

- Products and Price List
- Video
- Tooling
- Marketing
- Did You Know...

Products and Price List Update

Products and Price List Update

- ST-40LY and ST-45LY release in all regions
- SB-28Y release in US/Canada/Mexico/Europe
- HFL-3015 release in US/Canada/Mexico
- HRT310SS-BM release in all regions
- HDC-3-5AX, VS-1/3/3-5AX releases expanded to Europe
- TL-1P and TL-2P release expanded to all regions
- QUAD AUGER-CONVEYOR option added to VF-10/40, 10/50, 11/40, 11/50, and VR-11 in all regions
- BROKEN TOOL DETECT changed from standard to optional on UMCs in all regions
- MIST CONDENSER and COOLANT MAINT PACK options added to DC-1, 1/40, 2, 2/40 in all regions
- MULTI-STAGE CLT PUMP added as standard on large lathes in all regions
- VARIABLE FLOW CLNT option removed from large lathes in all regions
- 45GAL option added on TM-0/0P/1/1P/2/2P in all regions

Products and Price List Update

- ST-40LY and ST-45LY release in all regions



ST-40LY

Starting Price: ~~US\$264,995~~

SALE • US\$251,745.25

Save 5% Now - Contact your HFO to Save Up to 15%

The ST-40LY adds Y-axis motion to our shop-proven ST-40L long-bed lathe to create a large-frame turning center with a generous work envelope and secondary milling capabilities. The addition of Y-axis motion, C-axis interpolation, and live tooling allows milling, drilling, and tapping for increased machine capabilities. This machine offers the best performance for the money – the best value – in its class.

- Extra-long work envelope
- Fully programmable servo tailstock
- 12-station base mount turret (BMT75)
- A2-8 spindle nose with 4.0" (102 mm) bar capacity
- Y-axis milling, drilling, and tapping
- ± 3.0" (76 mm) Y-axis travel
- Fully interpolated C-axis

15"
CHUCK SIZE

4.0"
BAR CAPACITY

2.4k
RPM

40 hp
POWER

Products and Price List Update

- ST-40LY and ST-45LY release in all regions



ST-45LY

Starting Price: ~~US\$290,995~~

SALE → US\$276,445.25

Save 5% Now - Contact your HFO to Save Up to 15%

The ST-45LY adds Y-axis motion to our long-bed, large-bore ST-45 to create a large-frame turning center with a generous work envelope and secondary milling capabilities. The addition of Y-axis motion, C-axis interpolation, and live tooling allows milling, drilling, and tapping for increased machine capabilities. This machine offers an excellent combination of performance, capacity, and value.

- Extra-long work envelope
- Fully programmable servo tailstock
- 12-station base mount turret (BMT75)
- A2-11 spindle nose with 7.0" (178 mm) bore
- Y-axis milling, drilling, and tapping
- ± 3.0" (76 mm) Y-axis travel
- Fully interpolated C-axis

18" (opt)
CHUCK SIZE

7.0"
BAR CAPACITY

1.4k
RPM

40 hp
POWER

- SB-28Y release in US/Canada/Mexico/Europe



SB-28Y Box Way Lathe

Starting Price: US\$129,995

The Haas SB-28Y offers the high dynamic stiffness, load-bearing capacity, and vibration damping associated with traditional box way machines, combined with the powerful, easy-to-use Haas control, and backed by the industry-leading support of the Haas Factory Outlet network.

- BMT65 turret
- Hardened and precision ground ways
- Hand-scraped Turcite-B slideways
- 30° slant-bed with 30° Y-axis wedge angle
- Compact footprint

NOTE: The SB-28Y is not compatible with the Haas Bar Feeder, and is not available with a parts catcher.

10"
CHUCK SIZE

2.95
BAR CAPACITY

3200
RPM

40 hp
POWER

COMPARE MACHINES

EXPLORE ALL INVENTORY [↗](#)

Available for order in the U.S., Canada, Mexico, and Europe, with estimated delivery Q3 2025.

Products and Price List Update

- HFL-3015 release in US/Canada/Mexico



HFL-3015 Fiber Laser

Starting Price: US\$139,995

The Haas HFL-3015 is a fully enclosed CNC fiber laser cutting machine with a 3 kW laser head and a large work area. The unit has dual work platforms that are exchanged automatically, allowing raw material and finished parts to be loaded and unloaded on one platform, while the other platform is in the machine, providing near continuous operation.

The 3 kW fiber laser cutting head is optimized to provide excellent cut quality and high efficiency, and features automatic focusing to reduce human intervention and increase accuracy. The laser easily cuts a variety of metals, including carbon steel, stainless steel, aluminum alloy, brass, copper, and even titanium alloy.

- 3 kW fiber laser
- 118" x 59" (3000 x 1500 mm) work area
- Autofocus laser head
- Dual automatic-exchange work platforms
- Full enclosure for safety and protection
- High-strength machine bed for stability
- Negative pressure dust removal system

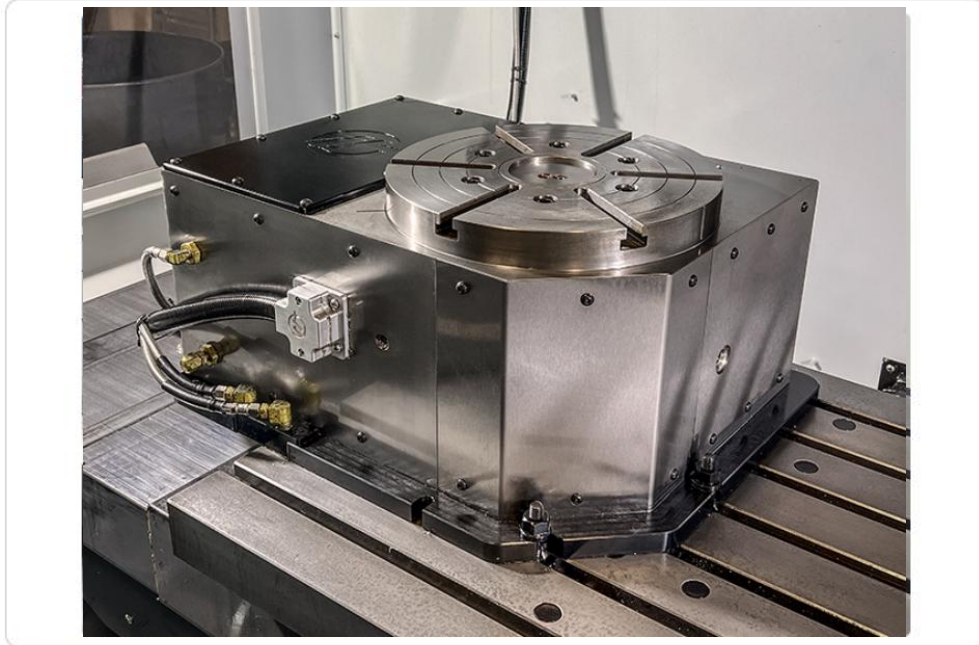
MATERIAL CUTTING RANGE

MATERIAL	SAE	METRIC
Carbon Steel	0.016" - 0.78"	0.4 - 19.8 mm
Stainless Steel	0.016" - 0.47"	0.4 - 11.9 mm
Aluminum	0.016" - 0.31"	0.4 - 7.9 mm
Brass	0.016" - 0.23"	0.4 - 5.95 mm

Available for order in the U.S., Canada, and Mexico, with estimated delivery Q3 2025.

Products and Price List Update

- HRT310SS-BM release in all regions



HRT310SS-BM

Starting Price: ~~US\$23,495~~

SALE • US\$22,320.25

Save 5% Now - Contact your HFO to Save Up to 15%

This version of our HRT310SS Super Speed rotary table is specially designed to mount on its back to provide high-speed C-axis positioning. The rotary uses a heavy-duty cycloidal drive system to provide a maximum indexing speed of 240° per second – more than three times the speed of our standard HRT310. The unit's compact size and high speed make it the perfect complement to our VF-3SS and other high-speed Haas machines.

NOTE: Requires a Haas mill with 4th-axis drive and NGC software version 100.21.000.1130 or later for full 4th-axis operation. Stand-alone operation requires a Haas rotary control box shipped after November 10, 2021, with software version 26.38 or newer.

ATTENTION! Not compatible with CHC machines, due to cycloidal gear drive.

- Modified to mount horizontally
- Add 4-axis capabilities to your machine
- High-speed 240°/sec indexing
- Heavy-duty cycloidal drive system
- Easy plug-and-play connection to Haas machines
- Industry-leading performance and capabilities

1
SPINDLES

310 mm
PLATTER SIZE

400 ft-lb
MAX TORQUE

240 °/sec
MAX SPEED

- HDC-3-5AX, VS-1/3/3-5AX releases expanded to Europe



HDC-3-5AX

Starting Price: 909.995 €

The HDC-3-5AX is a 5-axis double-column mill designed for complex, large-part machining, such as airframe components, layup molds, and composite structures. The machine's rigid construction provides a very stable cutting platform. The fully supported X-axis travels easily handle parts weighing up to 10,000 lb (4536 kg).

NOTE: The table surface consists of three blank tooling plates that are easily machined for custom fixturing. Optional T-slot plates are available.

- Dual-axis spindle head provides ± 245 degrees of C-axis rotation and ± 120 degrees of B-axis tilt
- HSK-A100 integral-motor spindle
- 50+1 side-mount tool changer
- Control pendant on moveable stand for easy access
- 153" x 49" (3886 x 1245 mm) table, with 3 blank bolt-on tooling plates for custom fixturing
- Fully supported X-axis travel
- 10,000 lb (4536 kg) part capacity

Current Lead Time [↗](#)

23 Weeks - Contact your local HFO for delivery times.

HSK-A100
TAPER

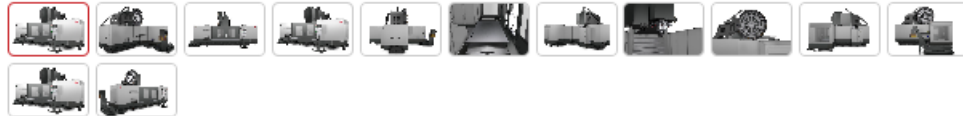
5
AXIS

6000
RPM

50+1
TOOL CAPACITY

Products and Price List Update

- VS-1/3/3-5AX releases expanded to Europe



VS-1

Starting Price: 399.995 €

The Haas VS-1 is a large-frame, bed-style machining center that provides large travels and heavy-duty cutting capacity in a vertical spindle format. The machine features a 50-taper, geared-head spindle and a 50+1 side-mount tool changer. The fully supported X-axis travels easily handle parts weighing up to 10,000 lb (4536 kg). The table surface consists of two blank tooling plates that are easily machined for custom fixturing.

NOTE: A T-slot table can be substituted for the tooling plate table at the time of order.

- 50+1 side-mount tool changer
- Fixed enclosure; does not move with the table
- 4 chip augers, with available in-tank conveyor
- Control pendant on moveable stand for easy access
- Fully supported X-axis travel
- 50 mm ballscrews on all axes
- 10,000 lb (4536 kg) part capacity
- 102" x 49" (2591 x 1245 mm) table, with 2 blank bolt-on tooling plates for custom fixturing

Current Lead Time [↗](#)
 19 Weeks - Contact your local HFO for delivery times.

50 TAPER / 3 AXIS / 7.5k RPM / 50+1 TOOL CAPACITY

Products and Price List Update

- VS-1/3/3-5AX releases expanded to Europe



VS-3

Starting Price: 499,995 €

The Haas VS-3 is a large-frame, bed-style machining center that provides large travels and heavy-duty cutting capacity in a vertical spindle format. The machine features a 50-taper, geared-head spindle and a 50+1 tool side-mount tool changer. The fully supported X-axis travels easily handle parts weighing up to 10,000 lb (4536 kg). The table surface consists of three blank tooling plates that are easily machined for custom fixturing.

NOTE: A T-slot table can be substituted for the tooling plate table at the time of order.

- 50+1 side-mount tool changer
- Fixed enclosure; does not move with the table
- 4 chip augers, with available in-tank conveyor
- Control pendant on moveable stand for easy access
- Fully supported X-axis travel
- 50 mm ballscrews on all axes
- 10,000 lb (4536 kg) part capacity
- 153" x 49" (3886 x 1245 mm) table, with 3 blank bolt-on tooling plates for custom fixturing

Current Lead Time

19 Weeks - Contact your local HFO for delivery times.

50
TAPER

3
AXIS

7.5k
RPM

50+1
TOOL CAPACITY

Products and Price List Update

- VS-1/3/3-5AX releases expanded to Europe



VS-3-5AX

Starting Price: 649.995 €

The Haas VS-3-5AX is a large-frame, bed-style machining center that provides large travels and 5-axis cutting capacity in a vertical spindle format. The machine features a 20,000-rpm HSK-A63 spindle and a 70+1 tool side-mount tool changer.

The Haas-built dual-axis head supports the spindle from both sides for rigidity, and has powerful brakes on both axes for accurate 3+2 machining. The rotary head provides ± 245 degrees of C-axis rotation and ± 120 degrees of B-axis tilt to reach nearly any angle.

The fully supported X-axis travels easily handle parts weighing up to 10,000 lb (4536 kg). The table surface consists of three blank tooling plates that are easily machined for custom fixturing.

NOTE: A T-slot table can be substituted for the tooling plate table at the time of order.

- Haas-built dual-axis head supports the spindle on both sides for rigidity
- ± 245 degrees of C-axis rotation and ± 120 degrees of B-axis tilt
- Powerful brakes on the B and C axes for accurate 3+2 machining
- 70+1 side-mount tool changer
- Control pendant on moveable stand for easy access
- Fully supported X-axis travel w/ 10,000 lb (4536 kg) part capacity
- 50 mm ballscrews on all axes
- 153" x 49" (3886 x 1245 mm) table, with 3 blank bolt-on tooling plates for custom fixturing

HSK-A63
TAPER

5
AXIS

20k
RPM

70+1
TOOL CAPACITY

Products and Price List Update

- TL-1P and TL-2P release expanded to all regions



TL-1P Production Toolroom Lathe

Bring production capabilities to your toolroom with the Haas TL-P Series Toolroom Lathes. We've taken our shop-proven TL-1 and added a 6.5" (165 mm) power chuck with hydraulic closer, a 4-station automatic tool turret, and a 3000-rpm A2-5 spindle to create a production-ready machine for any shop.

The machine's compact footprint, standard Visual Programming System, and ability to run on single-phase power make the TL-1P perfect for shops needing a last- or second-op machine, toolrooms, schools, and garage machinists.

NOTE: The hydraulic closer is a pull-to-clamp system, or OD clamping only.

- 8" x 30" (203 x 762 mm) max capacity
- 6.5" (165 mm) power chuck with hydraulic closer
- 4-station automatic tool turret
- 3000-rpm A2-5 spindle
- Haas Visual Programming System

NOTE: Single-phase operation is not available in Europe.

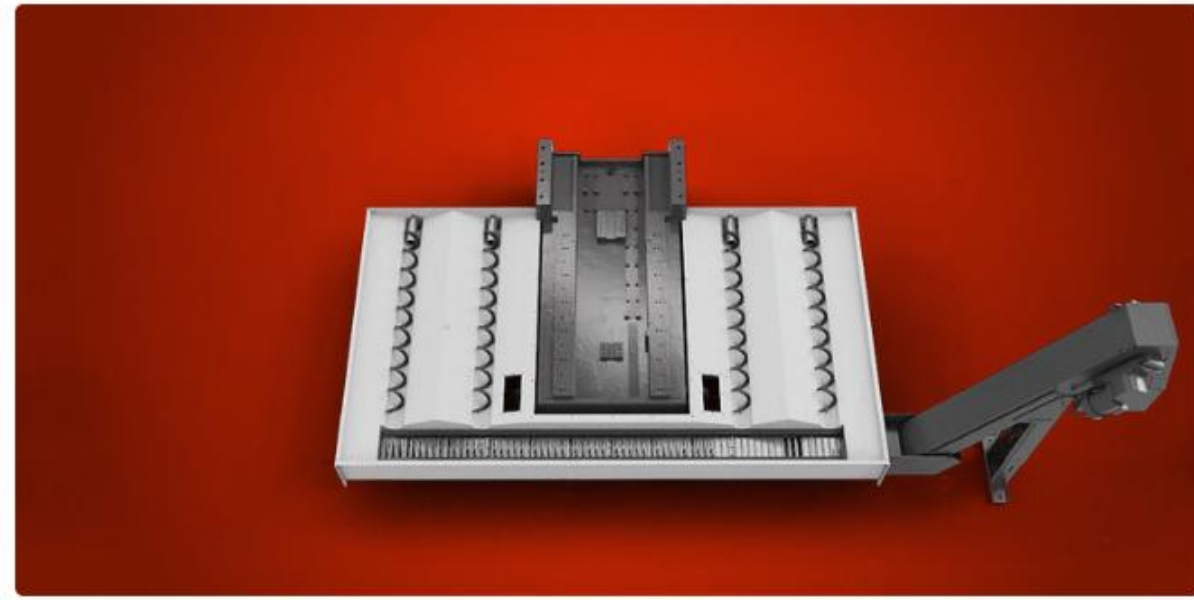
6.5"
CHUCK SIZE

3k
RPM

10 hp
POWER

Products and Price List Update

- QUAD AUGER-CONVEYOR option added to VF-10/40, 10/50, 11/40, 11/50, and VR-11 in all regions



Quad-Auger System w/Conveyor

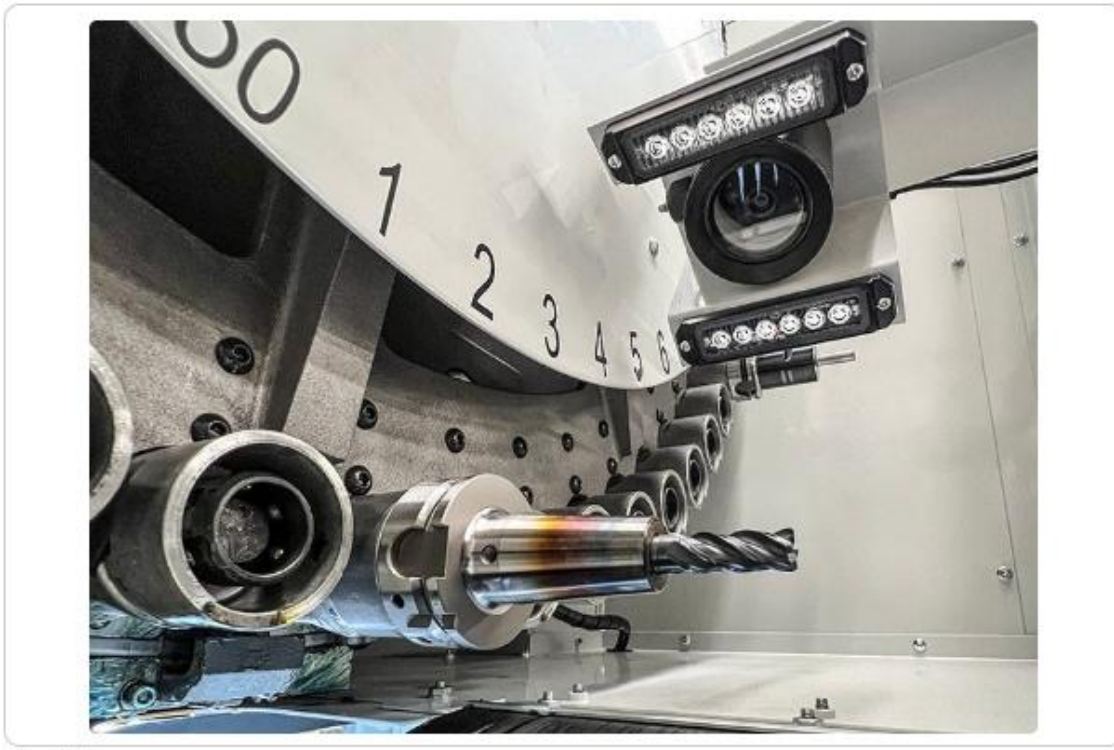
Conveyor can discharge chips to either side

The Quad-Auger Chip Removal System with Conveyor removes chips from the machine quickly, with minimal coolant carryout. Four side augers transport the chips to the front of the pan, where they are collected by a heavy-duty steel, belt-type chip conveyor, and discharged at standard industrial barrel height.

64" Machines - \$22,495 | 84" Machines - \$24,995 | 120" Machines – \$29,995

Products and Price List Update

- BROKEN TOOL DETECT changed from standard to optional on UMCs in all regions



Broken Tool Detection



- Available on all UMCs*
- Safely stops the machine if a broken tool is detected
- Saves money by preventing damage to tooling, workholding, and possibly the machine

*Except the UMC-350HD-EDU.

The Haas Broken Tool Detection system uses a built-in camera to visually compare tools before and after a tool change, to determine if the tool was damaged during machining. If a broken tool is detected, the machine generates an alarm, and prevents the tool from being swapped into the spindle.

* Included as Option on UMC-400s in April

Products and Price List Update

- MIST CONDENSER and COOLANT MAINT PACK options added to DC-1, 1/40, 2, 2/40 in all regions



**COOLANT MIST
CONDENSER**

US\$29/mo

[▶ WATCH VIDEO](#) **5% OFF** • US\$2,655.25
> ~~US\$2,795~~



**COOLANT
MAINTENANCE
PACKAGE**

US\$39/mo

[▶ WATCH VIDEO](#) **5% OFF** • US\$3,605.25
> ~~US\$3,795~~



Products and Price List Update

- MULTI-STAGE CLT PUMP added as standard on large lathes in all regions



Multi-Stage Coolant Pump

Standard on some models

More flow, more pressure, less noise



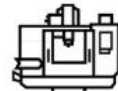
OPTION INFO



OVERVIEW



SERVICE DOCUMENTS




AVAILABLE ON THESE MACHINES


- VARIABLE FLOW CLNT option removed from large lathes in all regions

Products and Price List Update


- MULTI-STAGE CLT PUMP added as standard on large lathes in all regions



OVERVIEW



SERVICE DOCUMENTS



AVAILABLE ON THESE MACHINES

Our multi-stage coolant pump uses a series of stacked impellers to provide more flow and higher pressure than the single-stage coolant pump, while offering much quieter operation.

- ✓ Quieter than the single-stage pump
- ✓ Built-in filter screen on the pickup tube
- ✓ 1.5 hp (1.1 kW) pump
- ✓ Higher flow and pressure

	SAE	METRIC
Power	1.5 hp	1.1 kW
Flow Rate 60Hz	16 gpm @ 70 psi	61 L/min @ 4.8 bar
Pressure 60Hz (outlet)	70 psi	4.8 bar
Pressure 60Hz (spindle)	40 psi	2.8 bar
Deadhead Pressure 60Hz	130 psi	9 bar
Flow Rate 50Hz	14 gpm @ 50 psi	53 L/min @ 3.4 bar
Pressure 50Hz (outlet)	50 psi	3.4 bar
Pressure 50Hz (spindle)	30 psi	2.1 bar
Deadhead Pressure 50Hz	95 psi	6.6 bar

Products and Price List Update

- 45GAL option added on TM-0/0P/1/1P/2/2P in all regions



45-Gallon Coolant Tank

\$1,995

The standard coolant system for Mini Mill series machines

Video Update

Video Update

Recently Released Videos

- The Essential Macro Video - Intro to CNC Macros and Subprograms
https://www.youtube.com/watch?v=ZLW_MX5_NIM
- Grip Your Parts Better with a Dovetail -
<https://www.youtube.com/watch?v=gThxr3Hzg9w>
- Peace of Mind on Long Run Jobs - Broken Tool Detection Option -
<https://www.youtube.com/watch?v=IRL7q5ENxEI>
- Calibrate Your Probe System Faster - Probe Calibration Kits -
<https://www.youtube.com/watch?v=fjqKzSQh8zE>
- Lifting Magnets Now Available at HaasTooling.com -
<https://www.youtube.com/watch?v=YfMQRpj0Pj8>
- Hold Round Parts More Easily On Your Mill - 8" Chuck & Adapter Plate Kit -
<https://www.youtube.com/watch?v=YGAzWbzilms>
- Pull Bars on Your Lathe! New Haas Bar Pullers Available Now at HaasTooling.com
<https://www.youtube.com/watch?v=1T0HwMQFkSU>

Video Update

Recently Released Videos

- The Essential Macro Video - Intro to CNC Macros and Subprograms - Haas Tip of the Day - https://www.youtube.com/watch?v=ZLW_MX5_NIM

Tip of the Day Video

- Using Macros to Build Efficiency
- Detailed Look at Macros
- Understanding the Unknown
- Great Educational Video
- Check it out
- Share with your Advanced Users



Video Update

Recently Released Videos

- Grip Your Parts Better with a Dovetail -
<https://www.youtube.com/watch?v=gThxr3Hzg9w>

Haas Tooling Video

- Dovetails are Awesome!
- Take your workholding to the next level
- Alex shares Best Practices
- Check it out
- Share it



Video Update

Recently Released Videos

- Peace of Mind on Long Run Jobs - Broken Tool Detection Option - <https://www.youtube.com/watch?v=IRL7q5ENxEI>

Option Spotlight

- Benefits of Broken Tool Detection
- Great Feature for Automation
- How to Video
- Check it out and learn



Video Update

Recently Released Videos

- Calibrate Your Probe System Faster - Probe Calibration Kits - <https://www.youtube.com/watch?v=fjqKzSQh8zE>

Haas Tooling Video

- Probe Calibration Kits
- Speed up your Process
- How to Instructions
- Great Value
- Check it out
- Share it



Video Update

Recently Released Videos

- Lifting Magnets Now Available at HaasTooling.com - <https://www.youtube.com/watch?v=YfMQRPj0Pj8>

Haas Tooling Video

- 3 Sizes Available
- Proper How to instructions
- Check it out!



Video Update

Recently Released Videos

- Hold Round Parts More Easily On Your Mill - 8" Chuck & Adapter Plate Kit - <https://www.youtube.com/watch?v=YGAzWbzilms>

Haas Tooling Video

- Short 2:41
- Affordable Solutions to Common Applications
- Check it out



Video Update

Recently Released Videos

- Pull Bars on Your Lathe! New Haas Bar Pullers Available Now at HaasTooling.com
<https://www.youtube.com/watch?v=1T0HwMQFkSU>

Haas Tooling Video

- Affordable Automation
- Specifics on...
- How to Order
- How to Set up
- How to Use
- VPS Template Download
- Tips & Tricks
- Best Practices
- Thank you Bhop!



Tooling Update

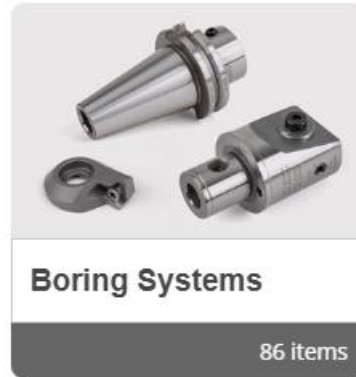
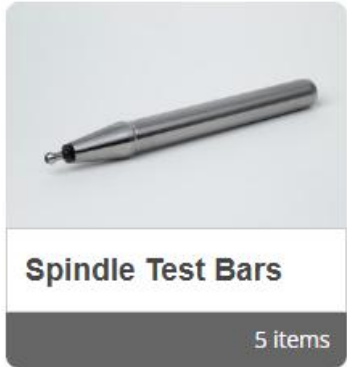


WINNER'S CIRCLE Update

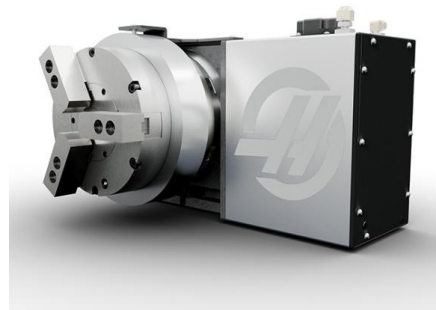
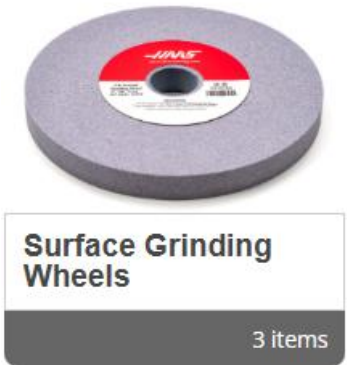
Still On Sale - Only \$49 – 50% off the already reduced price

Over 10,000 Subscriptions and Growing

Tooling Update, Global Except Europe & China



+70 Items



- 30,50,HSK Taper Spindle Test Bar
- V-Groove Vise Jaws
- Mill Boring System Holders
- Surface Grinding Wheel
- Rotary Fixture Key for DC-1
- Toolholder Sleeve
- 3-Jaw Air Chuck and Adapter Kit for HRT210 Rotary
- Surplus Parts (4 Parts)



WINNER'S CIRCLE Update

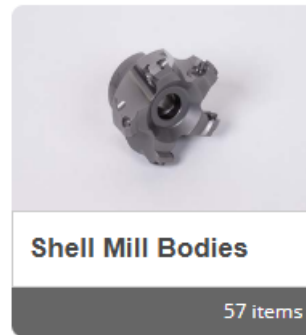
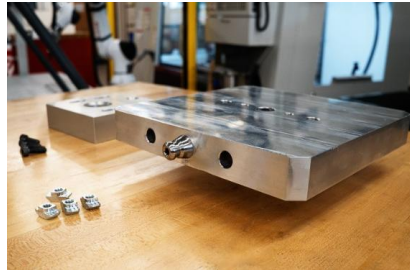
Still On Sale - Only €49 – 50% off the already reduced price

Over 10,000 Subscriptions and Growing

HAE - Tooling Update



+45 Items



Shell Mill Bodies

57 items

- Haas Performance Tool Presetter (HPTS600)
- Fiber Laser Marking Machine
- V-Groove Vise Jaws
- Haas Robot Pallet Loading System Expansion Kit
- Shell Mill Body, Metric

Marketing Update

UP TO **15% OFF!**

Spring
INTO
AUTOMATION

HAAS / Haas F1 Team

MACHINES **OPTIONS** **AUTOMATION**

LEARN MORE

This banner features a large yellow starburst shape on a light blue background. The text 'Spring INTO AUTOMATION' is prominently displayed, with 'Spring' in a script font and 'INTO AUTOMATION' in bold block letters. A red starburst contains the text 'UP TO 15% OFF!'. Below the main text are the Haas and Haas F1 Team logos. At the bottom, three icons represent 'MACHINES', 'OPTIONS', and 'AUTOMATION', each with a corresponding 'LEARN MORE' button.

HAAS TOOLING.COM

March Mania

Up To **45% OFF SALE**

ON SELECT
High-Quality
Haas Tools

FREE
NEXT-DAY
DELIVERY
FOR 1-YEAR

Sign up for
WINNER'S
CIRCLE
\$49 (\$95)

SHOP HAAS TOOLING

This banner has a dark, starry background with a red arrow pointing right containing the text 'HAAS TOOLING.COM'. The main headline 'March Mania' is in a large, bold, italicized font. Below it, a yellow banner reads 'Up To 45% OFF SALE'. Further down, it says 'ON SELECT High-Quality Haas Tools'. To the right, a white box highlights 'FREE NEXT-DAY DELIVERY FOR 1-YEAR' and 'Sign up for WINNER'S CIRCLE \$49 (\$95)'. At the bottom, there is a 'SHOP HAAS TOOLING' button. Various tool icons are scattered throughout the design.

Marketing Update

UMC-500 SAVINGS EXAMPLE



UMC-500

- 10,000-rpm Spindle
- Through-Spindle Coolant
- Belt-Type Chip Conveyor
- Programmable Coolant Nozzle

SALE PRICE: \$156,441
 Save: \$8,234
 Retail Price: \$164,675

\$1,423/Month

Increase Options to \$25K+ for a lower monthly rate

[View Details | Get Quote](#)



UMC-500

+ \$25K IN OPTIONS

- 10,000-rpm Spindle
- Through-Spindle Coolant
- Belt-Type Chip Conveyor
- Programmable Coolant Nozzle
- Through-Tool Air Blast

SALE PRICE: \$149,553
 Save: \$16,617
 Retail Price: \$166,170

\$1,360/Month

Add a RPL-25KG for just +\$736/month

[View Details | Get Quote](#)



UMC-500

+ \$25K IN OPTIONS

+ ROBOTIC PALLET LOADER-25KG

- 10,000-rpm Spindle
- Through-Spindle Coolant
- Belt-Type Chip Conveyor
- Programmable Coolant Nozzle
- Through-Tool Air Blast
- Robotic Pallet Loader-25KG

SALE PRICE: \$230,490
 Save: \$40,675
 Retail Price: \$271,165

\$2,096/Month

Complete Automation and Option package for less than \$2,500/month!

[View Details | Get Quote](#)

Submitted by [mpowell](#) on Mon, 2025-03-10 14:37

The 'Spring into Automation' promotion is live on the Haas website. Landing page URLs explaining details about this promotion and a link to the marketing campaigns page are below. The 'Spring into Automation' PC codes are now live in HST and ready to use. PC code numbers and discount details are below.

If any issues are encountered when applying these PC codes in HST, please e-mail Hst_Mo@haascnc.com.

PC code details

- PC-1345: 5% (4% Haas/1% HFO) off all machines, rotaries, bar feeders, APLs, robots, and cobots
- PC-1346: 10% (8.5% Haas/1.5% HFO) off all machine orders when a rotary, bar feeder, APL, pallet pool, robot, or cobot • are on the order
- PC-1347: 10% (8.5% Haas/1.5% HFO) off all machine orders when at least \$25,000 in options are on the order
- PC-1348: 15% (12.5% Haas/2.5% HFO) off all machine orders with \$25,000 in options and a rotary, bar feeder, APL, pallet pool, robot, or cobot on the order
- All above discounts apply to the entire order including all options, rotaries, robots, APLs, barfeeders, and tooling
- All above discounts exclude Desktop, EDU, TM, TL, HDC, VS, SR, HAB, HSG, HKM
- Valid for US, Canada, and Europe until March 31, 2025

Marketing Update

NO MODEL RESTRICTIONS

UP TO
6-MONTH SKIP
 AVAILABLE

NO PRE-PAYMENT PENALTIES EVER!

INSANE FINANCING FOR YOUR NEXT HAAS CNC

DOWN PAYMENT	CHOOSE YOUR TERM						
	12-MONTHS	24-MONTHS	36-MONTHS	48-MONTHS	60-MONTHS	72-MONTHS	84-MONTHS
10% DOWN	0.00%	0.00%	0.00%	0.99%	2.49%	2.99%	3.49%
20% DOWN	0.00%	0.00%	0.00%	0.00%	1.99%	2.49%	2.99%
30% DOWN	0.00%	0.00%	0.00%	0.00%	1.00%	1.99%	2.49%
20% DOWN + 3-MO SKIP	0.00%	0.49%	0.99%	1.49%	2.99%	3.49%	3.99%
20% DOWN + 6-MO SKIP	0.99%	1.49%	1.99%	2.49%	3.99%	4.49%	4.99%

APPLY FOR FINANCING TODAY

* Financing Terms, Conditions, and Exceptions: References are to an implied interest rate under a conditional sales contract. Interest accrues during the skip period. Down payment, rate, and terms of financing are dependent upon credit approval. Eligible businesses should have three or more years of operation under current ownership. U.S. and Canada only. All programs are 10% - 30% down. Must put a minimum of 20% down to get no payments for 6 months. **Certain equipment (e.g., stand-alone Rotaries, Shop Equipment, Bar Feeders, etc.) are subject to different rates, terms, and down-payment requirements, unless financed with a machine.** No prepayment penalty on any program. Not responsible for misprints or typographical errors. Offer valid on new machine orders placed from March 1 through March 31, 2025.

Marketing Tools

View Edit Track Devel

*** All images are clickable ***



MARKETING CAMPAIGNS

[HAAS TOOLING HOME PAGE](#)

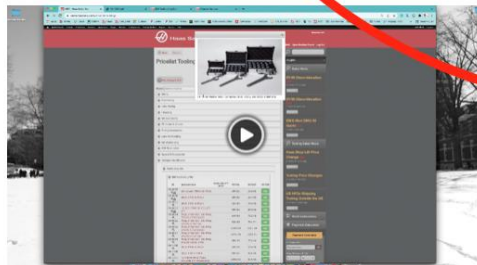
[Haas Tooling Promo page](#)

[How to redeem Online Tooling Promos](#)

[2025 AVAILABLE DIGITAL MARKETING CAMPAIGNS and MODEL GUIDES, PDFs, CATALOGS](#)

*Check Marketing Campaign page for info about HFO Demo Day.

[Tooling Kits Explained \(08/PCK/EK\)](#)



HFO DEMO DAY *2025!

DEMO DAY 2025 THEME: "More Than..."

We are promoting this upcoming Demo Day with the theme of: **"More Than..."**

- ✔ More than CNC, ✔ More than Tooling, ✔ More than Workholding,
- ✔ More than Shop Support, ✔ More than Robots, ✔ More than Automation,
- ✔ More than Rotary, ✔ More than...

HFOs will be presenting these "More than..." topics, but they can choose which specific machines and Haas Tooling items to display that best suit their markets and customers. Customers should walk away from Demo Day with a clear understanding that Haas and their HFO are about more than just machines and are their supplier of choice for all their machine shop needs.

Updated Graphics coming soon!

Fill out the survey below to start the process of getting marketing materials created for your Demo Day. You must submit the survey a minimum of 2 months before your event. *(If you have a non-Demo Day event, please fill out the survey for HFO EVENTS.)*

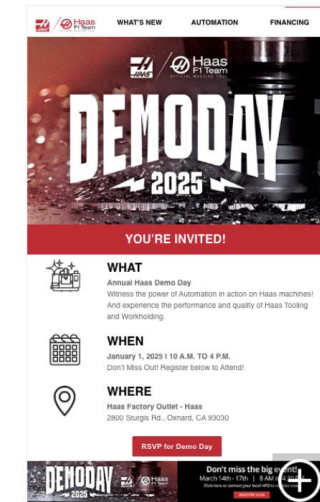
Date updated: Jan 2025

[DEMO DAY SURVEY](#)

[LANDING PAGE TEMPLATE](#)

A survey will be created to collect T-shirt orders. If your Demo Day is scheduled before the survey is available, please email HFOEmailSupport@HaasCNC.com.

Email ↓



Marketing Campaign Update

2025 AVAILABLE DIGITAL MARKETING CAMPAIGNS + MODEL GUIDES/PDFS/CATALOGS

These campaigns will be running throughout 2025. Email HFOEmailSupport@haascnc.com if you want to have Haas email your customer base regarding any of the below campaigns.

CURRENT LIVE MARKETING CAMPAIGNS

NEW Marketing Campaigns added

- **Box Way Lathe *NEW**
- **HFL-3015 Fiber Laser *NEW**
- **DMs/DTs *NEW**
- **Hot Deals on In-Stock Machines *NEW**
- **Financing Rates *NEW**
- **SR-3015 Sheet Router *NEW**
- **HFO Demo Day *NEW**
- **DC-Series *NEW**

On Going Marketing Campaigns Available

- EU Models *(update coming soon)*
- Mini Mill Redesign
- Rotaries
- Customer Testimonials
- Showroom Machines/Local Inventory

- Haas Makes It Easy
- Why Haas
- First-Time Buyers
- Small Footprint
- Affordable Machines

TOOLING MARKETING CAMPAIGNS

- **Haas Cobot *NEW**
- Benefits of Haas Tooling
- Haas Workholding by Kurt
- Ready2Run
- Ready2Machine

PROMOTIONS

NEW PRODUCTS

GENERAL & MACHINE

TOOLING

PDFS AND BROCHURES

NEW PRODUCT MARKETING CAMPAIGNS

- ✓ Band Saw
- ✓ Air Compressor
- ✓ Laser Marker
- ✓ CMM
- ✓ Surface Grinder

- ✓ Knee Mill
- ✓ UMC-400/SS
- ✓ DMs/DTs
- ✓ TL-P
- ✓ ST-40 Updates (short/long/Y-axis)

- ✓ DC Series
- ✓ SB Series
- ✓ SR-3015 and SR-3015P Sheet Router
- ✓ Robotic Pallet Loader
- ✓ Mini Max
- ✓ HFL-3015 Fiber Laser

***More New Machines Coming Soon!**



Haas F1 Team
OFFICIAL MACHINE TOOL

ALL NEW

SB-28Y BOX WAY LATHE

Y-AXIS CNC BOX WAY LATHE WITH 12" X 18.5" MAX CAPACITY, A2-8, AND 2.95" BAR CAPACITY

Haas SB Series lathes offer the high dynamic stiffness, load-bearing capacity, and vibration damping associated with traditional box way machines, combined with the powerful, easy-to-use Haas control, and backed by the industry-leading support of the Haas Factory Outlet network.

STARTING AT:
\$129,995

Specifications subject to change without notice. Not responsible for typographical errors. Machines shown with optional equipment. Actual product appearance may differ. Pricing subject to change without notice.

BY THE NUMBERS

- A2-8** SPINDLE
- 10"** CHUCK SIZE
- 3200** RPM
- 40** HP
- 12" x 18.5"** MAX CAPACITY (DIA. x LENGTH)
- 2.95"** BAR CAPACITY

BOX WAY CONSTRUCTION

- Hardened and precision ground ways
- Flame and induction hardened slide surfaces
- Hand-scraped Turcite-B slideways on the X and Y axes, and tailstock gib

Our SB Series boxway lathes are equipped with the same powerful, easy-to-use Haas Control found on every machine we build. Designed and built in-house – hardware and software – the Haas control is optimized specifically for Haas machine tools. It comes standard on every machine we sell, and is the same across the entire product line.

30° SLANT-BED BASE CASTING WITH 30° Y-AXIS ANGLE FOR 60° TOTAL

All SB Series box way lathes feature a true slant bed design that provides excellent rigidity and thermal stability, as well as efficient chip evacuation. The slant bed also allows generous X-axis travel in a smaller footprint, and provides a sturdy base to support the turret along the entire Z-axis.



Haas F1 Team
OFFICIAL MACHINE TOOL

You Asked, We Delivered: CNC Box Way Lathes for Heavy Turning.

10" CHUCK SIZE **2.95" BAR CAPACITY** **3200 RPM** **40 HP**

Haas F1 Team
OFFICIAL MACHINE TOOL

THE NEW HAAS HFL-3015 FIBER LASER CUTTER

5118 IPM MAX SPEED **1543 LB** MAX LOAD

- 3 kW fiber laser
- Autofocus laser head
- 120" x 60" (3050 x 1530 mm) work area
- Dual automatic-exchange work platforms
- Full enclosure for safety and protection
- High-strength machine bed for stability
- Negative pressure dust removal system

HFL-3015 MATERIAL CUTTING RANGE

MATERIAL	SAE	Metric
Carbon Steel	0.016" - 0.78"	0.4 - 19.8 mm
Stainless Steel	0.016" - 0.47"	0.4 - 11.9 mm
Aluminum	0.016" - 0.31"	0.4 - 7.9 mm
Brass	0.016" - 0.23"	0.4 - 5.95 mm

FULLY OPTIMIZED The 3 kW fiber laser cutting head is optimized to provide excellent cut quality and high efficiency, and features automatic focusing to reduce human intervention and increase accuracy. The laser easily cuts a variety of metals, including carbon steel, stainless steel, aluminum alloy, brass, copper, and even titanium alloy.


MAXIMUM EFFICIENCY The HFL-3015 has dual work platforms that are exchanged automatically, allowing raw material and finished parts to be loaded and unloaded on one platform, while the other platform is in the machine, providing near continuous operation.

HFL-3015 FIBER LASER CUTTER is a fully enclosed 3 kW CNC fiber laser cutting machine with a high-speed sensor head and a large work area.

IS HERE!

STARTING AT:
\$139,995

Specifications subject to change without notice. Not responsible for typographical errors. Machines shown with optional equipment. Actual product appearance may differ. Pricing subject to change without notice.



Haas F1 Team
OFFICIAL MACHINE TOOL

You Asked, We Delivered: Fiber Laser Cutting Accuracy.

5118 IPM MAX SPEED **1543 LB** MAX LOAD

Haas F1 Team
OFFICIAL MACHINE TOOL

THE NEW HAAS HFL-3015 FIBER LASER CUTTER

5118 IPM MAX SPEED **1543 LB** MAX LOAD

- 3 kW fiber laser
- Autofocus laser head
- 120" x 60" (3050 x 1530 mm) work area
- Dual automatic-exchange work platforms
- Full enclosure for safety and protection
- High-strength machine bed for stability
- Negative pressure dust removal system

HFL-3015 MATERIAL CUTTING RANGE

MATERIAL	SAE	Metric
Carbon Steel	0.016" - 0.78"	0.4 - 19.8 mm
Stainless Steel	0.016" - 0.47"	0.4 - 11.9 mm
Aluminum	0.016" - 0.31"	0.4 - 7.9 mm
Brass	0.016" - 0.23"	0.4 - 5.95 mm

FULLY OPTIMIZED The 3 kW fiber laser cutting head is optimized to provide excellent cut quality and high efficiency, and features automatic focusing to reduce human intervention and increase accuracy. The laser easily cuts a variety of metals, including carbon steel, stainless steel, aluminum alloy, brass, copper, and even titanium alloy.

MAXIMUM EFFICIENCY The HFL-3015 has dual work platforms that are exchanged automatically, allowing raw material and finished parts to be loaded and unloaded on one platform, while the other platform is in the machine, providing near continuous operation.

HFL-3015 FIBER LASER CUTTER is a fully enclosed 3 kW CNC fiber laser cutting machine with a high-speed sensor head and a large work area.

IS HERE!

STARTING AT:
\$139,995

Specifications subject to change without notice. Not responsible for typographical errors. Machines shown with optional equipment. Actual product appearance may differ. Pricing subject to change without notice.

HAE Marketing Update

SPRING SALE!
GET UP TO 15% OFF YOUR ENTIRE ORDER



-15%

-5%

-5%

-5%

LEARN MORE



HAAS TOOLING.COM

March Mania

Up To **45% OFF SALE**

ON SELECT High-Quality Haas Tools

FREE EXPRESS DELIVERY FOR 1-YEAR
Sign up for WINNER'S CIRCLE
49€ (95€)

SHOP HAAS TOOLING

Machines Configured Exclusively for Europe

EU SERIES: UP TO 34% OFF

MORE CHOICES, MORE VALUE - JUST FOR EUROPE

LEARN MORE

[Special-Series/eu_series_redirect.html](#)

HAE Marketing Update

VF-2 SAVINGS EXAMPLE



VF-2

- Wireless Intuitive Probing System
- Chip Auger

SALE PRICE: € 63.826

Save: € 3.359

Retail Price: € 67.185

Increase Options to € 25K+ to get -10%

[View Details | Get Quote](#)



VF-2

+ € 25K IN OPTIONS

- 30+1 Side-Mount Tool Changer
- Through-Spindle Coolant
- Wireless Intuitive Probing System
- Chip Auger
- Programmable Coolant Nozzle

SALE PRICE: € 75.483

Save: € 8.387

Retail Price: € 83.870

Add a 10 kg Cobot Package to get -15%

[View Details | Get Quote](#)



VF-2

+ € 25K IN OPTIONS

+ 10 KG COBOT PACKAGE

- 10 kg Cobot Package
- 30+1 Side-Mount Tool Changer
- Through-Spindle Coolant
- Wireless Intuitive Probing System
- Chip Auger
- Programmable Coolant Nozzle

SALE PRICE: € 96.870

Save: € 17.095

Retail Price: € 113.965

Complete Automation and Option package!

[View Details | Get Quote](#)

INSANE FINANCING FOR YOUR NEXT HAAS CNC

DOWN PAYMENT	CHOOSE YOUR TERM						
	12-MONTHS	24-MONTHS	36-MONTHS	48-MONTHS	60-MONTHS	72-MONTHS	84-MONTHS
10% DOWN	0.00%	0.00%	0.00%	0.99%	2.49%	2.99%	3.49%
20% DOWN	0.00%	0.00%	0.00%	0.00%	1.99%	2.49%	2.99%
30% DOWN	0.00%	0.00%	0.00%	0.00%	1.00%	1.99%	2.49%
20% DOWN + 3-MO SKIP	0.00%	0.49%	0.99%	1.49%	2.99%	3.49%	3.99%
20% DOWN + 6-MO SKIP	0.99%	1.49%	1.99%	2.49%	3.99%	4.49%	4.99%

*Financing terms, conditions, and exceptions: valid in Denmark, Germany, France, Spain, Portugal, Belgium, Luxembourg, Estonia, Latvia, Lithuania, Czech Republic, Slovenia, Slovakia, and Greece only. References are to an implied interest rate under a conditional sales contract. Interest accrues during the skip period. Down payment, rate, and terms of financing are dependent upon credit approval. Eligible businesses should have three or more years of operation under current ownership. All programs are 10% - 30% down. Must put a minimum of 20% down to get no payments for 6 months. **Certain equipment (e.g., stand-alone Rotaries, Shop Equipment, Bar Feeders, etc.) are subject to different rates, terms, and down-payment requirements, unless financed with a machine.** No prepayment penalty on any program.
 Offer valid on new machine orders placed from 1 March 2025 - 31 March 2025.

Did You Know...

Did You Know...

- **19" Monitor and Color Update**
 - Phasing in, **start month listed below for production**
- February
 - UMC-400/500, ST-30/35, DS-30Y, SR-3015P, DT-3, DM-3, SB-28Y, ST-40LY, GM-1
- March
 - UMC-750, VF-3/4/5, VR-5, VP-5, VM-3
- April
 - VF-1/2, VM-2
- May
 - UMC-1000/1250/1500, VF-6 to VF-14, ST-10 to ST-55, VR, VM
- June
 - DT, DM, EC, GM, HDC, VC, VS
- July
 - GR, GM, TM, TL, MM, CM, CL, Desktop, SR, Simulators



Did You Know...

- **Stainless Way Covers**

- Phasing in, start month listed below for production

- Now Standard on:

- All VF, VM, VR
- ST-40Ys
- MM
- ST-20, 30L, 40
- CM/CL

- Coming soon:

- Apr - ECs
- May – ST-10/30
- TBD – DT/DM






TL-P Series Drawbar

SPINDLE	S.A.E	METRIC
Spindle Nose	A2-5	A2-5
Drive System	Direct Speed, Belt Drive	Direct Speed, Belt Drive
Max Rating	10.0 hp	7.5 kW
Max Speed	3000 rpm	3000 rpm
Max Torque	108.0 ft-lbf @ 355 rpm	146.0 Nm @ 355 rpm
Chuck Throat	Ø 1.81 in x 3.10 in DEEP	Ø 46.0 mm x 78.7 mm DEEP
Drawbar Bore (NON-THROUGH)	Ø 1.03 in x 4.91 in DEEP	Ø 26.2 mm x 124.7 mm DEEP
Spindle Bore (without chuck and drawbar installed)	2.30 in	58.4 mm

DC 40 Taper Series

DC-1/40

 Price List	 Specs	 Image		
--	--	---	--	--

BASE	\$ 49,995	OPTIONS	\$ 0	TOTAL	\$ 49,995
-------------	------------------	----------------	-------------	--------------	------------------

High-Speed Drill Center with 23.6" x 17.7" x 13" (600 x 450 x 330 mm) travels, 40 taper

Tooling Taper (BT/CT)

CT	<i>CT or SK (No BT Option)</i>	Required
CT option		

- Factory Training Dates for 2025
 - June 18/19
 - September 10/11
 - December 3/4

Please email Scott Gasich directly with any names, email addresses and job functions for those who will be attending



THANK YOU!
FOR ALL YOUR EFFORTS



HMAS

