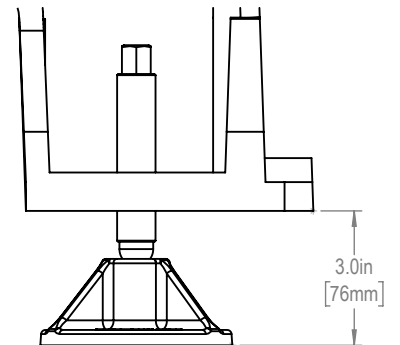
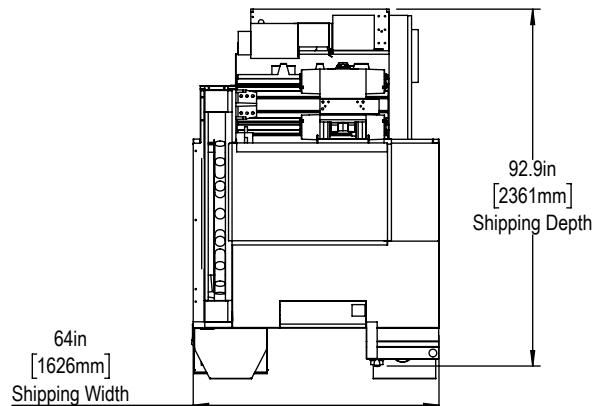
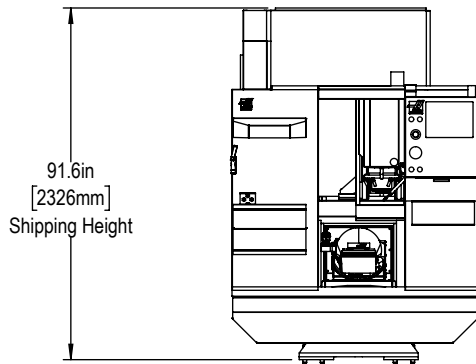


Leveling Pad Height

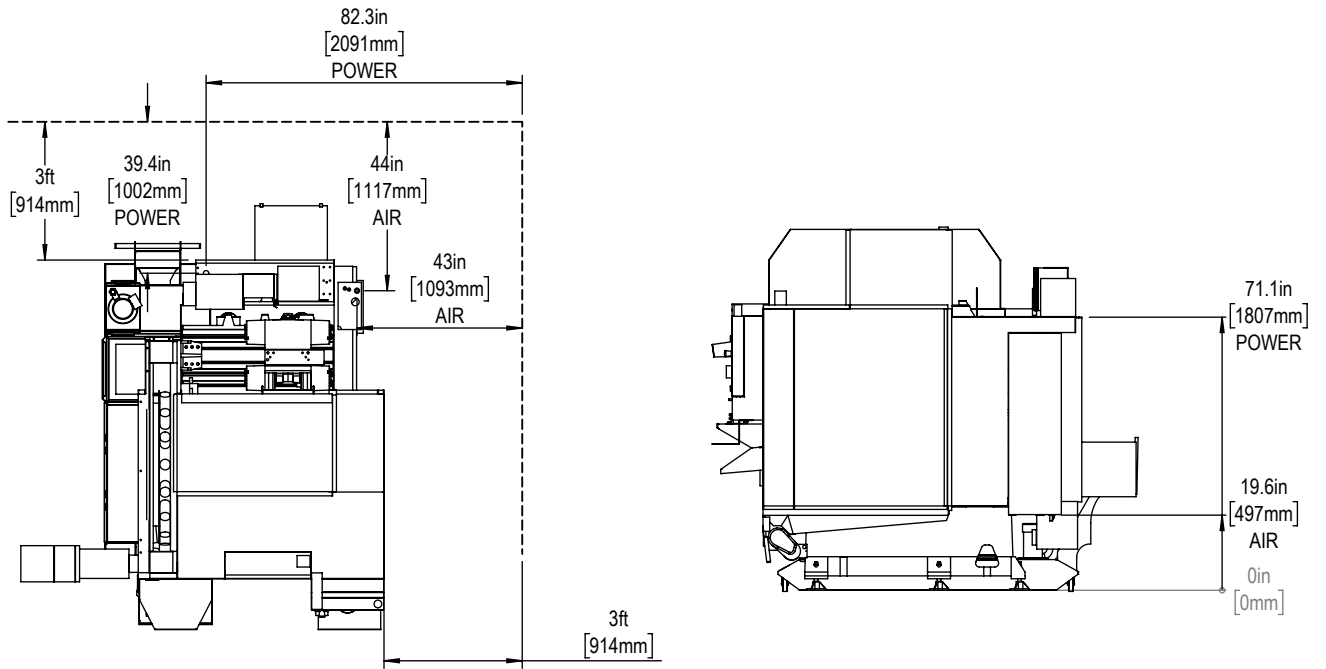


*All Height Dimensions Based on Suggested Leveling Pad Height

Shipping Dimensions



Air & Power

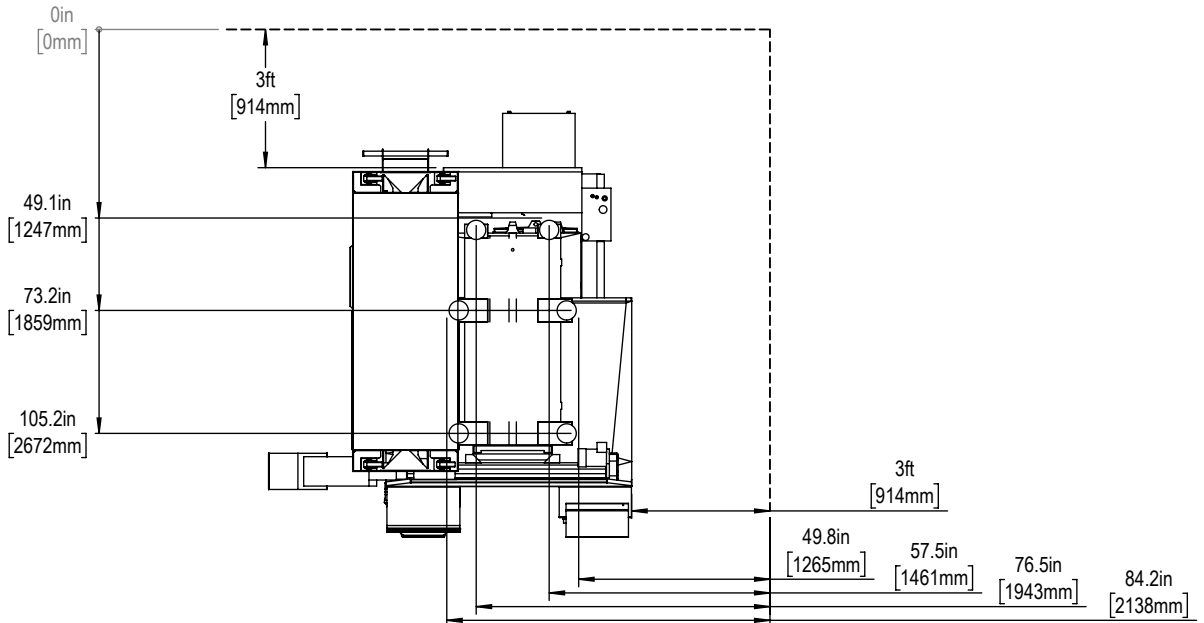


Maintain 3 feet [915mm] clearance to the nearest obstruction around all sides of machine perimeter for maintenance access

Note:

Machine must be placed on one continous concrete slab. Slab should extend 12in [305mm] beyond anchor holes in all directions

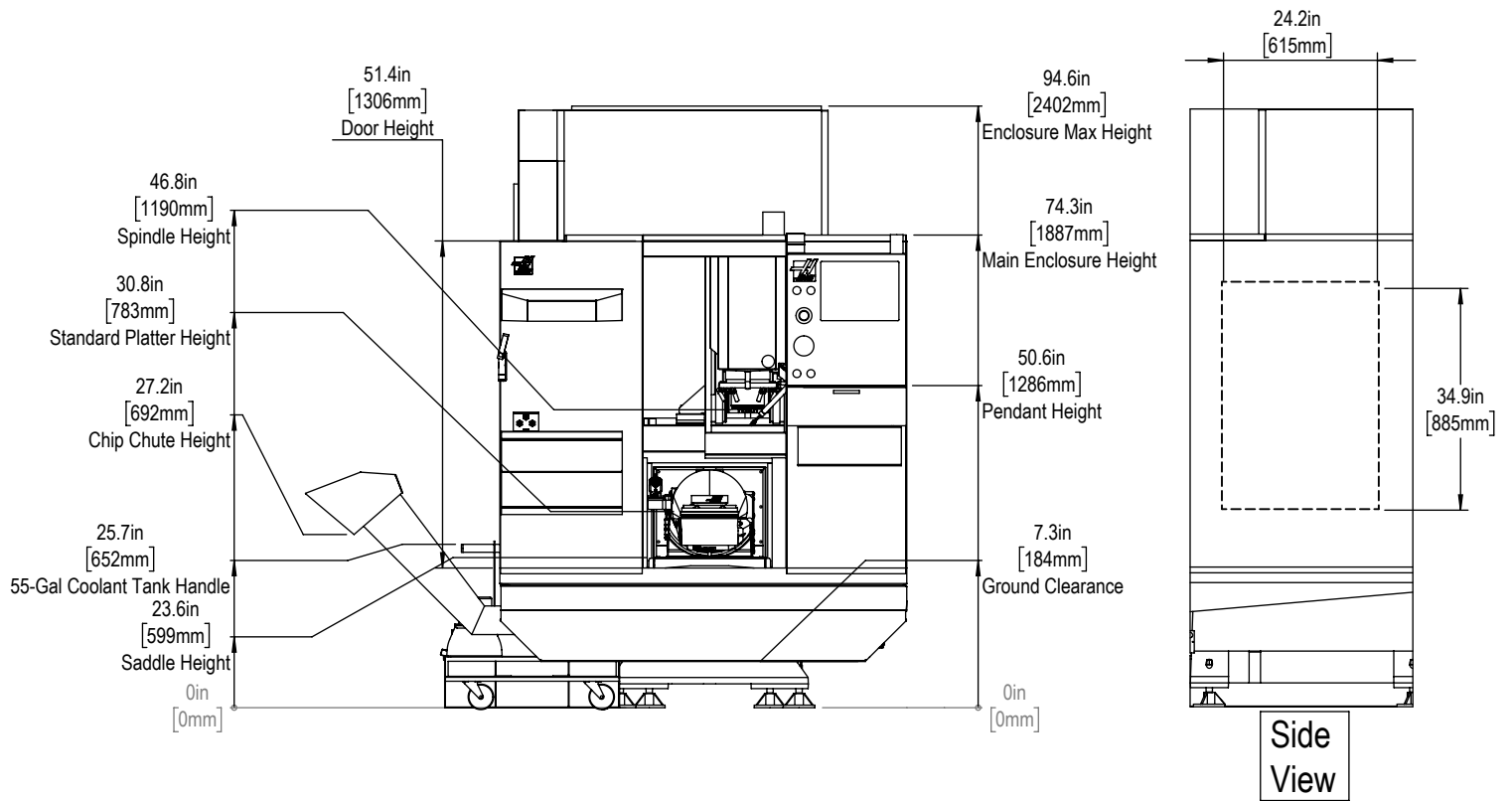
Anchor Pattern



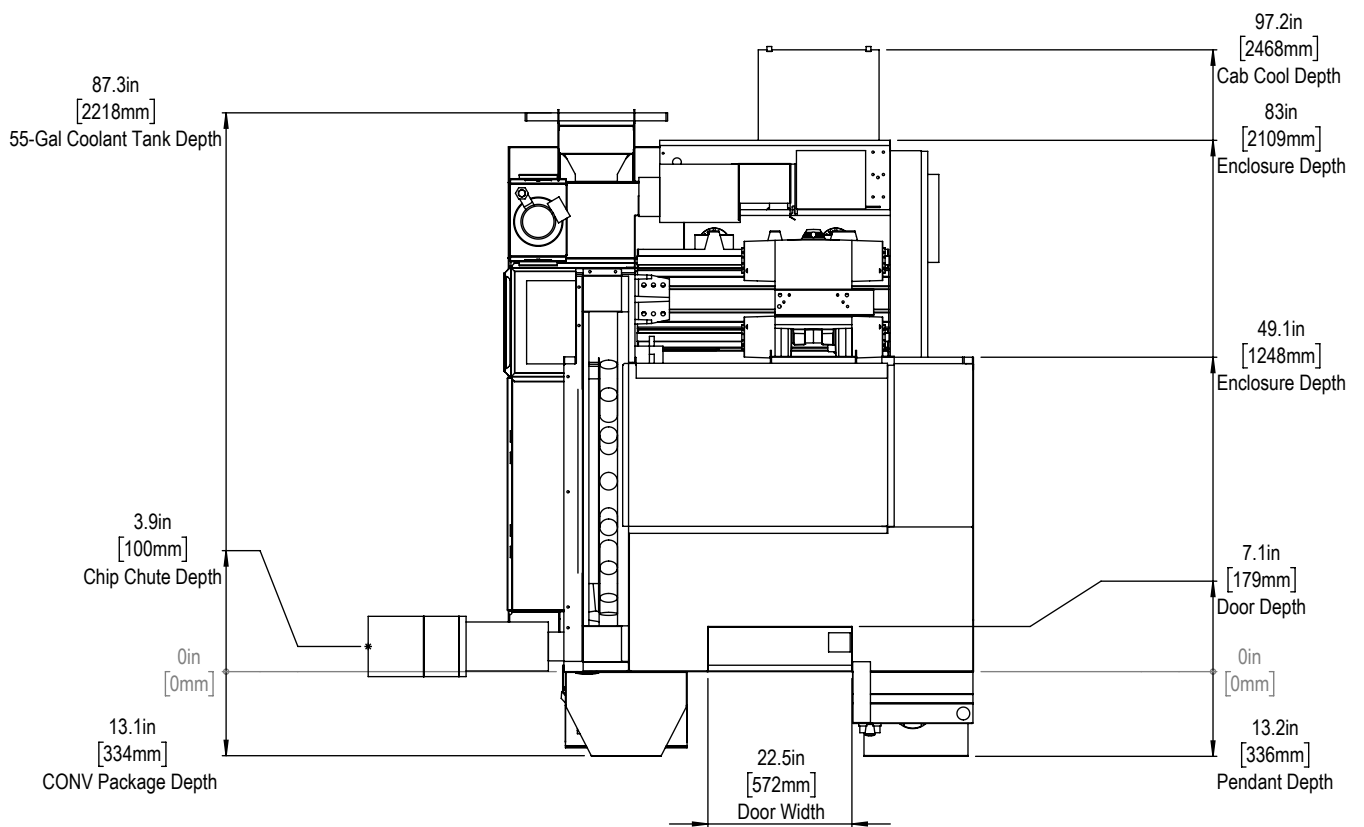
For precise locations and specifications please use template in Anchoring Kit found at Haascnc.com



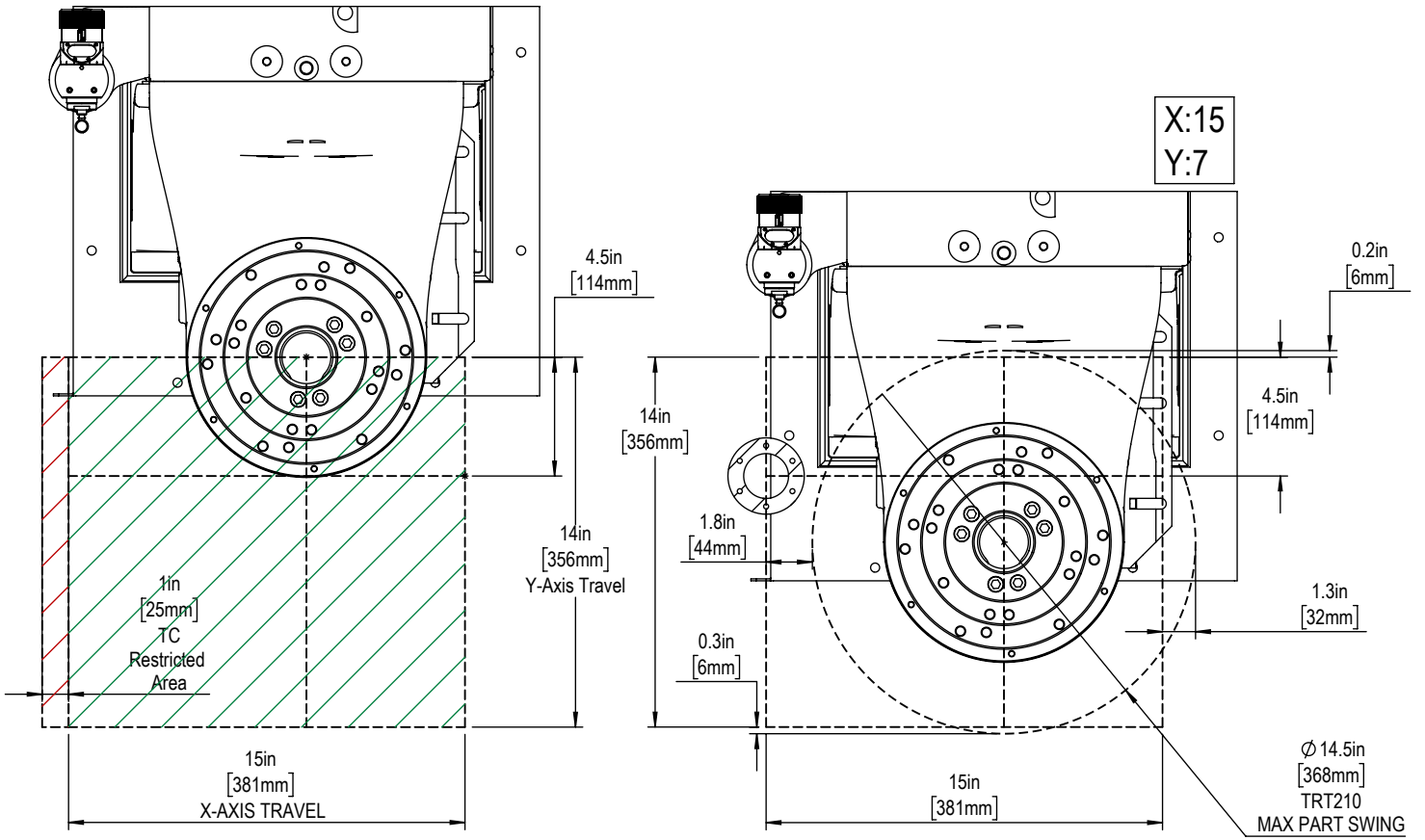
Height Breakdown



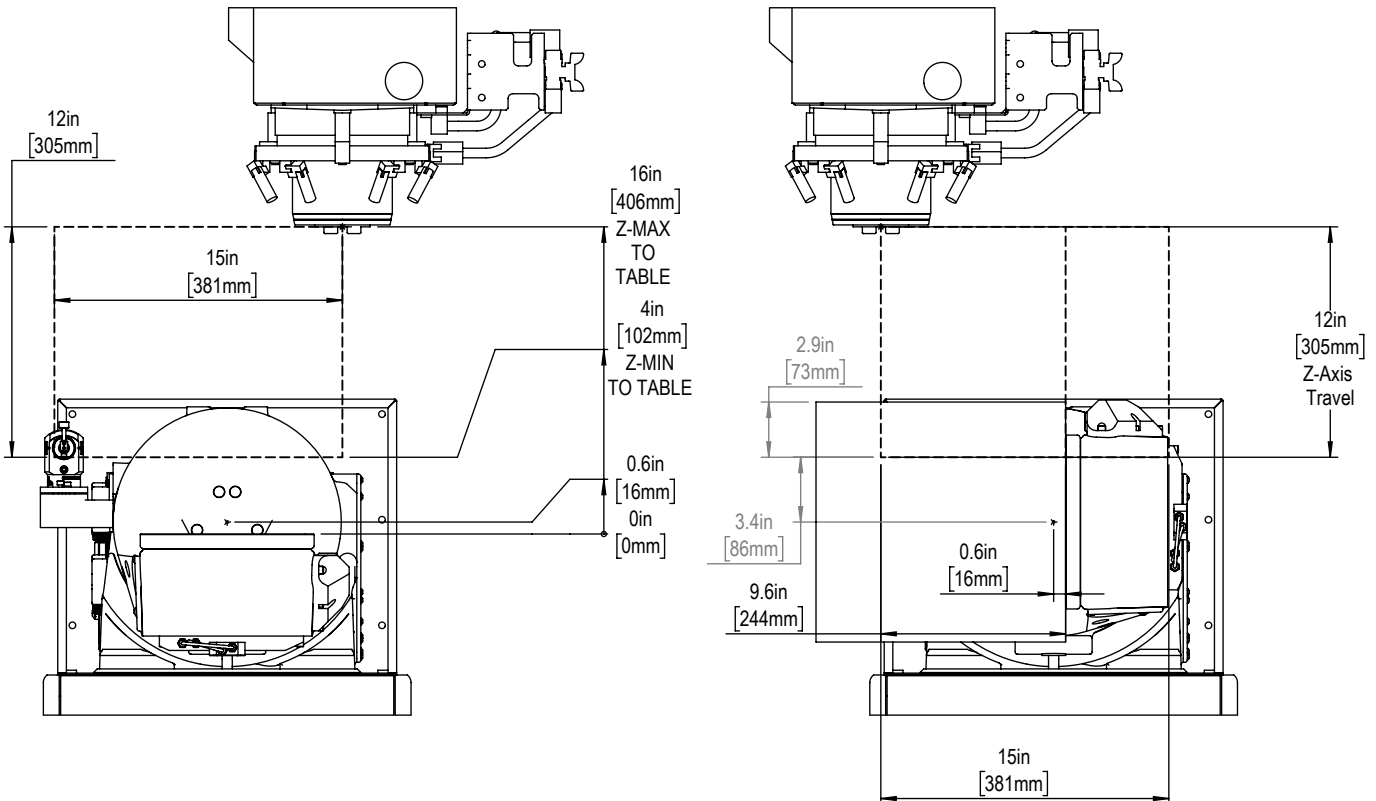
Width Breakdown



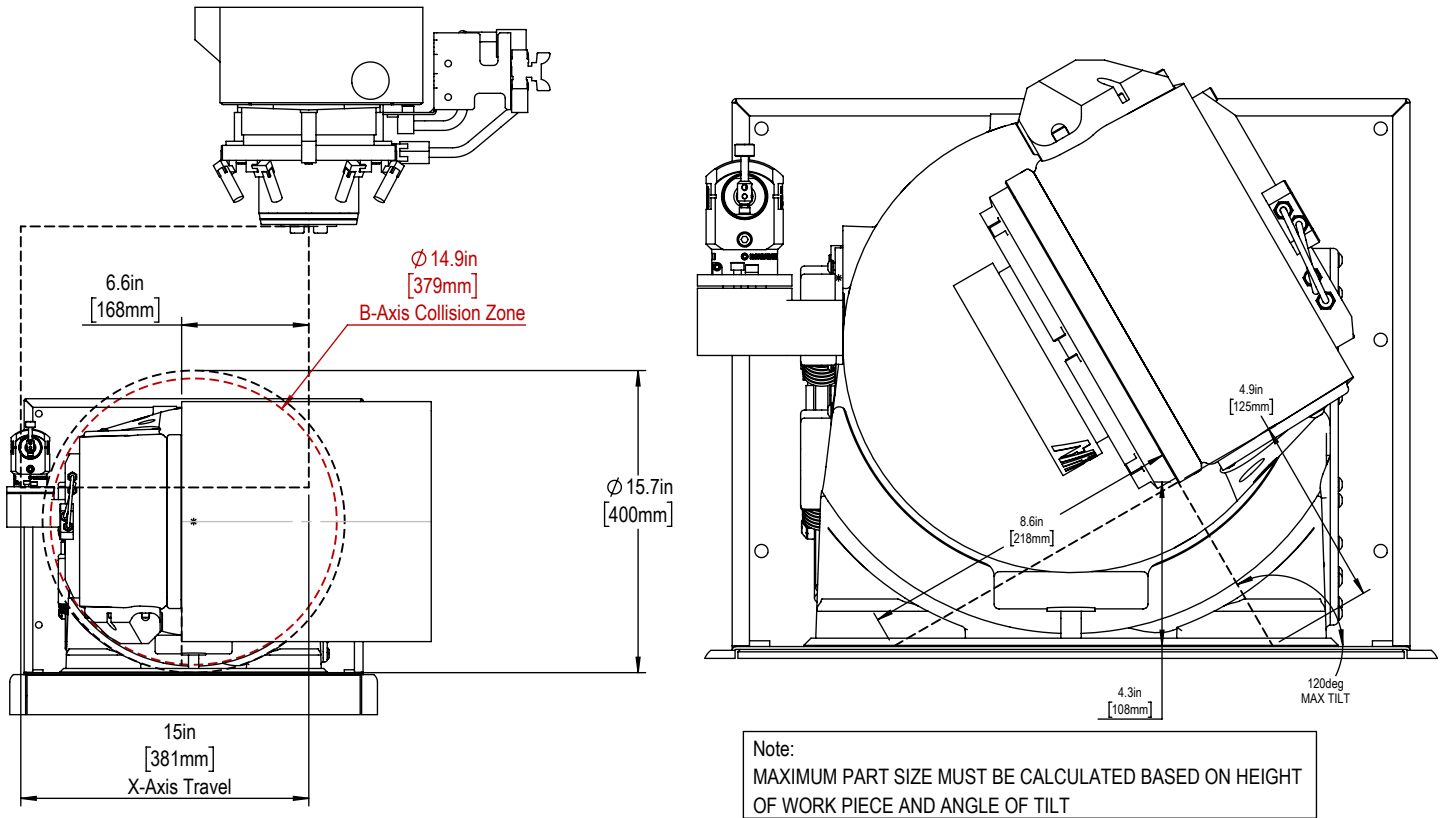
X&Y-Axis Travel and Clearance



Z-Axis Travel and Clearance

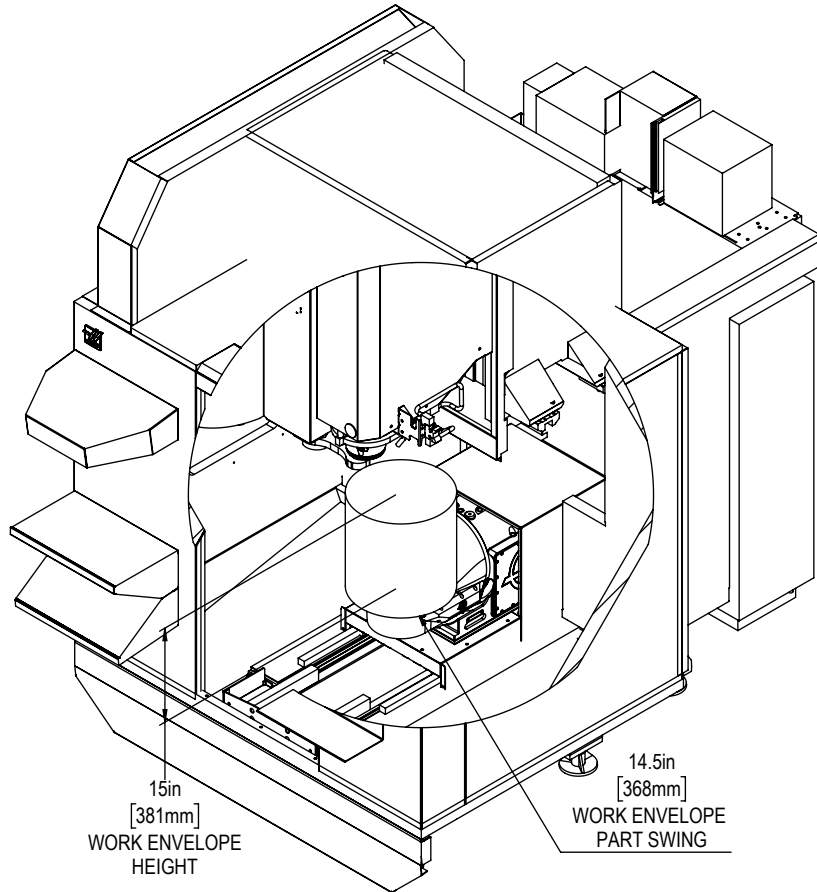


Clearance at B90



Work Envelope

NOTE:
Tool Length + Workpiece Height
May not exceed stated work envelope
For more information on max part
size and weight during 3+2
indexing and 5-axis machining
please see TRT210 specs
and MLD.



Clearance at B120

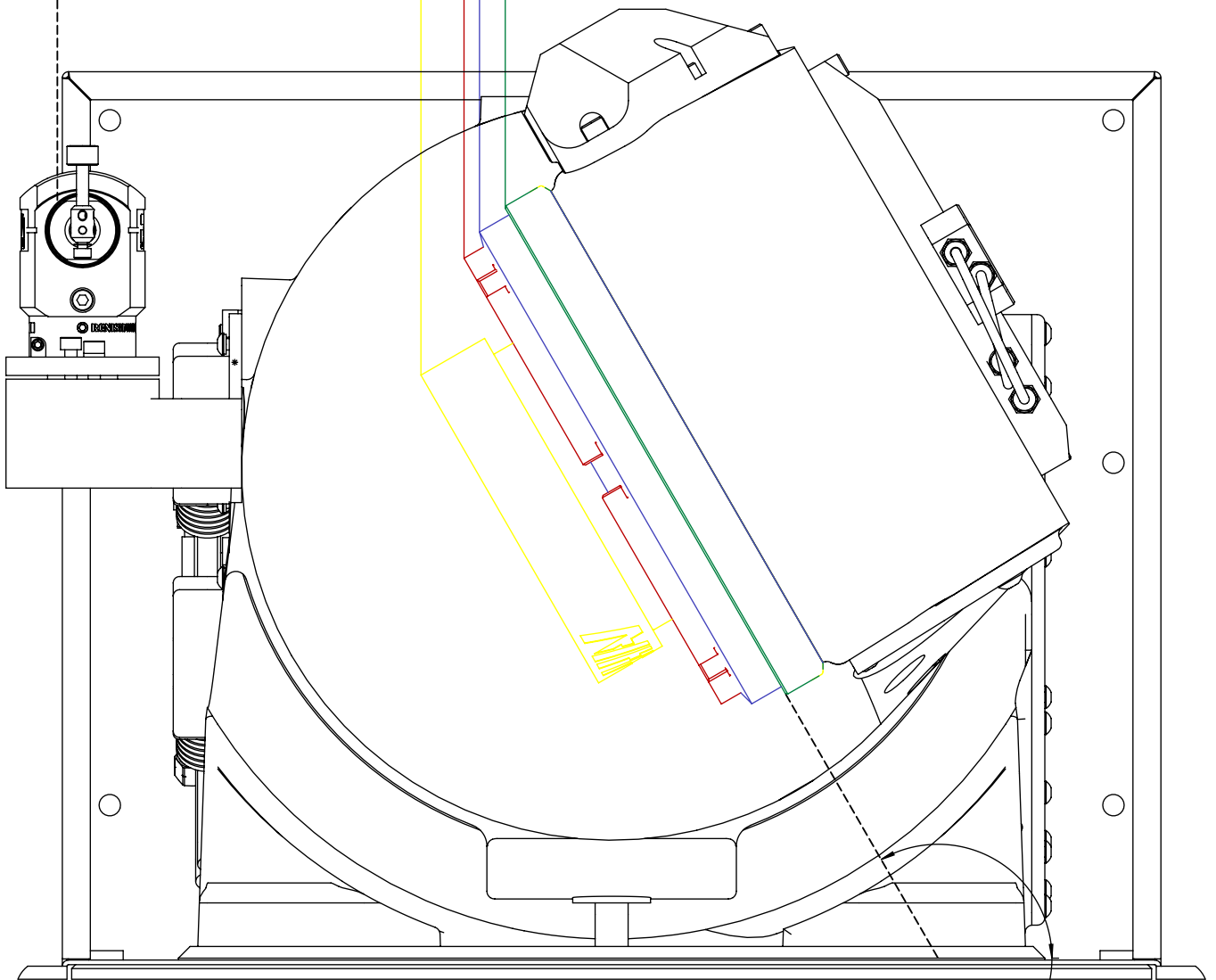
X:15

7.2in
[183mm]
230mm PLATTER

6.8in
[172mm]
A6-1 PLATTER

6.5in
[166mm]
T-SLOT PLATTER

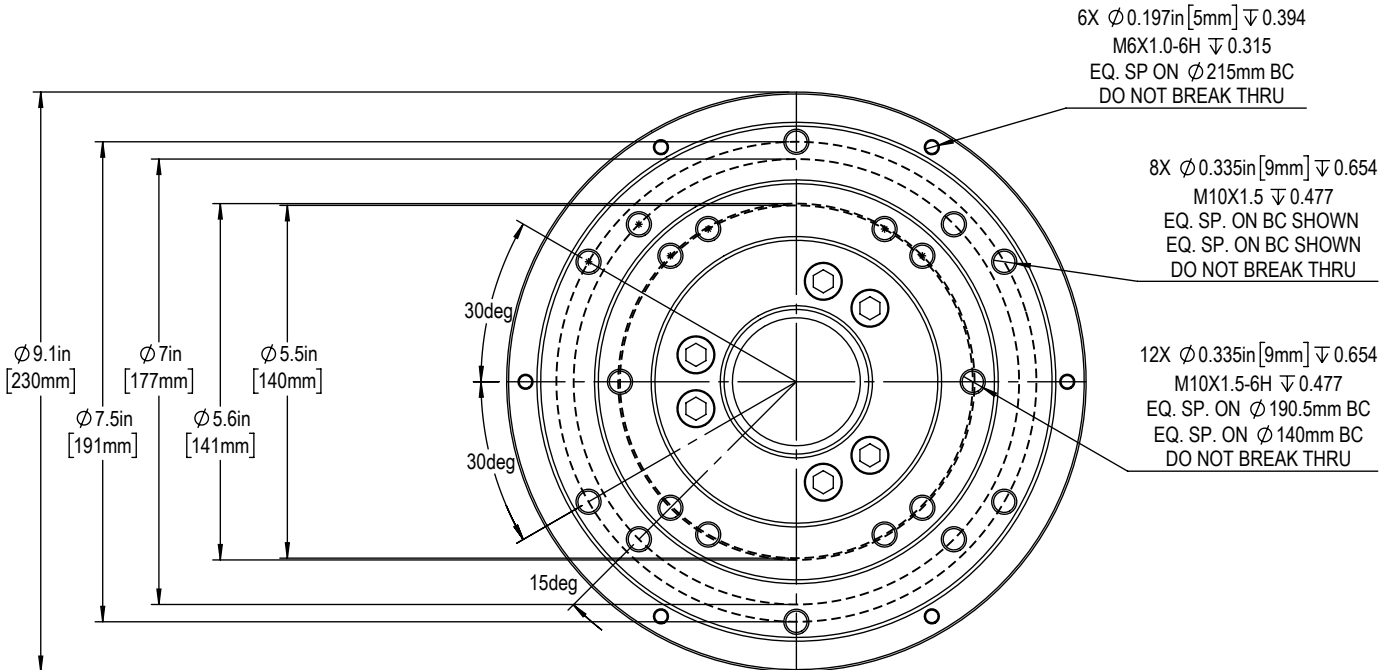
5.8in
[148mm]
ZERO POINT PLATTER



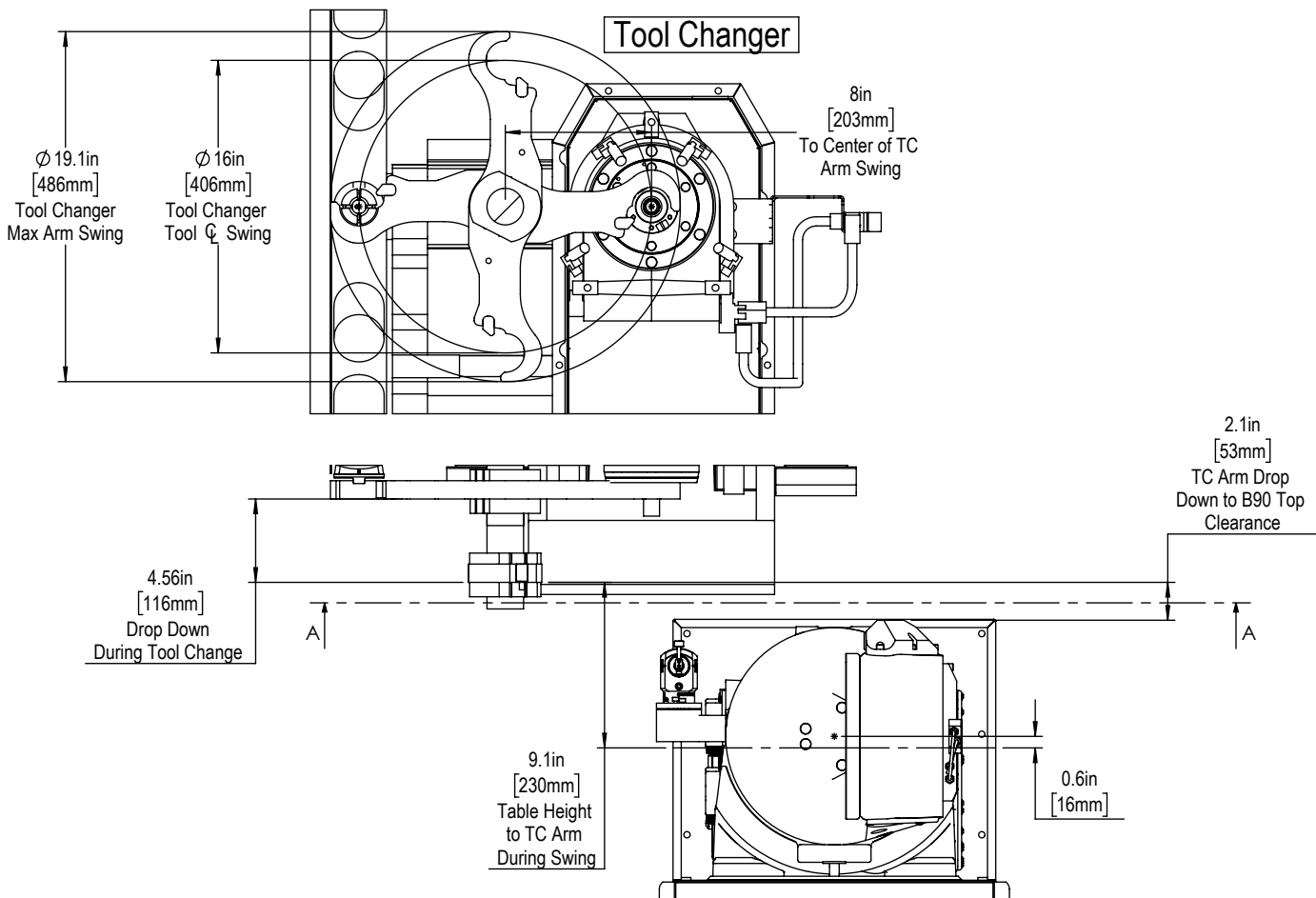
120deg
MAX TILT



Table

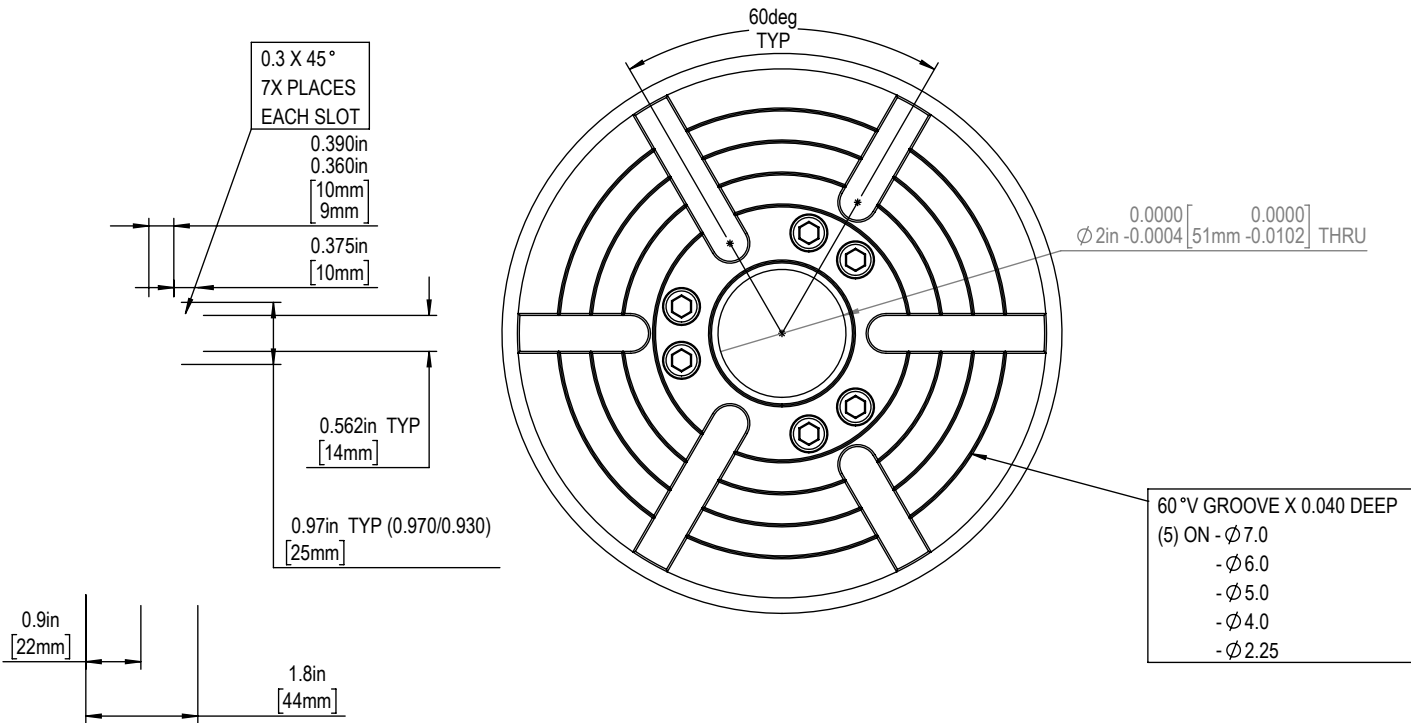


Tool Changer





T-Slot Platter



For Additional Information See TRT-210 Platter Options

A1-6 Platter

